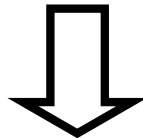


A DIV. OF NORTHERN STAR INDUSTRIES, INC.  
P.O. BOX 788 IRON MOUNTAIN, MICHIGAN 49801

# TAILGATE SPREADER UNIVERSAL HITCH KIT MOUNTING INSTRUCTIONS (PART NO. TGS05900B)

Installation Guidelines.....Pages 2 & 3

**Follow the instructions that correspond to your vehicle.**



1988-1999 CHEVROLET & GMC (CLASSIC).....	Pages 4 & 5
1999 & Newer CHEVROLET & GMC.....	Pages 6 & 7
1971-1993 DODGE RAM.....	Pages 8 & 9
1994-2002 ¾ & 1 TON DODGE RAM.....	Pages 10 & 11
2003 & Newer ¾ & 1 TON DODGE RAM.....	Pages 12 & 13
1973-1997 FORD SUPER DUTY.....	Pages 14 & 15
1998 & Newer FORD SUPER DUTY.....	Pages 16 & 17

BOSS Products / Northern Star Industries, Inc. reserves the right under its continuous product improvement policy to change construction or design details and furnish equipment when so altered without reference to illustrations or specifications used herein.

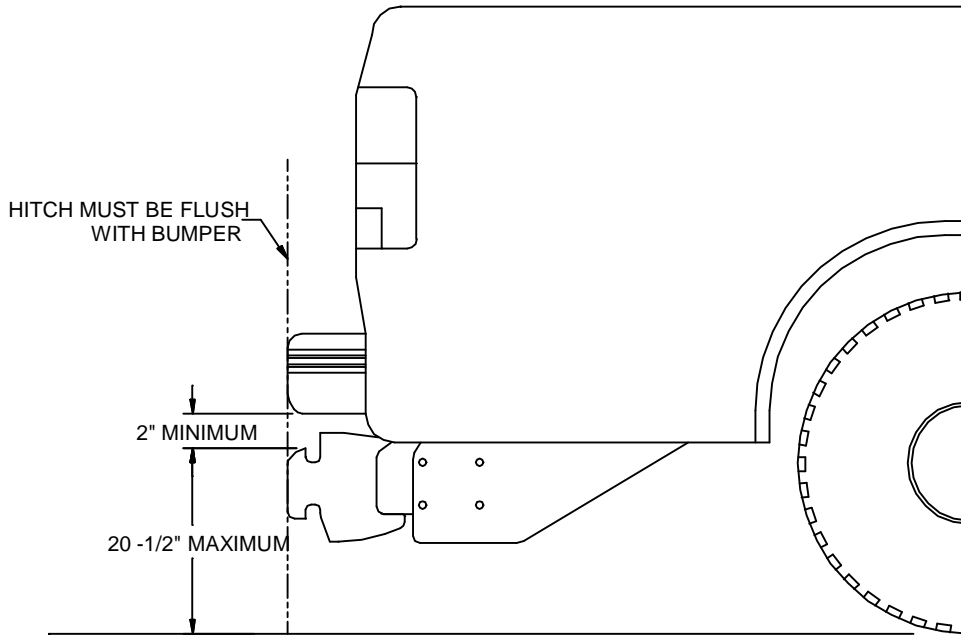
**THROUGH IT ALL**

TGS05912-2

# IMPORTANT

The installation procedures outlined in this manual are based on stock vehicles and may not apply depending on any modifications or special packages that your truck may have. Please follow these instructions as closely as possible, while maintaining the specifications listed in the following figures.

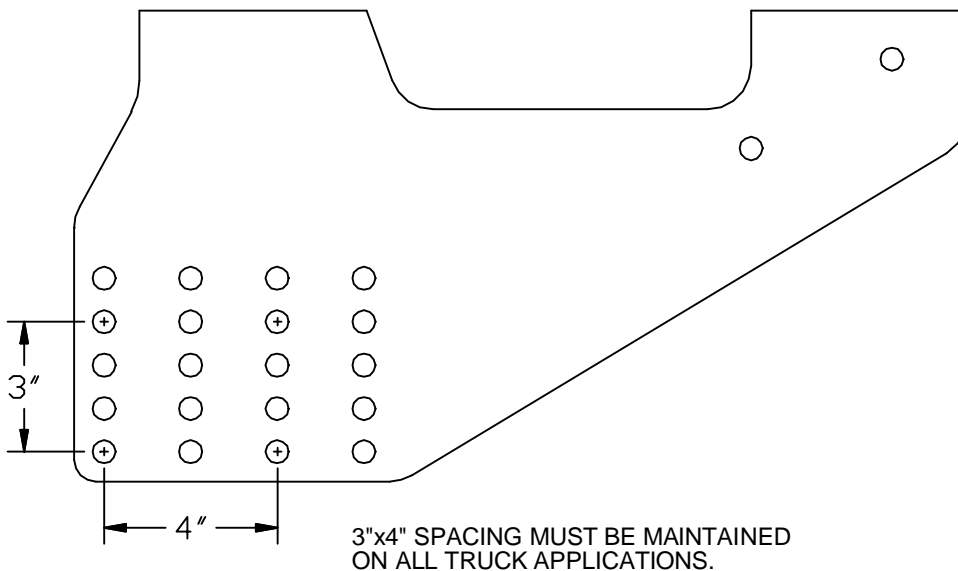
## RECOMMENDED HITCH MOUNTING HEIGHT



Hitch Beam Mounting Height

G10282

## RECOMMENDED BOLT SPACING



Standard Bolt Spacing

G10283

## GUIDE TO RECOMMENDED ASSEMBLY TORQUE

All Torque Values Are In Foot-Pounds (Ft.-Lb.)

DIA./PITCH	CLASS 10.9	GRADE 5	GRADE 8
1/4 - 20		6	9
5/16 - 18		14	19
3/8 - 16		23	33
7/16 - 14		38	53
1/2 - 13		56	80
M12 X 1.75	86		
M14 X 2.00		80	112
9/16 - 12		82	116
5/8 - 11		113	159
3/4 - 10		201	283

\* The torque values listed above are based on dry, coated bolts, variables such as oil, or other lubrications may appreciably alter these values and must be taken into consideration.

**NOTE:** IT IS IMPORTANT THAT ALL FASTENERS BE PROPERLY TORQUED TO ASSURE A SAFE OPERATING TAILGATE SPREADER.

**Torque Value Chart**

**G10284**

### **WARNING**

Never exceed the towing capacity of your hitch or vehicle. The capacity of your Boss hitch is 10,000 pounds towing capacity and 1,000 pounds tongue weight and it is rated Class 4. If any other hitch is installed on the vehicle or if the vehicle's bumper is to be used for towing, refer to the manufacturer for class ratings and weight restrictions.

To comply with Federal Regulations and to assure a safe vehicle, the Front Gross Axle Weight Rating (FGAWR), Rear Gross Axle Weight Rating (RGAWR), and the Gross Vehicle Weight Rating (GAWR) must not be exceeded at any time.

Due to the variety of equipment that can be installed on this vehicle, it is necessary to verify that the Front Gross Axle Weight Rating (FGAWR), Rear Gross Axle Weight Rating (RGAWR), and the Gross Vehicle Weight Rating (GAWR) are not exceeded at any time. This may require weighing the vehicle and adding ballast as necessary. It may also limit payload capacity of the vehicle. It is the operator's responsibility to verify that these ratings are not exceeded.

## **1988-1999 CHEVROLET & GMC (CLASSIC)**

The mounting procedure outlined below covers 1988 to 1999 Chevrolet & GMC (Classic Body Style). You will need to refer to the illustrations and familiarize yourself with each of the undercarriage components.

**Note: It may be necessary to loosen or remove the spare tire to access the frame and hardware. If so, be sure to reinstall and/or retighten it upon completion of undercarriage installation. If the spare tire is not removed, be sure that there is adequate clearance between the hitch and spare tire.**

1. Remove the vehicle's existing trailer hitch (if applicable).
2. Remove existing 12mm hex head bolts from the rear of the frame rails. On some vehicles the passenger side may have an 8mm bolt. If so, remove this bolt and re-install it with the head on the bottom of the frame.
3. If your vehicle has rivets on the bottom of the frame, you will need to install one 3/8" Shim (D) between the frame and the bracket at each bolting location as shown in Figure G10275. **DO NOT BOLT BRACKETS DIRECTLY AGAINST RIVETS.** If the bottom of the frame is free from obstructions, omit 3/8" Shims (D).
4. Assemble the rear slot in Support Plate Assembly (A) to the passenger side frame rail with one M12 - 1.75 X 80MM Hex Head Bolt (3), one 1/2" Split Lock Washer (9), and one 1/2" Hardened Flat Washer (8). Assemble the front slot using one 5/8"-11 X 2" Hex Head Bolt (1), one 5/8" Hardened Flat Washer (7), one 5/8" - 11 Hex Head Nylon Lock Nut (5), and one 1/4" Shim (E). It may be necessary to drill out the frame hole for 5/8" hardware. **DO NOT TIGHTEN HARDWARE.**

**Note: If installing the hitch on a SHORT BED truck, use SLOT 2 (rear) and SLOT 4 (front). For LONG BED trucks, use SLOT 1 (rear) & SLOT 3 (front). See Figure G10275. The front hole in the frame may need to be drilled out for 5/8" bolt.**

5. Repeat Step 3 for Support Plate Assembly (B) on the driver side frame rail.
6. Assemble Hitch Beam Assembly (C) between Support Plate Assemblies (A & B) using eight 1/2" - 13 X 1-1/2" Hex Head Bolts (4), and eight 1/2" - 13 Hex Head Nylon Lock Nuts (6). For this application, Hitch Beam Assembly (C) should be installed to the rear-most row of holes in Support Plate Assemblies (A & B). See Figure G10275.

**Note: It is critical that Hitch Beam Assembly (C) be installed in the correct position to avoid interference or installation problems with the Tailgate Spreader. See Figure G10282 at the beginning of this manual for correct horizontal and vertical mounting positions.**

7. Tighten fasteners in the following order: First tighten 1/2" - 13 X 1-1/2" Hex Head Bolts (4) and 1/2" - 13 Hex Head Nylon Lock Nuts (6) connecting Hitch Beam Assembly (C) to Support Plate Assemblies (A & B). Second, tighten all hardware connecting Support Plate Assemblies (A & B) to the frame rails.

**Note: It is important that all fasteners be properly torqued (see Figure G10284 at the beginning of this manual) to assure a safe operating Trailer Hitch and Tailgate Spreader.**

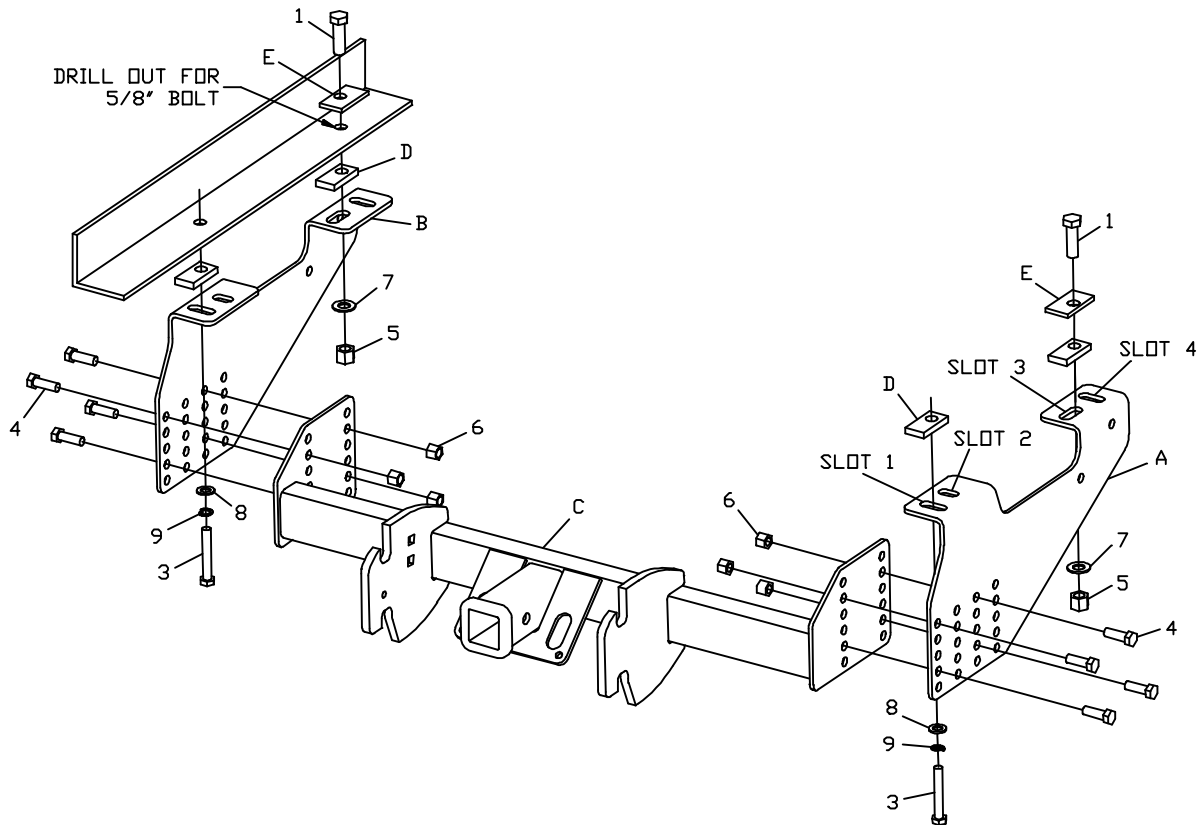
## 1988-1999 CHEVROLET & GMC (CLASSIC)

REF. NO.	DESCRIPTION	PART NO.	QTY.
A	Support Plate Assembly A	TGS05908	1
B	Support Plate Assembly B	TGS05910	1
C	Hitch Beam Assembly	TGS05930	1
D	3/8" Shim, 11/16" Dia. Hole	TGS05918	8
E	1/4" Shim, 11/16" Dia. Hole	TGS05919	4

### FASTENER KIT

Includes:

1	5/8" - 11 X 2" Hex Head Bolt	HDW01731	4
2	5/8" - 11 X 2-1/2" Hex Head Bolt	HDW05915	4
3	M12 - 1.75 X 80MM, Hex Head Bolt	HDW05916	2
4	1/2" - 13 X 1-1/2" Hex Head Bolt	HDW01728	8
5	5/8" - 11 Hex Head Nylon Lock Nut	HDW05619	4
6	1/2" - 13 Hex Head Nylon Lock Nut	HDW01748	12
7	5/8" Hardened Flat Washer	HDW01726	8
8	1/2" Hardened Flat Washer	HDW01729	2
9	1/2" Split Lock Washer	HDW01732	2
10	5/8"-11 Regular Lock Nut	HDW03891	4
11	5/8" Split Lock Washer	HDW01777	4



## **1999 & Newer CHEVROLET & GMC**

The mounting procedure outlined below covers 1999 & Newer Chevrolet & GMC. You will need to refer to the illustrations and familiarize yourself with each of the undercarriage components.

**Note: It may be necessary to loosen or remove the spare tire to access the frame and hardware. If so, be sure to reinstall and/or retighten it upon completion of undercarriage installation. If the spare tire is not removed, be sure that there is adequate clearance between the hitch and spare tire.**

1. Remove the vehicle's existing trailer hitch (if applicable).
2. Remove existing 14mm hex head bolts from the bottom/rear of the frame rails.
3. Assemble the rear slot in Support Plate Assembly (A) to the driver side frame rail using the existing 14mm bolt removed in Step 1 and one 5/8" Hardened Flat Washer (7). Assemble the front slot using one 5/8"-11 X 2" Hex Head Bolt (1), one 5/8" Hardened Flat Washer (7), one 5/8" - 11 Hex Head Nylon Lock Nut (5), and one 1/4" Shim (E). **DO NOT TIGHTEN HARDWARE.**
4. Repeat Step 3 for Support Plate Assembly (B) on the passenger side frame rail.
5. Assemble Hitch Beam Assembly (C) between Support Plate Assemblies (A & B) using eight 1/2" - 13 X 1-1/2" Hex Head Bolts (4), and eight 1/2" - 13 Hex Head Nylon Lock Nuts (6). For this application, Hitch Beam Assembly (C) should be installed to the forward-most row of holes in Support Plate Assemblies (A & B). See Figure G10276.

**Note: It is critical that Hitch Beam Assembly (C) be installed in the correct position to avoid interference or installation problems with the Tailgate Spreader. See Figure G10282 at the beginning of this manual for correct horizontal and vertical mounting positions.**

6. Tighten fasteners in the following order: First tighten 1/2" - 13 X 1-1/2" Hex Head Bolts (4) and 1/2" - 13 Hex Head Nylon Lock Nuts (6) connecting Hitch Beam Assembly (C) to Support Plate Assemblies (A & B). Second, tighten all hardware connecting Support Plate Assemblies (A & B) to the frame rails.

**Note: It is important that all fasteners be properly torqued (see Figure G10284 at the beginning of this manual) to assure a safe operating Trailer Hitch and Tailgate Spreader.**

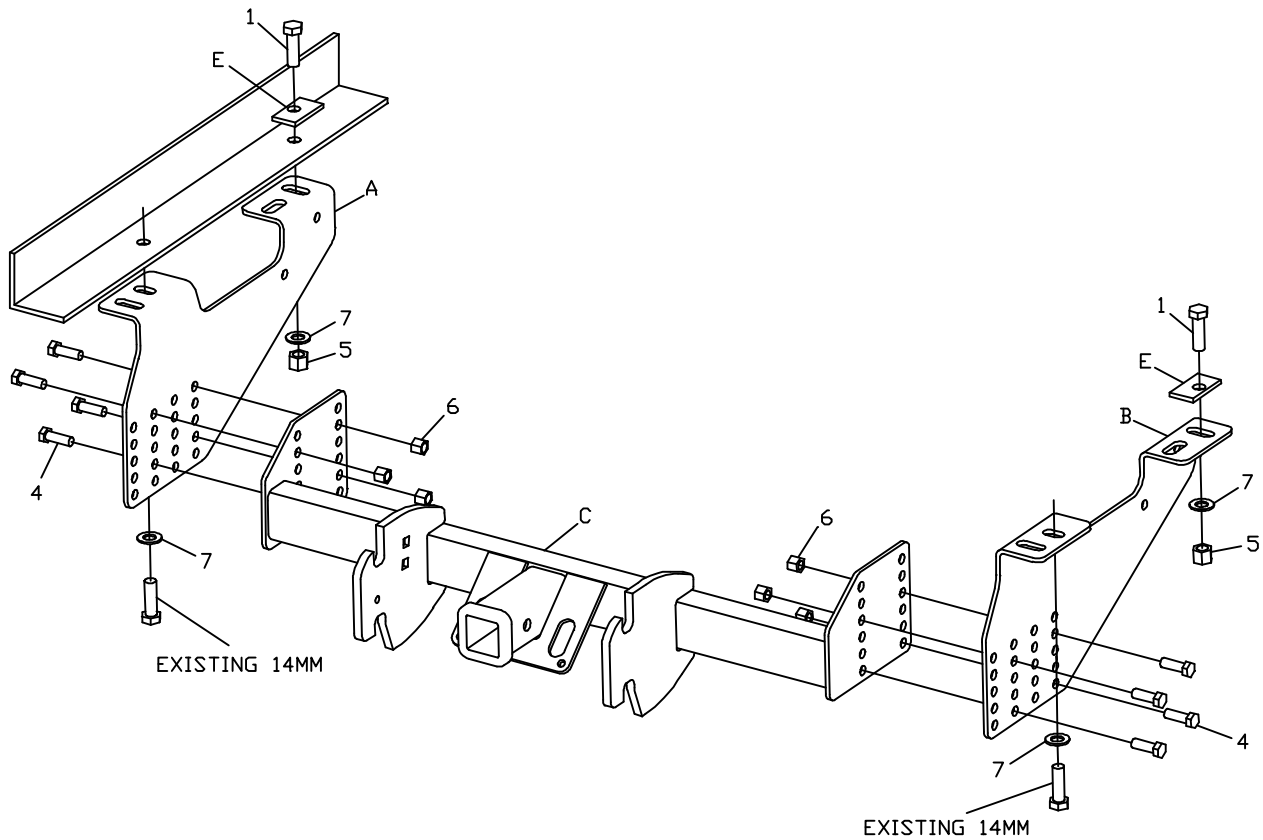
## 1999 & Newer CHEVROLET & GMC

REF. NO.	DESCRIPTION	PART NO.	QTY.
A	Support Plate Assembly A	TGS05908	1
B	Support Plate Assembly B	TGS05910	1
C	Hitch Beam Assembly	TGS05930	1
D	3/8" Shim, 11/16" Dia. Hole	TGS05918	8
E	1/4" Shim, 11/16" Dia. Hole	TGS05919	4

### FASTENER KIT

Includes:

1	5/8" - 11 X 2" Hex Head Bolt	HDW01731	4
2	5/8" - 11 X 2-1/2" Hex Head Bolt	HDW05915	4
3	M12 - 1.75 X 80MM, Hex Head Bolt	HDW05916	2
4	1/2" - 13 X 1-1/2" Hex Head Bolt	HDW01728	8
5	5/8" - 11 Hex Head Nylon Lock Nut	HDW05619	4
6	1/2" - 13 Hex Head Nylon Lock Nut	HDW01748	12
7	5/8" Hardened Flat Washer	HDW01726	8
8	1/2" Hardened Flat Washer	HDW01729	2
9	1/2" Split Lock Washer	HDW01732	2
10	5/8"-11 Regular Hex Nut	HDW03891	4
11	5/8" Split Lock Washer	HDW01777	4



## 1971-1993 DODGE RAM

The mounting procedure outlined below covers 1971-1993 Dodge Ram. You will need to refer to the illustrations and familiarize yourself with each of the undercarriage components.

**Note: It may be necessary to loosen or remove the spare tire to access the frame and hardware. If so, be sure to reinstall and/or retighten it upon completion of undercarriage installation. If the spare tire is not removed, be sure that there is adequate clearance between the hitch and spare tire.**

1. Remove the vehicle's existing trailer hitch (if applicable).
2. If your vehicle has rivets on the bottom of the frame, you will need to install one 3/8" Shim (D) between the frame and the bracket at each bolting location as shown in Figure G10277. DO NOT BOLT BRACKETS DIRECTLY AGAINST RIVETS. If the bottom of the frame is free from obstructions, omit 3/8" Shims (D).
3. Assemble the rear slot in Support Plate Assembly (A) to the passenger side frame rail with one 5/8"-11 X 2" Hex Head Bolt (1), one 5/8" Hardened Flat Washer (7), one 5/8" - 11 Hex Head Nylon Lock Nut (5), and one 1/4" Shim (E). Drill a hole for 5/8" hardware in the frame for the front slot in Support Plate Assembly (A). Assemble the front slot using one 5/8"-11 X 2" Hex Head Bolt (1), one 5/8" Hardened Flat Washer (7), one 5/8" - 11 Hex Head Nylon Lock Nut (5), and one 1/4" Shim (E). DO NOT TIGHTEN HARDWARE.
4. Repeat Step 3 for Support Plate Assembly (B) on the driver side frame rail.
5. Assemble Hitch Beam Assembly (C) between Support Plate Assemblies (A & B) using eight 1/2" - 13 X 1-1/2" Hex Head Bolts (4), and eight 1/2" - 13 Hex Head Nylon Lock Nuts (6). For this application, Hitch Beam Assembly (C) should be installed to the rear-most row of holes in Support Plate Assemblies (A & B). See Figure G10277.

**Note: It is critical that Hitch Beam Assembly (C) be installed in the correct position to avoid interference or installation problems with the Tailgate Spreader. See Figure G10282 at the beginning of this manual for correct horizontal and vertical mounting positions.**

6. Tighten fasteners in the following order: First tighten 1/2" - 13 X 1-1/2" Hex Head Bolts (4) and 1/2" - 13 Hex Head Nylon Lock Nuts (6) connecting Hitch Beam Assembly (C) to Support Plate Assemblies (A & B). Second, tighten all hardware connecting Support Plate Assemblies (A & B) to the frame rails.

**Note: It is important that all fasteners be properly torqued (see Figure G10284 at the beginning of this manual) to assure a safe operating Trailer Hitch and Tailgate Spreader.**



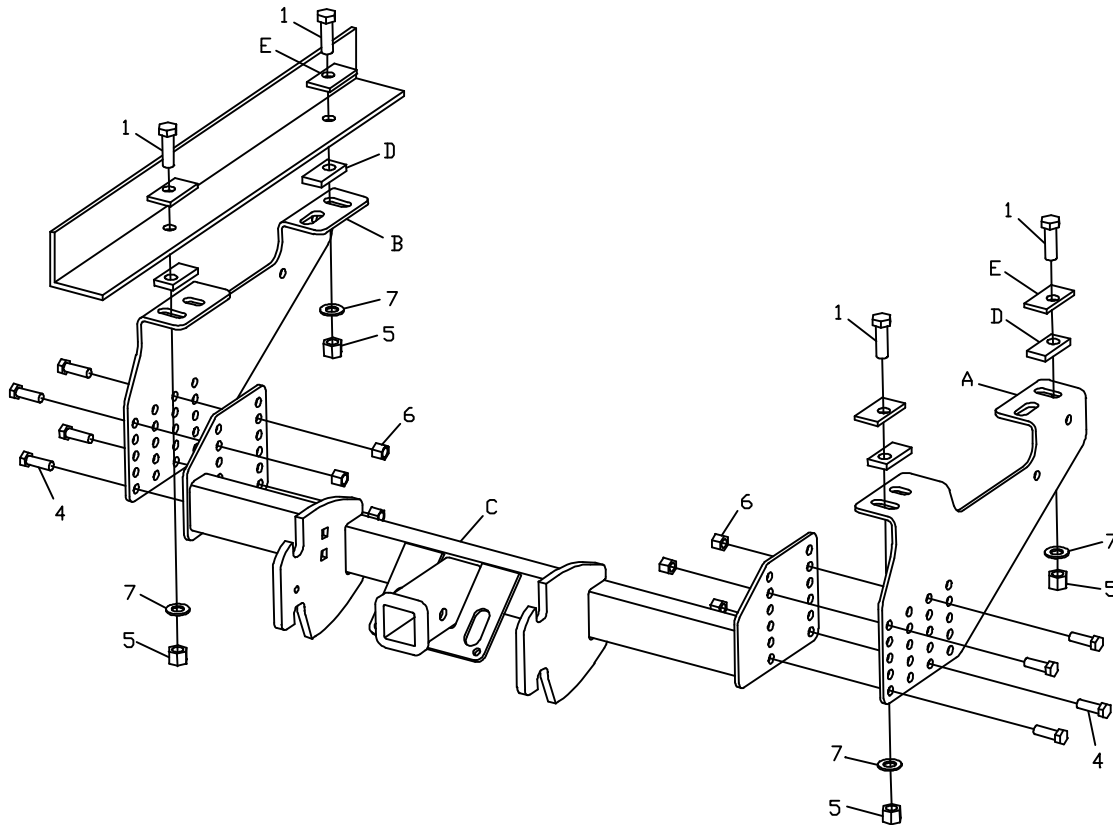
## 1971-1993 DODGE RAM

REF. NO.	DESCRIPTION	PART NO.	QTY.
A	Support Plate Assembly A	TGS05908	1
B	Support Plate Assembly B	TGS05910	1
C	Hitch Beam Assembly	TGS05930	1
D	3/8" Shim, 11/16" Dia. Hole	TGS05918	8
E	1/4" Shim, 11/16" Dia. Hole	TGS05919	4

### FASTENER KIT

Includes:

1	5/8" - 11 X 2" Hex Head Bolt	HDW01731	4
2	5/8" - 11 X 2-1/2" Hex Head Bolt	HDW05915	4
3	M12 - 1.75 X 80MM, Hex Head Bolt	HDW05916	2
4	1/2" - 13 X 1-1/2" Hex Head Bolt	HDW01728	8
5	5/8" - 11 Hex Head Nylon Lock Nut	HDW05619	4
6	1/2" - 13 Hex Head Nylon Lock Nut	HDW01748	12
7	5/8" Hardened Flat Washer	HDW01726	8
8	1/2" Hardened Flat Washer	HDW01729	2
9	1/2" Split Lock Washer	HDW01732	2
10	5/8"-11 Regular Hex Nut	HDW03891	4
11	5/8" Split Lock Washer	HDW01777	4



## **1994-2002 ¾ & 1 Ton DODGE RAM**

The mounting procedure outlined below covers 1994-2002 ¾ & 1 Ton Dodge Ram. You will need to refer to the illustrations and familiarize yourself with each of the undercarriage components.

**Note: It may be necessary to loosen or remove the spare tire to access the frame and hardware. If so, be sure to reinstall and/or retighten it upon completion of undercarriage installation. If the spare tire is not removed, be sure that there is adequate clearance between the hitch and spare tire.**

**Note: On some vehicles, the exhaust hanger will need to be unbolted from the frame. If so, reassemble the exhaust hanger to one of the forward-most holes in Support Plate Assembly (A or B).**

1. Remove the vehicle's existing trailer hitch (if applicable).
2. Assemble the rear slot in Support Plate Assembly (A) to the passenger side frame rail with one 5/8"-11 X 2-1/2" Hex Head Bolt (2), one 5/8" Hardened Flat Washer (7), one 5/8" - 11 Hex Head Nylon Lock Nut (5), two 3/8" Shims (D), and one ¼" Shim (E). Assemble the front slot using one 5/8"-11 X 2-1/2" Hex Head Bolt (2), one 5/8" Hardened Flat Washer (7), one 5/8" - 11 Hex Head Nylon Lock Nut (5), two 3/8" Shims (D), and one ¼" Shim (E). DO NOT TIGHTEN HARDWARE.

**Note: On some vehicles, the front slot in Support Plate Assembly (A) may not line up with the existing hole in the frame. If this is the case, drill a hole in the frame for 5/8" hardware.**

3. Repeat Step 3 for Support Plate Assembly (B) on the driver side frame rail.
4. Assemble the Hitch Beam Assembly (C) between Support Plate Assemblies (A & B) using eight 1/2" - 13 X 1-1/2" Hex Head Bolts (4), and eight 1/2" - 13 Hex Head Nylon Lock Nuts (6). For this application, Hitch Beam Assembly (C) should be installed to the forward-most row of holes in Support Plate Assemblies (A & B). See Figure G10278.

**Note: It is critical that Hitch Beam Assembly (C) be installed in the correct position to avoid interference or installation problems with the Tailgate Spreader. See Figure G10282 at the beginning of this manual for correct horizontal and vertical mounting positions.**

5. Tighten fasteners in the following order: First tighten 1/2" - 13 X 1-1/2" Hex Head Bolts (4) and 1/2" - 13 Hex Head Nylon Lock Nuts (6) connecting Hitch Beam Assembly (C) to Support Plate Assemblies (A & B). Second, tighten all hardware connecting Support Plate Assemblies (A & B) to the frame rails.

**Note: It is important that all fasteners be properly torqued (see Figure G10284 at the beginning of this manual) to assure a safe operating Trailer Hitch and Tailgate Spreader.**

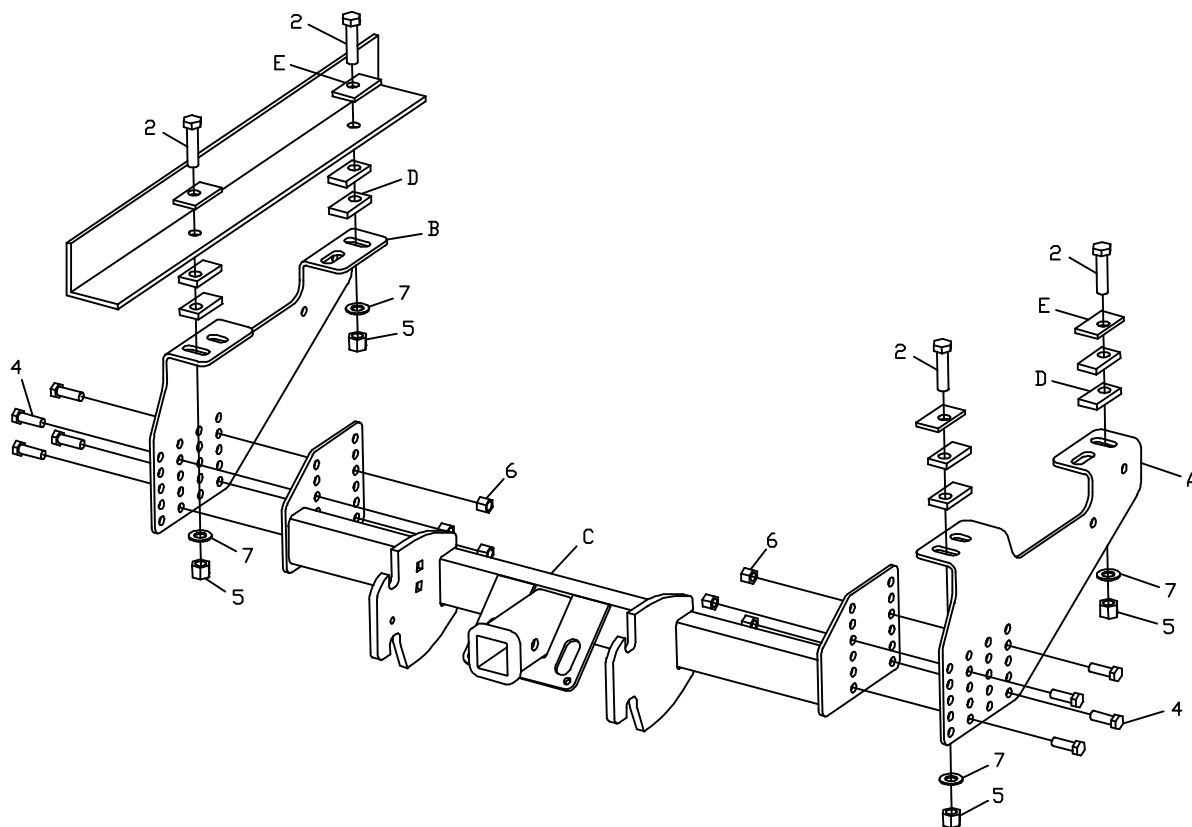
## 1994-2002 ¾ & 1 Ton DODGE RAM

REF. NO.	DESCRIPTION	PART NO.	QTY.
A	Support Plate Assembly A	TGS05908	1
B	Support Plate Assembly B	TGS05910	1
C	Hitch Beam Assembly	TGS05930	1
D	3/8" Shim, 11/16" Dia. Hole	TGS05918	8
E	1/4" Shim, 11/16" Dia. Hole	TGS05919	4

### FASTENER KIT

Includes:

1	5/8" - 11 X 2" Hex Head Bolt	HDW01731	4
2	5/8" - 11 X 2-1/2" Hex Head Bolt	HDW05915	4
3	M12 - 1.75 X 80MM, Hex Head Bolt	HDW05916	2
4	1/2" - 13 X 1-1/2" Hex Head Bolt	HDW01728	8
5	5/8" - 11 Hex Head Nylon Lock Nut	HDW05619	4
6	1/2" - 13 Hex Head Nylon Lock Nut	HDW01748	12
7	5/8" Hardened Flat Washer	HDW01726	8
8	1/2" Hardened Flat Washer	HDW01729	2
9	1/2" Split Lock Washer	HDW01732	2
10	5/8"-11 Regular Hex Nut	HDW03891	4
11	5/8" Split Lock Washer	HDW01777	4



## **2003 & Newer ¾ & 1 TON DODGE RAM**

The mounting procedure outlined below covers 2003 & Newer ¾ & 1 Ton Dodge Ram. You will need to refer to the illustrations and familiarize yourself with each of the undercarriage components.

**Note: It may be necessary to loosen or remove the spare tire to access the frame and hardware. If so, be sure to reinstall and/or retighten it upon completion of undercarriage installation. If the spare tire is not removed, be sure that there is adequate clearance between the hitch and spare tire.**

1. DO NOT remove the vehicle's existing trailer hitch (if applicable).
2. Install one 3/8" Shim (D) and one 5/8"-11 X 2" Hex Head Bolt (1) into the forward-most large hole in the bottom of each frame rail. You will need to insert the bolt into the shim first and then slide them both into the hole from the bottom. 5/8"-11 X 2" Hex Head Bolt (1) should hang down through the frame hole when complete. Repeat this process for the rear-most large hole in the frame.
3. Assemble the front slot in Support Plate Assembly (A) to the driver side bolt from Step 2 using one 5/8" Hardened Flat Washer (7), one 5/8" Split Lock Washer (11), and one 5/8" - 11 Regular Hex Nut (10). Repeat the process for the rear slot in Support Plate Assembly (A). DO NOT TIGHTEN HARDWARE.

**Note: It may be necessary to loosen some of the hardware between the OEM hitch sideplates and the bumper support brackets prior to assembling Support Plate Assemblies (A & B).**

4. Repeat Step 3 for Support Plate Assembly (B) on the passenger side frame rail.
5. Assemble Hitch Beam Assembly (C) between Support Plate Assemblies (A & B) using eight 1/2" - 13 X 1-1/2" Hex Head Bolts (4), and eight 1/2" - 13 Hex Head Nylon Lock Nuts (6). For this application, Hitch Beam Assembly (C) should be installed to the rear-most row of holes in Support Plate Assemblies (A & B). See Figure G10279.

**Note: It is critical that Hitch Beam Assembly (C) be installed in the correct position to avoid interference or installation problems with the Tailgate Spreader. See Figure G10282 at the beginning of this manual for correct horizontal and vertical mounting positions. For vehicles with an OEM hitch, the receiver tubes on the hitches should be as close together as possible.**

6. Tighten fasteners in the following order: First tighten 1/2" - 13 X 1-1/2" Hex Head Bolts (4) and 1/2" - 13 Hex Head Nylon Lock Nuts (6) connecting Hitch Beam Assembly (C) to Support Plate Assemblies (A & B). Second, tighten all hardware connecting Support Plate Assemblies (A & B) to the frame rails.

**Note: It is important that all fasteners be properly torqued (see Figure G10284 at the beginning of this manual) to assure a safe operating Trailer Hitch and Tailgate Spreader.**

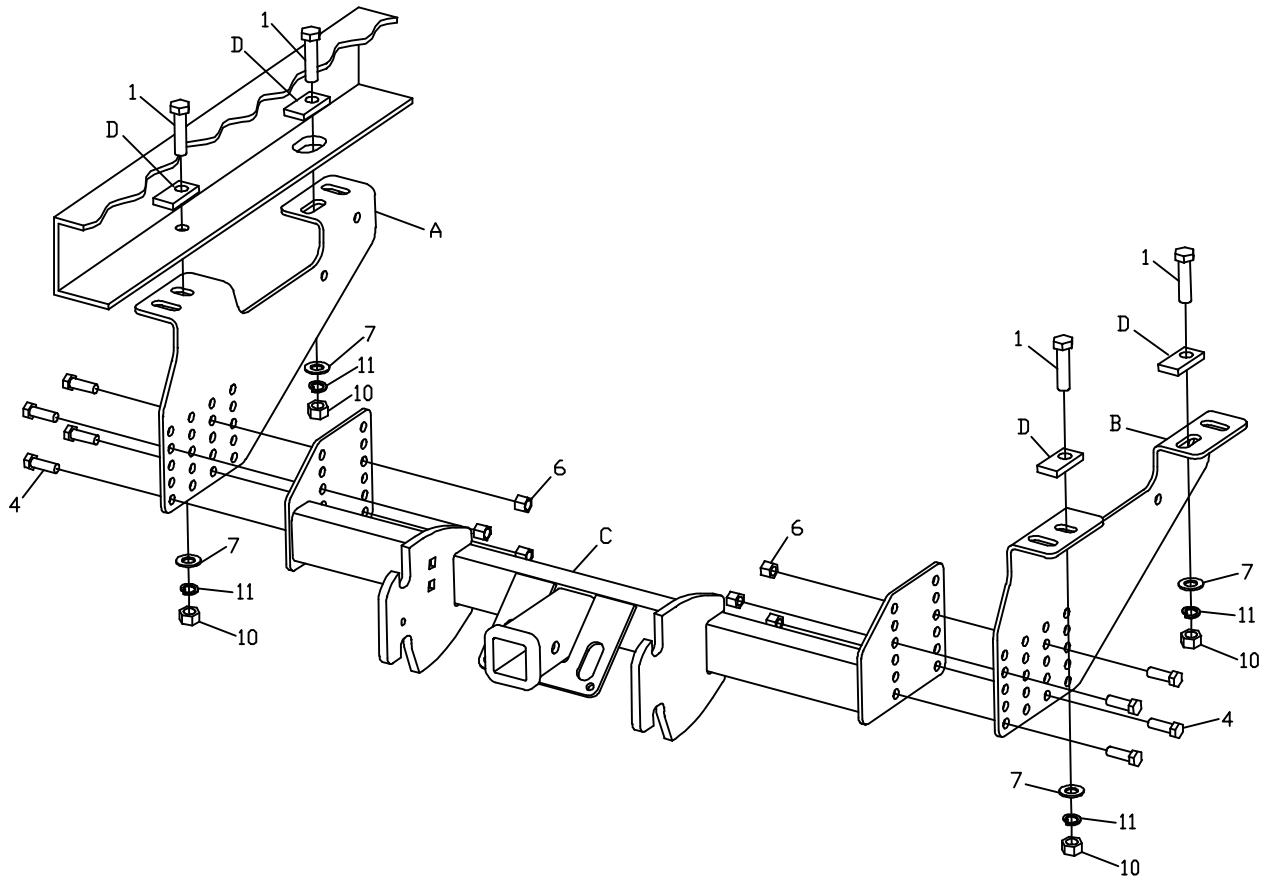
## 2003 & Newer 3/4 & 1 TON DODGE RAM

REF. NO.	DESCRIPTION	PART NO.	QTY.
A	Support Plate Assembly A	TGS05908	1
B	Support Plate Assembly B	TGS05910	1
C	Hitch Beam Assembly	TGS05930	1
D	3/8" Shim, 11/16" Dia. Hole	TGS05918	8
E	1/4" Shim, 11/16" Dia. Hole	TGS05919	4

### FASTENER KIT

Includes:

1	5/8" - 11 X 2" Hex Head Bolt	HDW01731	4
2	5/8" - 11 X 2-1/2" Hex Head Bolt	HDW05915	4
3	M12 - 1.75 X 80MM, Hex Head Bolt	HDW05916	2
4	1/2" - 13 X 1-1/2" Hex Head Bolt	HDW01728	8
5	5/8" - 11 Hex Head Nylon Lock Nut	HDW05619	4
6	1/2" - 13 Hex Head Nylon Lock Nut	HDW01748	12
7	5/8" Hardened Flat Washer	HDW01726	8
8	1/2" Hardened Flat Washer	HDW01729	2
9	1/2" Split Lock Washer	HDW01732	2
10	5/8"-11 Regular Hex Nut	HDW03891	4
11	5/8" Split Lock Washer	HDW01777	4



## **1973-1996 FORD SUPER DUTY**

The mounting procedure outlined below covers 1973-1996 Ford Super Duty. You will need to refer to the illustrations and familiarize yourself with each of the undercarriage components.

**Note: It may be necessary to loosen or remove the spare tire to access the frame and hardware. If so, be sure to reinstall and/or retighten it upon completion of undercarriage installation. If the spare tire is not removed, be sure that there is adequate clearance between the hitch and spare tire.**

1. Remove the vehicle's existing trailer hitch (if applicable).
2. Securely clamp Support Plate Assembly (A) to the passenger side frame rail with 3/8" Shim (D) between the frame and Support Plate Assembly (A) at the rear slot. Repeat for Support Plate Assembly (B) on the driver side frame rail.
3. Assemble the Hitch Beam Assembly (C) between Support Plate Assemblies (A & B) using eight 1/2" - 13 X 1-1/2" Hex Head Bolts (4), and eight 1/2" - 13 Hex Head Nylon Lock Nuts (6). For this application, Hitch Beam Assembly (C) should be installed to the rear-most row of holes in Support Plate Assemblies (A & B). See Figure G10280.
4. Adjust Support Plate Assemblies (A & B) so that Hitch Beam Assembly (C) is flush with the back of the rear bumper.

**Note: It is critical that Hitch Beam Assembly (C) be installed in the correct position to avoid interference or installation problems with the Tailgate Spreader. See Figure G10282 at the beginning of this manual for correct horizontal and vertical mounting positions.**

5. Using Support Plate Assemblies (A & B) as a guide, drill two holes in each frame rail for 5/8" hardware at the locations shown in Figure G10280.
6. Assemble the front and rear slots in Support Plate Assembly (A) to the passenger side frame rail using one 5/8"-11 X 2" Hex Head Bolt (1), one 5/8" Hardened Flat Washer (7), one 5/8" - 11 Hex Head Nylon Lock Nut (5), and one 1/4" Shim (E). **DO NOT TIGHTEN HARDWARE.**
7. Repeat Step 5 for Support Plate Assembly (B) on the driver side frame rail.
8. Remove the clamps.
9. Tighten fasteners in the following order: First tighten 1/2" - 13 X 1-1/2" Hex Head Bolts (4) and 1/2" - 13 Hex Head Nylon Lock Nuts (6) connecting Hitch Beam Assembly (C) to Support Plate Assemblies (A & B). Second, tighten all hardware connecting Support Plate Assemblies (A & B) to the frame rails.

**Note: It is important that all fasteners be properly torqued (see Figure G10284 at the beginning of this manual) to assure a safe operating Trailer Hitch and Tailgate Spreader.**

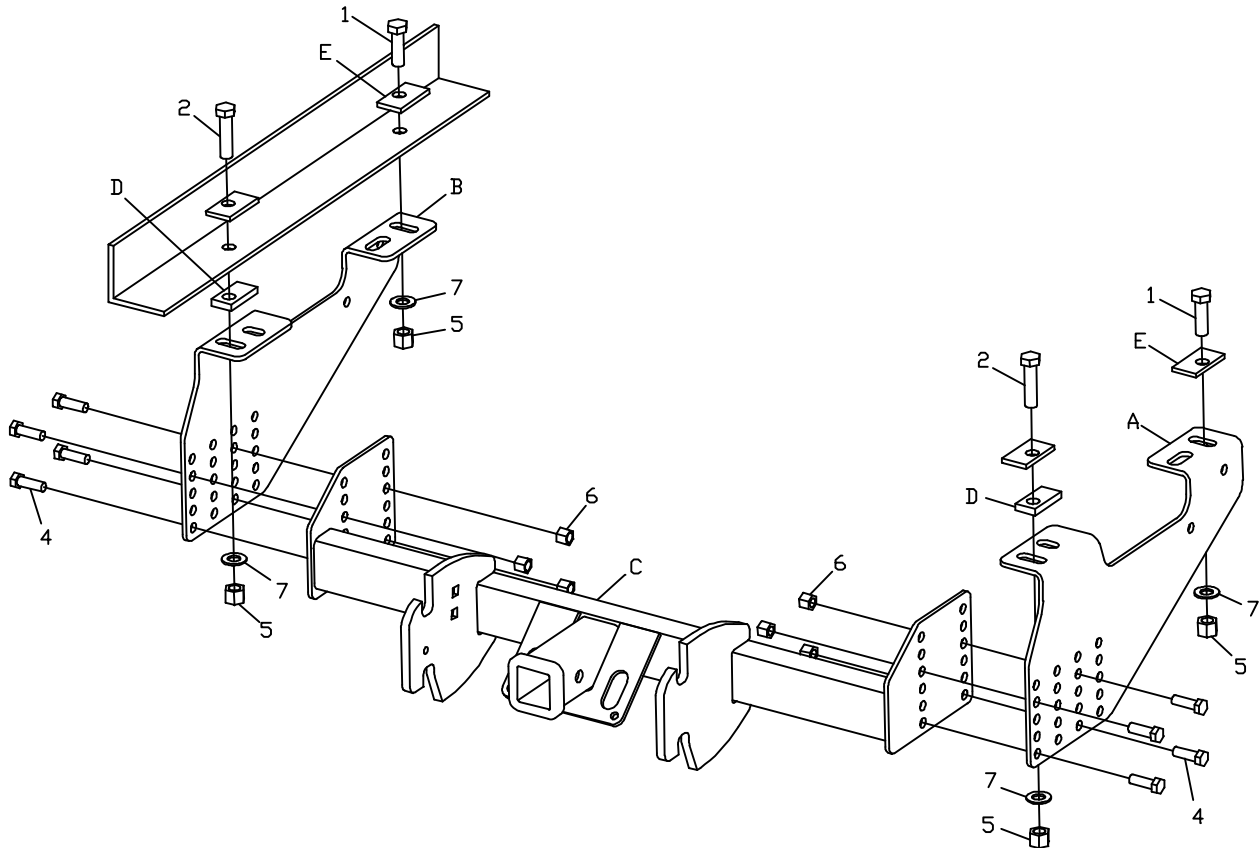
## 1973-1996 FORD SUPER DUTY

REF. NO.	DESCRIPTION	PART NO.	QTY.
A	Support Plate Assembly A	TGS05908	1
B	Support Plate Assembly B	TGS05910	1
C	Hitch Beam Assembly	TGS05930	1
D	3/8" Shim, 11/16" Dia. Hole	TGS05918	8
E	1/4" Shim, 11/16" Dia. Hole	TGS05919	4

### FASTENER KIT

Includes:

1	5/8" - 11 X 2" Hex Head Bolt	HDW01731	4
2	5/8" - 11 X 2-1/2" Hex Head Bolt	HDW05915	4
3	M12 - 1.75 X 80MM, Hex Head Bolt	HDW05916	2
4	1/2" - 13 X 1-1/2" Hex Head Bolt	HDW01728	8
5	5/8" - 11 Hex Head Nylon Lock Nut	HDW05619	4
6	1/2" - 13 Hex Head Nylon Lock Nut	HDW01748	12
7	5/8" Hardened Flat Washer	HDW01726	8
8	1/2" Hardened Flat Washer	HDW01729	2
9	1/2" Split Lock Washer	HDW01732	2
10	5/8"-11 Regular Hex Nut	HDW03891	4
11	5/8" Split Lock Washer	HDW01777	4



## **1998 & Newer FORD SUPER DUTY**

The mounting procedure outlined below covers 1998 & Newer Ford Super Duty. You will need to refer to the illustrations and familiarize yourself with each of the undercarriage components.

**Note: It may be necessary to loosen or remove the spare tire to access the frame and hardware. If so, be sure to reinstall and/or retighten it upon completion of undercarriage installation. If the spare tire is not removed, be sure that there is adequate clearance between the hitch and spare tire.**

1. Remove the vehicle's existing trailer hitch (if applicable).
2. Assemble the front and rear slots in Support Plate Assembly (A) to the passenger side frame rail using one 5/8"-11 X 2" Hex Head Bolt (1), one 5/8" Hardened Flat Washer (7), one 5/8" - 11 Hex Head Nylon Lock Nut (5), and one 1/4" Shim (E). **DO NOT TIGHTEN HARDWARE.**
3. Repeat Step 3 for Support Plate Assembly (B) on the driver side frame rail.
4. Assemble the Hitch Beam Assembly (C) between Support Plate Assemblies (A & B) using eight 1/2" - 13 X 1-1/2" Hex Head Bolts (4), and eight 1/2" - 13 Hex Head Nylon Lock Nuts (6). For this application, Hitch Beam Assembly (C) should be installed to the rear-most row of holes in Support Plate Assemblies (A & B). See Figure G10281.

**Note: It is critical that Hitch Beam Assembly (C) be installed in the correct position to avoid interference or installation problems with the Tailgate Spreader. See Figure G10282 at the beginning of this manual for correct horizontal and vertical mounting positions.**

5. Tighten fasteners in the following order: First tighten 1/2" - 13 X 1-1/2" Hex Head Bolts (4) and 1/2" - 13 Hex Head Nylon Lock Nuts (6) connecting Hitch Beam Assembly (C) to Support Plate Assemblies (A & B). Second, tighten all hardware connecting Support Plate Assemblies (A & B) to the frame rails.

**Note: It is important that all fasteners be properly torqued (see Figure G10284 at the beginning of this manual) to assure a safe operating Trailer Hitch and Tailgate Spreader.**



## 1998 & Newer FORD SUPER DUTY

REF. NO.	DESCRIPTION	PART NO.	QTY.
A	Support Plate Assembly A	TGS05908	1
B	Support Plate Assembly B	TGS05910	1
C	Hitch Beam Assembly	TGS05930	1
D	3/8" Shim, 11/16" Dia. Hole	TGS05918	8
E	1/4" Shim, 11/16" Dia. Hole	TGS05919	4

### FASTENER KIT

Includes:

1	5/8" - 11 X 2" Hex Head Bolt	HDW01731	4
2	5/8" - 11 X 2-1/2" Hex Head Bolt	HDW05915	4
3	M12 - 1.75 X 80MM, Hex Head Bolt	HDW05916	2
4	1/2" - 13 X 1-1/2" Hex Head Bolt	HDW01728	8
5	5/8" - 11 Hex Head Nylon Lock Nut	HDW05619	4
6	1/2" - 13 Hex Head Nylon Lock Nut	HDW01748	12
7	5/8" Hardened Flat Washer	HDW01726	8
8	1/2" Hardened Flat Washer	HDW01729	2
9	1/2" Split Lock Washer	HDW01732	2
10	5/8"-11 Regular Hex Nut	HDW03891	4
11	5/8" Split Lock Washer	HDW01777	4

