



P.O. Box 787 Iron Mountain, MI 49801-0787  
ISO 9001:2008 REGISTERED  
bossplow.com

**2016 & NEWER  
YAMAHA WOLVERINE  
UTV UNDERCARRIAGE  
MOUNTING INSTRUCTIONS  
(PART NO. LTA13220)**

# **WARNING**

Always follow the vehicle manufacturers' recommendations relating to system installation.

Due to the variety of equipment that can be installed on this vehicle, it is necessary to verify that the Gross Vehicle Weight Rating (GVWR) is not exceeded at any time. This may require weighing the vehicle and adding ballast as necessary. It may also limit payload capacity of the vehicle. It is the operator's responsibility to verify that these ratings are not exceeded.

## **2016 & NEWER YAMAHA WOLVERINE UTV UNDERCARRIAGE MOUNTING INSTRUCTIONS**

The mounting procedure outlined below covers 2016 & Newer Yamaha Wolverine models. You will need to refer to the illustrations and familiarize yourself with each of the undercarriage components and their relative position to each other. Then proceed as follows:

1. Park the vehicle on a level surface, set the parking brake, shut off the engine and remove the key from the ignition switch.
2. Remove vehicle front skid plate and factory hardware.
3. Using a 7/16" drill bit, drill through the two hole locations on vehicles' front bumper where the skid plate was secured.
4. Using two 3/8"-16 x 1-1/4" Hex Head Bolt (A) and two 3/8"-16 Nylon Lock Nuts (B), position and attach Skid Plate Assembly (1) to vehicle frame. Bolts should be snug.
5. Using the Skid Plate Assembly (1) as a template, mark the three hole locations on the underside of the Skid Plate Assembly (1).
6. Remove Skid Plate Assembly (1).
7. Using a 7/16" drill bit, drill through the three marked hole locations on the underside of the vehicles' front frame member.
8. Using two 3/8"-16 x 2" x 2-5/8" U- Bolts (D) and four 3/8"-16 Nylon Lock Nuts (B) attach rear of Skid Plate Assembly (1) to vehicle frame. Leave loose.
9. Using three 3/8"-16 x 1-1/4" Hex Head Bolts (A), three 3/8"-16 Nylon Lock Nuts (B), and Backer Plate (2) position and loosely attach Skid Plate Assembly (1). Backer Plate (2) should be located on the opposite side of bumper as Skid Plate Assembly (1).
10. Using two 3/8"-16 x 1-1/4" Hex Head Bolts (A), two 3/8"-16 Nylon Lock Nuts (B) and two 3/8" Flat Washers (C) attach front of Skid Plate Assembly (1) to vehicles' front bumper.
11. Tighten all fasteners to recommended torque found in Figure 2.

## 2016 & NEWER YAMAHA WOLVERINE UTV UNDERCARRIAGE INSTALLATION PROCEDURE

REF. NO.	DESCRIPTION	PART NO.	QTY.
1	Skid Plate Assembly	LTA13221	1
2	Backer Plate	LTA13228	1
	Fastener Kit	HDW13222	1
Includes:			
A	3/8"-16 x 1-1/4" GR5 Hex Head Bolt	HDW01771	5
B	3/8"-16 Nylon Lock Nut	HDW01720	9
C	3/8" Flat Washer	HDW01733	2
D	3/8"-16 x 2" x 2-5/8" U-Bolt	HDW13229	2

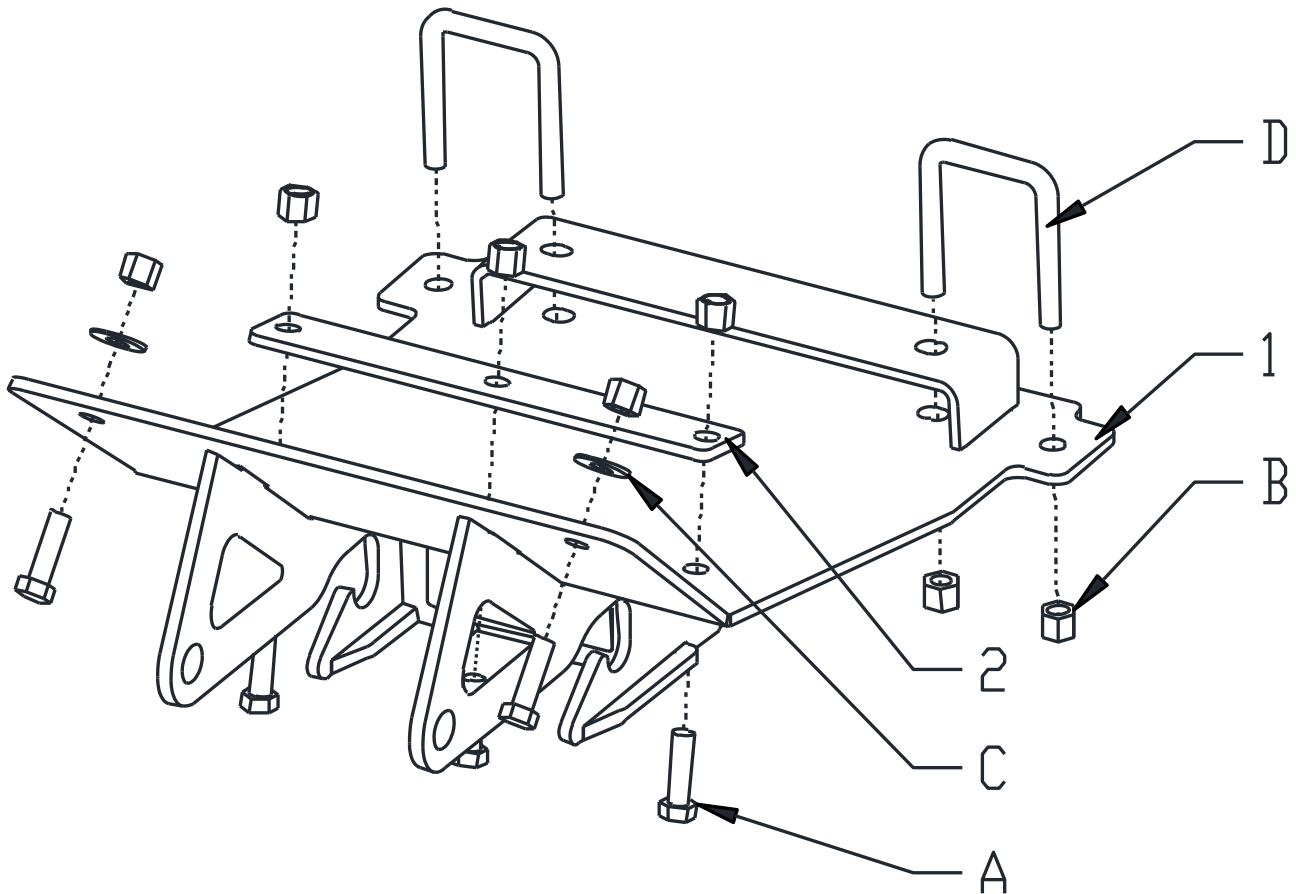


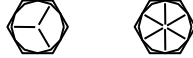
Figure 1

G10938

## RECOMMENDED SUSPENSION SETTINGS

- Increase preload of front springs to highest setting. See manufacturer's specifications for proper adjustment procedure.

## GUIDE TO RECOMMENDED ASSEMBLY TORQUE



DIAMETER / PITCH	GRADE 5	GRADE 8	GRADE 8.8	GRADE 10.9
1/4-20	6	9		
5/16-18	14	19		
3/8-16	23	33		
7/16-14	38	53		
1/2-13	56	80		
9/16-12	82	116		
5/8-11	113	159		
3/4-10	201	283		
M10 X 1.25			36	
M10 X 1.5				49
M12 X 1.75				71
M14 X 2.0				80

ALL TORQUE VALUES ARE IN FOOT-POUNDS (FT.-LB.)

**Figure 2**

G10410

\* The torque values listed above are based on dry, coated bolts. Variables such as oil or other lubrications may appreciably alter these values and must be taken into consideration.

**NOTE:** IT IS IMPORTANT THAT ALL FASTENERS BE PROPERLY TORQUED TO ASSURE A SAFE OPERATING PLOW. RE-TIGHTEN ALL FASTENERS AFTER 2 HOURS OF PLOWING.