

⚠ WARNING

CALIFORNIA Proposition 65 Warning

This product contains a chemical or chemicals known to the State of California to cause cancer, birth defects, or reproductive harm.

Installation

1. Park the machine on level ground, engage the parking brake, shut off the engine, and remove the key.
2. Remove the 2 bolts securing the lower 2 parts of the bumper to the vehicle skid plate, but leave the bumper in place.
3. Drill 7/16-inch holes through the vehicle bumper, grill, and frame tubing using the holes from the previously removed bolts as a guide.

Important: Place a scrap of sheet metal between the radiator and the vehicle frame while drilling to avoid damaging the radiator.

4. Secure the plow skid plate to the vehicle frame using 2 bolts (3/8 inch) and 2 washers (3/8 inch) as shown in [Figure 1](#).

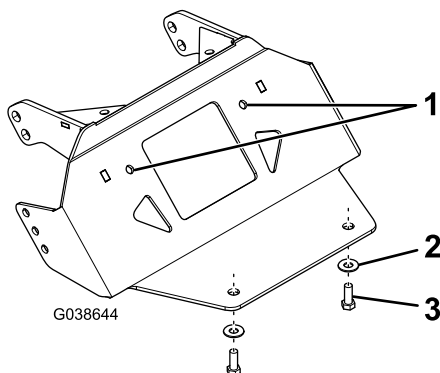


Figure 1

1. Drill guide holes.
2. Washer (3/8 inch)
3. Bolt (3/8 inch)

Safety

- Always follow the vehicle manufacturer's recommendations relating to system installation.
- Due to the variety of equipment that you can install using the undercarriage, ensure that the gross-vehicle-weight rating (GVWR) is not exceeded at any time. You may need to weigh the vehicle and add ballast or limit the payload of the vehicle to compensate.

6. Remove the bolts from step 4 and remove the plow skid plate.
7. Secure the top plate to the vehicle skidplate using 4 long bolts (5/16 inch), 6 washers (5/16 inch), and 4 nuts (5/16 inch), and leave the fasteners finger-tight ([Figure 2](#)).

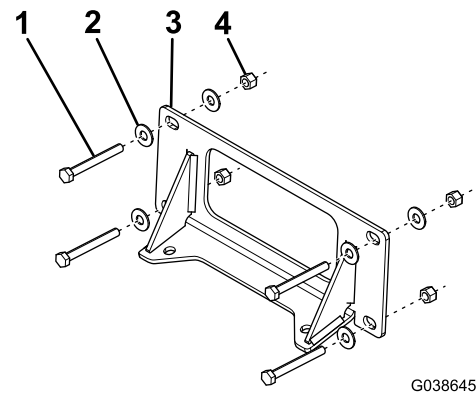


Figure 2

1. Long bolt (5/16 inch)
2. Washer (5/16 inch)
3. Top plate
4. Nut (5/16 inch)

8. Secure the plow skid plate to the vehicle frame using 4 bolts (3/8 inch), 4 washers (3/8 inch), and 2 nuts (3/8 inch), and leave the fasteners finger-tight ([Figure 3](#)).

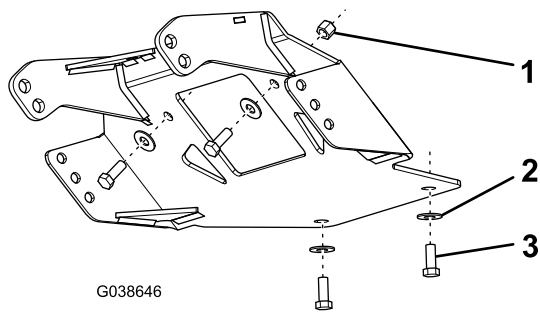


Figure 3

- 1. Nut (3/8 inch)
- 2. Washer (3/8 inch)
- 3. Bolt (3/8 inch)

-
- 9. Secure the top plate to the plow skid plate using 2 short bolts (5/16 inch) and 2 washers (5/16 inch), and leave the fasteners finger-tight (Figure 4).

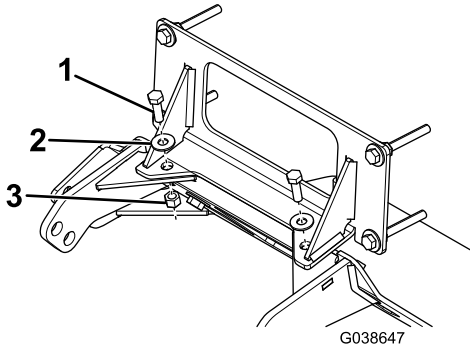


Figure 4

- 1. Short bolt (5/16 inch)
- 2. Washer (5/16 inch)
- 3. Nut (5/16 inch)

-
- 10. Torque the 5/16-inch bolts to 19 N·m (14 ft-lb), and torque the 3/8-inch bolts to 31 N·m (23 ft-lb).
 - 11. Mount the pushbeam to the plow skid plate using 4 bolts (1/2 inch), 4 locknuts (1/2 inch), 4 bolts (3/8 inch), and 4 locknuts (3/8 inch) as shown in Figure 5.

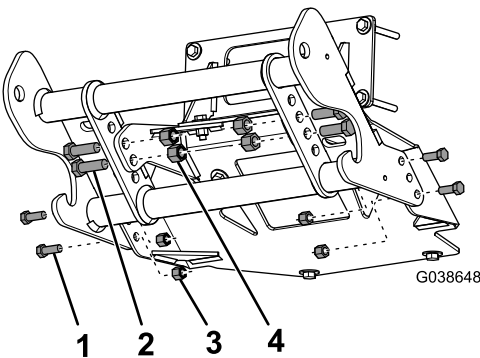


Figure 5

- 1. Bolt (3/8 inch)
- 2. Bolt (1/2 inch)
- 3. Locknut (3/8 inch)
- 4. Locknut (1/2 inch)

-
- 12. Torque the 1/2-inch bolts to 76 N·m (56 ft-lb), and torque the 3/8-inch bolts to 31 N·m (23 ft-lb).

- 13. Apply the BOSS decal to the top tube on the pushbeam.