

BOSS PRODUCTS
A Division of Northern Star Industries, Inc.
P.O. Box 787 Iron Mountain MI 49801-0787
www.bossplow.com

**2007 & NEWER
CUB CADET VOLUNTEER
RT3 UNDERCARRIAGE
MOUNTING INSTRUCTIONS
(PART NO. LTA12720)**

WARNING

Always follow the vehicle manufacturers' recommendations relating to system installation.

Due to the variety of equipment that can be installed on this vehicle, it is necessary to verify that the Front Gross Axle Weight Rating (FGAWR), Rear Gross Axle Weight Rating (RGAWR), and the Gross Vehicle Weight Rating (GAWR) are not exceeded at any time. This may require weighing the vehicle and adding ballast as necessary. It may also limit payload capacity of the vehicle. It is the operator's responsibility to verify that these ratings are not exceeded.

2007 & NEWER CUB CADET VOLUNTEER RT3 UNDERCARRIAGE MOUNTING INSTRUCTIONS

The mounting procedure outlined below covers 2007 & NEWER Cub Cadet Volunteer models. You will need to refer to the illustrations and familiarize yourself with each of the undercarriage components and their relative position to each other. Then proceed as follows:

1. Unscrew four existing bolts - two on each side - that attach lower parts of Bumper to Frame. Let Bumper remain in place.
2. Align two holes on each side of Skidplate Assembly (75) with holes on Frame from Step 1. Using 3/8"-16 X 1" Hex Head Bolts (B) and 3/8"-16 Nylon Lock Nuts (C), attach Skidplate Assembly (75) to Frame. Leave finger tight.
3. Clamp the Skidplate Assembly (75) to Bumper using opening on bottom-front face. Using a 7/16" drill bit, drill four holes through Bumper in the same locations as the slots/holes on the Skidplate Assembly (75) referenced by the axis lines in Figure (2).

NOTE: Slotted holes are slightly offset as shown in Figure (2).

4. For each of the two Angle Bracket Assemblies (63) align two holes on each side with two holes on Frame and two holes on Bumper (from Step 3). Using 5/16"-18 X 1" Hex Head Bolts (I) and 5/16"-18 Nylon Lock Nuts (A) attach Angle Bracket Assembly (63) to Frame. Using 3/8"-16 X 1" Hex Head Bolts (B) and 3/8"-16 Nylon Lock Nuts (C), attach remaining Angle Bracket Assembly (63) to Bumper/Skidplate Assembly (75). Leave finger tight.
5. With the Skidplate Assembly (75) and Angle Bracket Assemblies (63) in place, tighten four 5/16"-18 X 1" Hex Head Bolts (I), along with the eight 3/8"-16 X 1" Hex Head Bolts (B).

NOTE: The proper height adjustment for the Pushbeam (62) is approximately 17" from the ground to the center of Pushbeam (62) pin-receiving hole (See Figure 2) for Plow System.

6. Using 3/8"-16 X 1" Hex Head Bolts (B), 3/8"-16 Nylon Lock Nuts (C), 1/2"-13 X 1-1/2" Hex Head Bolts (D), and 1/2"-13 Nylon Lock Nuts (E), mount Pushbeam Assembly (62) to Skidplate Assembly (75).
7. With all undercarriage parts in place, securely fasten all remaining mounting hardware. It is important that all fasteners be properly torqued (See Figure 3) to assure a safe operating plow. Retighten all fasteners after two hours of plowing.
8. Add BOSS decal to front of top tube on Pushbeam Assembly (62).

2007 & NEWER CUB CADET VOLUNTEER RT3 UNDERCARRIAGE INSTALLATION PROCEDURE

REF. NO.	DESCRIPTION	PART NO.	QTY.
62	Pushbeam Assembly	PBA12535	1
75	Skidplate Assembly	LTA12754	1
63	Angle Bracket Assembly	LTA12758	2
	FASTENER KIT,UC,UTV,CUB CADET	HDW12752	1
Includes:			
A	NUT,5/16-18,NYL INS,YZN	HDW01714	4
B	HHCS, 3/8-16X1 NC GR5 PLT	HDW01717	12
C	NUT,3/8-16,NYL INS,YZN	HDW01720	12
D	HHCS,1/2-13X1-1/2,NC,GR5,YZN	HDW01728	4
E	NUT,1/2-13, NYL INS, YZN	HDW01748	4
I	HHCS,5/16-18X1,NC,GR5,YZN	HDW01713	4

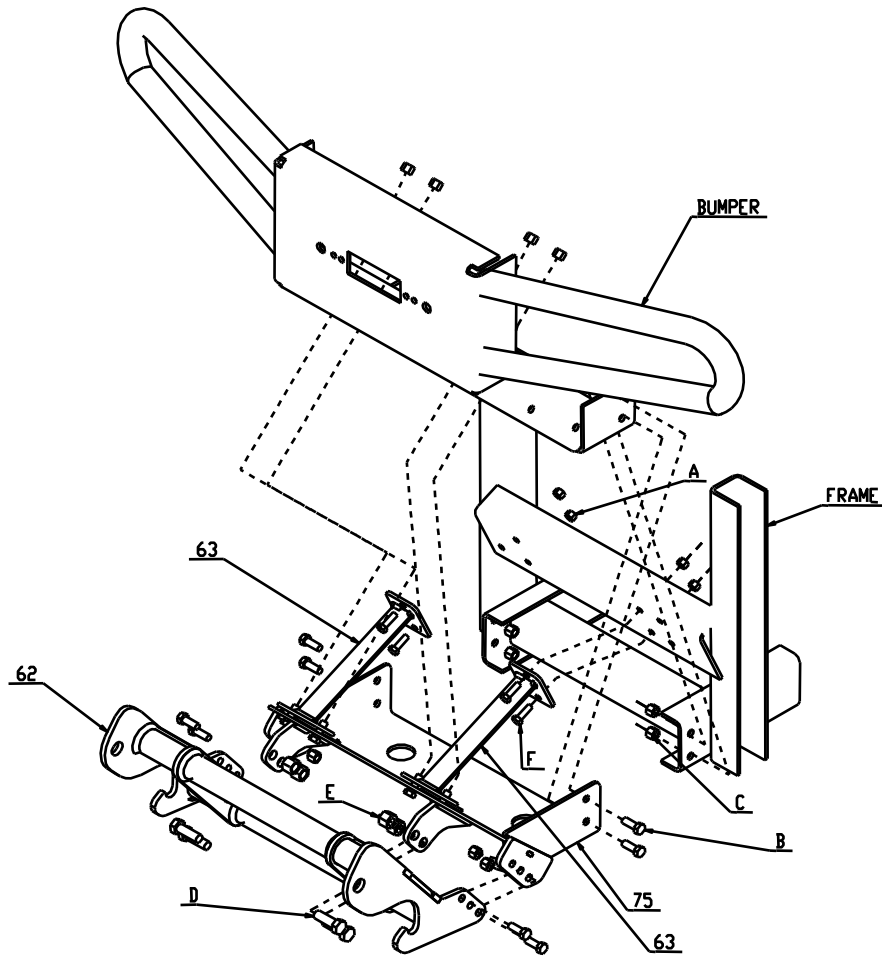


Figure 1

G10705

SKIDPLATE ASSEMBLY

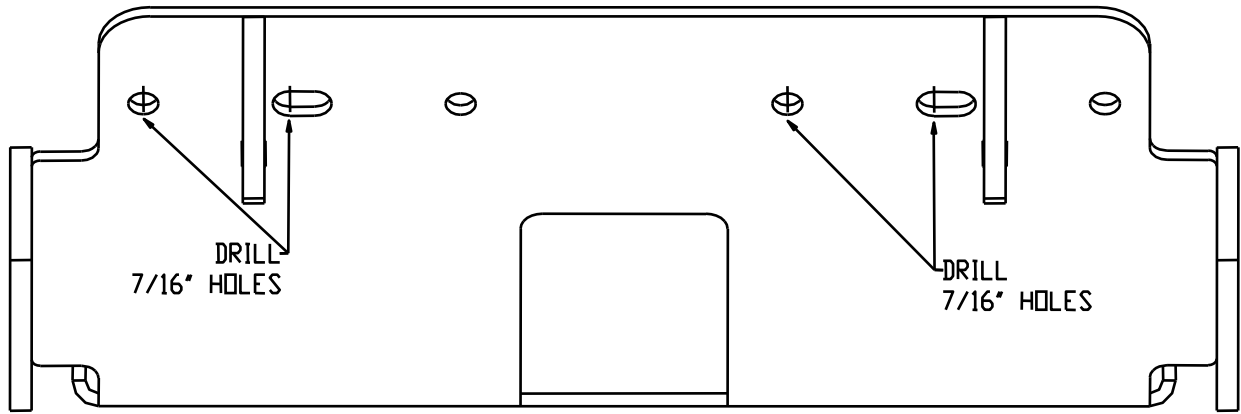


Figure 2

G10706

RECOMMENDED PUSHBEAM HEIGHT

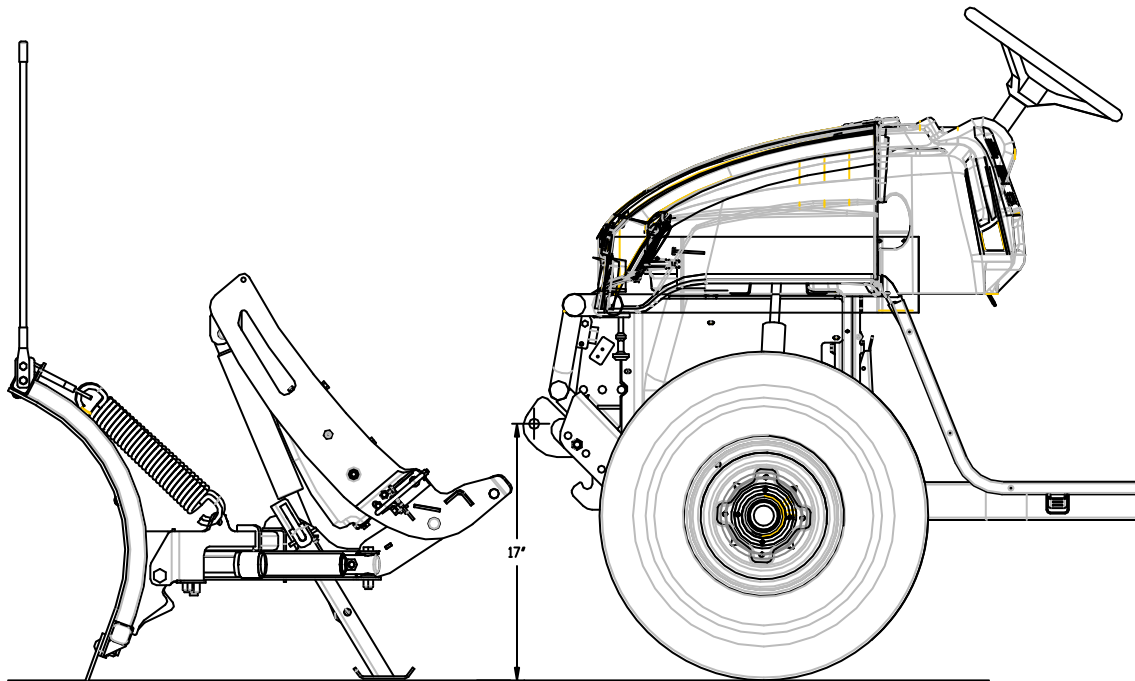


Figure 3

G10502

GUIDE TO RECOMMENDED ASSEMBLY TORQUE



DIAMETER / PITCH	GRADE 5	GRADE 8	GRADE 8.8	GRADE 10.9
1/4-20	6	9		
5/16-18	14	19		
3/8-16	23	33		
7/16-14	38	53		
1/2-13	56	80		
9/16-12	82	116		
5/8-11	113	159		
3/4-10	201	283		
M10 X 1.25			36	
M10 X 1.5				49
M12 X 1.25				92
M12 X 1.75				86
M14 X 2.0				136
M16 X 2.0				210

ALL TORQUE VALUES ARE IN FOOT-POUNDS (FT.-LB.)

Figure 4

G10668

* The torque values listed above are based on dry, coated bolts, variables such as oil, or other lubrications may appreciably alter these values and must be taken into consideration.

NOTE: IT IS IMPORTANT THAT ALL FASTENERS BE PROPERLY TORQUED TO ASSURE A SAFE OPERATING PLOW. RE-TIGHTEN ALL FASTENERS AFTER 2 HOURS OF PLOWING.