

BOSS PRODUCTS
A Division of Northern Star Industries, Inc.
P.O. Box 787 Iron Mountain MI 49801-0787
www.bosspow.com

**2013 & NEWER
POLARIS RANGER XP 900
RT3 UNDERCARRIAGE
MOUNTING INSTRUCTIONS
(PART NO. LTA12650)**

WARNING

Always follow the vehicle manufacturers' recommendations relating to system installation.

Due to the variety of equipment that can be installed on this vehicle, it is necessary to verify that the Front Gross Axle Weight Rating (FGAWR), Rear Gross Axle Weight Rating (RGAWR), and the Gross Vehicle Weight Rating (GAWR) are not exceeded at any time. This may require weighing the vehicle and adding ballast as necessary. It may also limit payload capacity of the vehicle. It is the operator's responsibility to verify that these ratings are not exceeded.

2013 & NEWER POLARIS RANGER XP 900 RT3 UNDERCARRIAGE MOUNTING INSTRUCTIONS

The mounting procedure outlined below covers 2013 & Newer Polaris Ranger XP 900 models. You will need to refer to the illustrations and familiarize yourself with each of the undercarriage components and their relative position to each other. Then proceed as follows:

1. Remove two existing fasteners from vehicle Front Bumper on bottom side of Front Bumper.
2. Align holes in Skid Plate Assembly (75) with holes in vehicle Front Bumper. Using existing fasteners removed in the previous step, attach Skid Plate Assembly (75) to vehicle Front Bumper. Fasteners should be finger tight.
3. Using 3/8"-16 X 1" Hex Head Cap Screw (A), and 3/8"-16 Nylon Lock Nuts (D), attach Skid Plate Assembly (75) to Front Bumper on bottom side of Front Bumper. Fasteners should be finger tight.

NOTE: If installing on a vehicle with a OEM Polaris winch continue on to Step 4. If installing on a vehicle without a winch skip to Step 7.

4. Remove the lower driver side bolt from OEM Polaris winch.
5. Align Driver Side Pushbeam Support Plate (62A) with square holes in vehicle frame and bottom mounting hole of OEM Polaris winch.
6. Place Pushbeam Support Plate Spacer (63) between Driver Side Pushbeam Support Plate (62A), only one hole of Pushbeam Support Plate Spacer (63) will be aligned. Skip to Step 8.
7. Align Driver Side Pushbeam Support Plate (62A) and Pushbeam Support Plate Spacer (63) with square holes in vehicle frame.
8. Attach Driver Side Pushbeam Support Plate (62A) and Pushbeam Support Plate Spacer (63) to vehicle frame using 3/8" Carriage Bolts (C) and 3/8" Nylon Lock Nuts (D). Fasteners should be finger tight.
9. Using 3/8"-16 X 1" Hex Head Cap Screw (A), 3/8" Washers (F), and 3/8"-16 Nylon Lock Nuts (D), attach Skid Plate Assembly (75) and Driver Side Pushbeam Support Plate (62A) to Front Bumper on front side of Front Bumper. Fasteners should be finger tight.
10. Repeat the previous steps for Passenger Side Pushbeam Support Plate (62B).

NOTE: The proper height adjustment for the Pushbeam (62) is approximately 17" from the ground to the center of Pushbeam (62) pin-receiving hole (See Figure 2) for Plow System.

11. Using 3/8"-16 X 1" Hex Head Bolts (A), 3/8"-16 Nylon Lock Nuts (D), 1/2"-13 X 1-1/2" Hex Head Bolts (B), and 1/2"-13 Nylon Lock Nuts (E), mount Pushbeam Assembly (62) to Skid Plate Assembly (75).
12. With all undercarriage parts in place, securely fasten all remaining mounting hardware. It is important that all fasteners be properly torqued (See Figure 3) to assure a safe operating plow. Retighten all fasteners after two hours of plowing.
13. Add BOSS decal to front of top tube on Pushbeam Assembly (62).

2013 & NEWER POLARIS RANGER XP 900 RT3 UNDERCARRIAGE INSTALLATION PROCEDURE

REF. NO.	DESCRIPTION	PART NO.	QTY.
62	Pushbeam Assembly	PBA12535	1
62A	Pushbeam Support Plate, Driver Side	PBA12725	1
62B	Pushbeam Support Plate, Passenger Side	PBA12735	1
63	Pushbeam Support Plate Spacer	PBA12721	2
75	Skid Plate Assembly	LTA12695	1
	FASTENER KIT,UC,UTV,POLARIS RANGER XP 900,2013+	HDW12724	1
Includes:			
A	3/8"-16 X 1" GR5 Hex Head Bolt	HDW01717	14
B	1/2"-13X1-1/2" GR5 Hex Head Bolt	HDW01728	4
C	3/8"-16 Carriage Bolt	HDW05576	4
D	3/8"-16 Nylon Lock Nut	HDW01720	18
E	1/2"-13 Nylon Lock Nut	HDW01748	4
F	3/8" Flat Washer	HDW01733	12

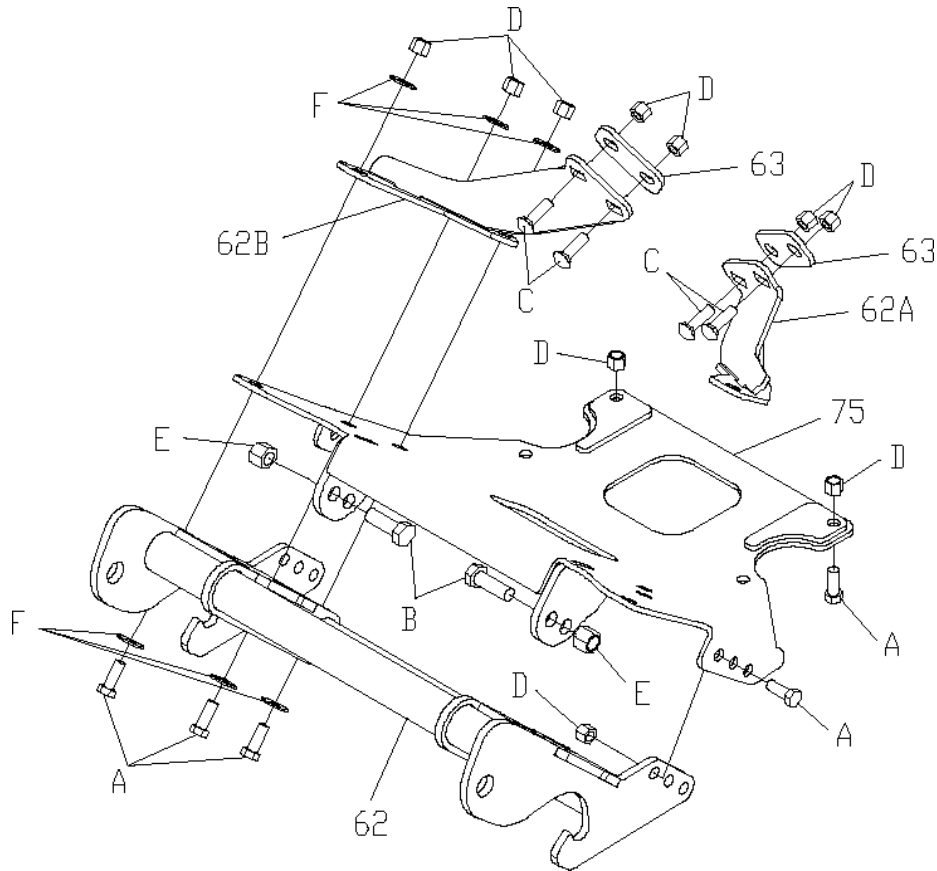


Figure 1

G10708

RECOMMENDED PUSHBEAM HEIGHT

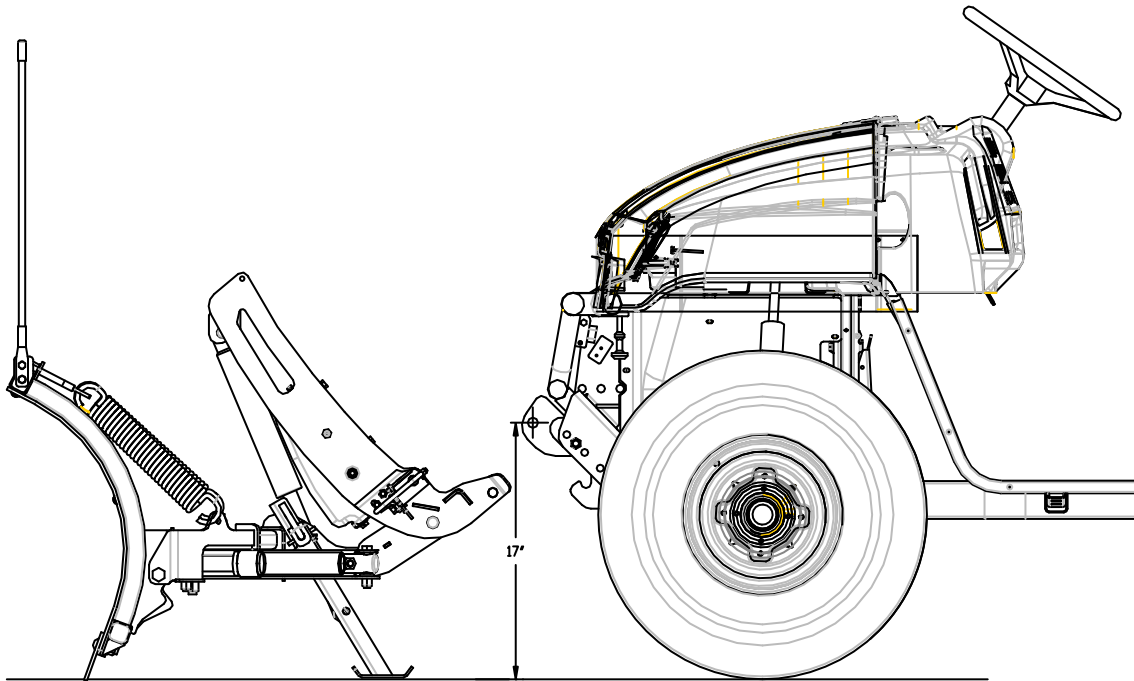


Figure 2

G10502

GUIDE TO RECOMMENDED ASSEMBLY TORQUE



DIAMETER / PITCH	GRADE 5	GRADE 8	GRADE 8.8	GRADE 10.9
1/4-20	6	9		
5/16-18	14	19		
3/8-16	23	33		
7/16-14	38	53		
1/2-13	56	80		
9/16-12	82	116		
5/8-11	113	159		
3/4-10	201	283		
M10 X 1.25			36	
M10 X 1.5				49
M12 X 1.75				71
M14 X 2.0				80

ALL TORQUE VALUES ARE IN FOOT-POUNDS (FT.-LB.)

Figure 3

G10410

* The torque values listed above are based on dry, coated bolts, variables such as oil, or other lubrications may appreciably alter these values and must be taken into consideration.

NOTE: IT IS IMPORTANT THAT ALL FASTENERS BE PROPERLY TORQUED TO ASSURE A SAFE OPERATING PLOW. RE-TIGHTEN ALL FASTENERS AFTER 2 HOURS OF PLOWING.