



A Division of The Toro Company
P.O. Box 787 Iron Mountain, MI 49801-0787
ISO 9001:2008 REGISTERED
bossplow.com

Negative Switch SL3 Relay Kit Installation Instructions

2000-2006 Toyota Tundra SR/SR5

1999-2002 Dodge Ram 1500-3500

1999-2002 Dodge Dakota

2000-2003 Dodge Durango

1999-2002 Chevrolet/GMC 1500-3500

2004-2013 Chevrolet Colorado

2004-2013 GMC Canyon

MSC11201

This installation procedure is for:

2000-2006 Toyota Tundra SR and SR5
 1999-2002 Dodge 1500-3500
 1999-2002 Dodge Dakota
 2000-2003 Dodge Durango
 1999-2002 Chevy/GMC 1500-3500
 2004-2013 Chevy/GMC Colorado/Canyon

NOTE: On vehicles equipped with fog lights, the fog lights must remain in the **OFF** position when a plow is attached to the vehicle and Truck/Plow switch is in the Plow position. Failure to do so will result in the Hi beam function of the SL3 headlights to remain engaged.

1. Locate the Vehicle Make connector in the BOSS vehicle side-harness and disconnect the individual Red/Yellow wire and White/Yellow wire from the molded plug.

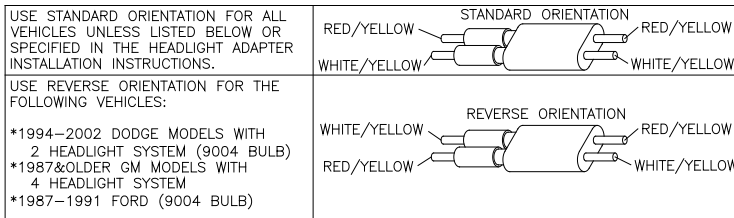


Figure 1. Vehicle Make Connector G10202

2. For 1999-2002 Dodge vehicles equipped with 9004 headlight bulbs, proceed to the next section on page 3.
3. For all others, proceed as follows.
3. Refer to Figure 2 on page 3 for clarification of installation instructions.
4. Connect the RED wire with male bullet connector from the MSC11201 Relay Kit (78B) to the RED/YELLOW wire with female bullet connector in the Vehicle Make Connector (77A)
5. Connect the RED/YELLOW wire with male bullet connector from the BOSS harness (75A) to the RED/YELLOW wire with female bullet connector from the MSC11201 Relay Kit (75B)
6. Connect the BROWN wire with male bullet connector from the MSC11201 Relay Kit (77B) to the WHITE/YELLOW wire with female bullet connector in the Vehicle Make Connector (77A).
7. Connect the BROWN wire with female bullet connector and 3/8 ring terminal (74B) to the WHITE/YELLOW wire with male bullet connector from the BOSS harness (74A)

8. Locate the BLUE/YELLOW wire coming from the main relay pack of the BOSS harness. Cut this wire in a location that both ends are conveniently accessed (roughly half way between the relay packs and the main wire loom)
 9. Crimp and heat shrink the provided FEMALE bullet connector onto the relay side of the BLUE/YELLOW wire (76A) cut in Step 8.
 10. Crimp and heat shrink the provided MALE bullet connector onto the plow side of the BLUE/YELLOW wire cut (73A) in Step 8.
 11. Connect the BLUE wire with male bullet connector from the MSC11201 Relay Kit (76B) to the BLUE/YELLOW wire with female bullet connector added in Step 9 (76A).
 12. Connect the BLUE/YELLOW wire with female bullet connector from the MSC11201 Relay Kit (73B) to the male bullet connector on the BLUE/YELLOW wire added in Step 10 (73A).
 13. Securely attach relay pack of adapter MSC11201 in the engine compartment.
 14. Route the BROWN wire from Step 7 to the vehicle battery. Secure the 3/8" ring connector to the negative battery terminal.
 15. Route the two fused RED wires from the MSC11201 harness to the vehicle battery. Secure the two 3/8" ring connectors to the positive battery terminal.
-
- NOTICE**
- All plow wiring should be secured within the engine compartment in a position that provides sufficient room so that hot or moving parts will not be contacted. Vehicle damage could occur if wires are not properly secured.
-
16. Locate the main 5-relay pack in the BOSS harness. Remove the 5th relay from the pack. Relay #5 will have a RED/WHITE, WHITE/YELLOW, BLUE/YELLOW, and RED/Lt. BLUE wire connected to it. Thoroughly coat the relay receptacle with dielectric grease to prevent corrosion.

Negative Switch SL3 Relay Kit Installation Procedure

Trucks Equipped with 9004 Headlight Bulbs

1. For 9004 headlight bulb equipped trucks, refer to Figure 2 on page 4 and proceed as follows.
2. Connect the RED wire with male bullet connector from the MSC11201 Relay Kit (78B) to the WHITE/YELLOW wire with female bullet connector in the Vehicle Make Connector (77A).
3. Connect the RED/YELLOW wire with the male bullet connector from the BOSS Harness (77B) to the RED/YELLOW wire with female bullet connector in the Vehicle Make Connector (77A).
4. Follow Steps 7-16 on page 2 to complete installation.

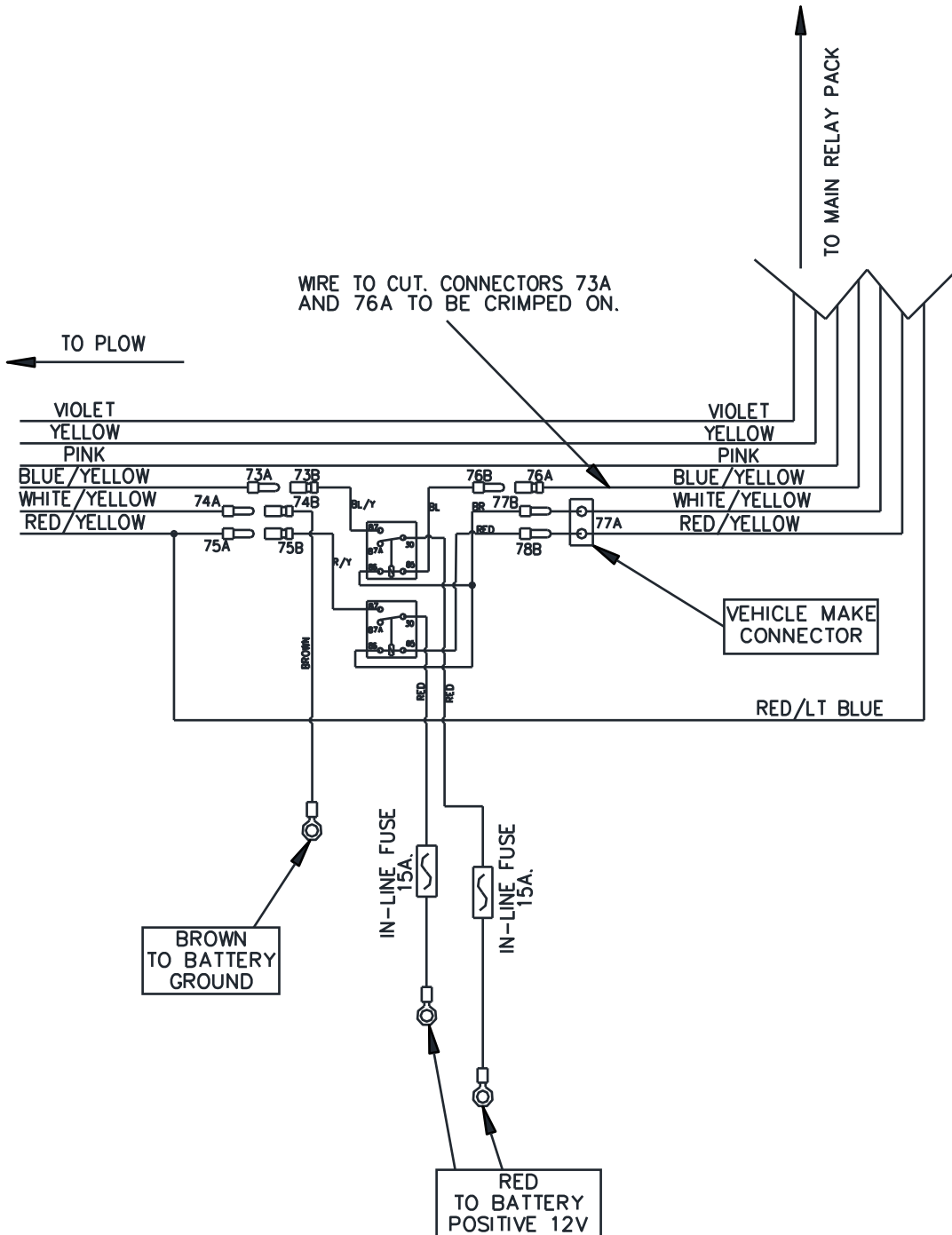


Figure 2. Typical MSC11201 Headlight Adapter Connection

G13980

Negative Switch SL3 Relay Kit Installation Procedure

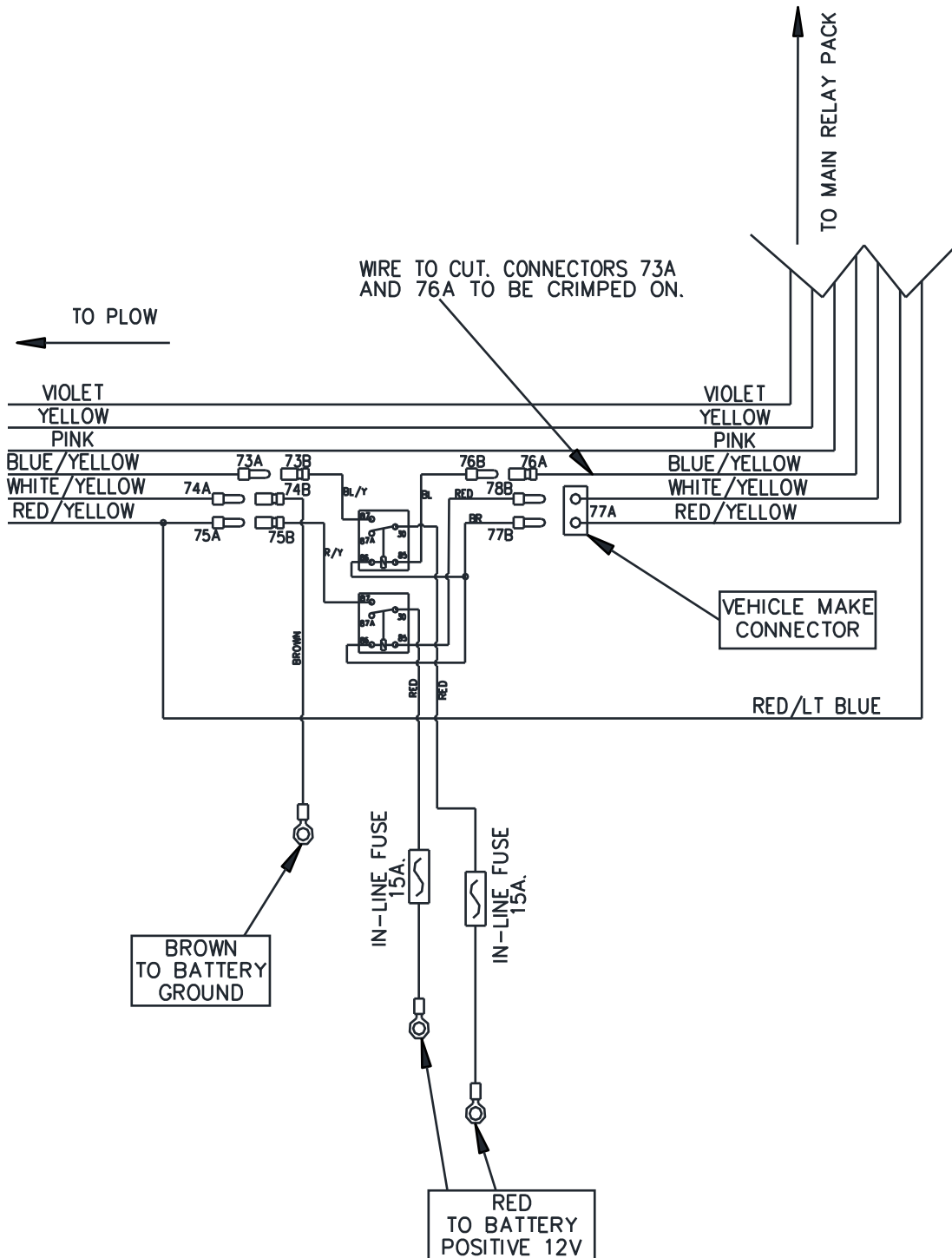


Figure 3. Dodge 9004 Bulb Headlight Adapter Connection

G13981