



**A Division of The Toro Company**

P.O. Box 787 Iron Mountain, MI 49801-0787

ISO 9001:2008 REGISTERED

bossplow.com

**Caster Kit, STB  
Installation Instructions**

**Kit Number:  
MSC09215**

Covering Plow Models:  
7'6" Standard Duty STB  
7'6", 8'0", 8'6" and 9' Super Duty STB

**Caster Kit, HTX/SPORT  
Installation Instructions**

**Kit Number:  
MSC09249**

Covering Plow Models:  
7'0", 7'6" HTX/SPORT Duty STB

**Caster Kit, V-Blade  
Installation Instructions**

**Kit Number:  
MSC09216**

Covering Plow Models:  
7'6", 8'2", 9'2" and 10' Power V  
7'6", 8'2", 9'2" Power V XT

**Caster Kit, UTV V-Blade  
Installation Instructions**

**Kit Number:  
MSC09235**

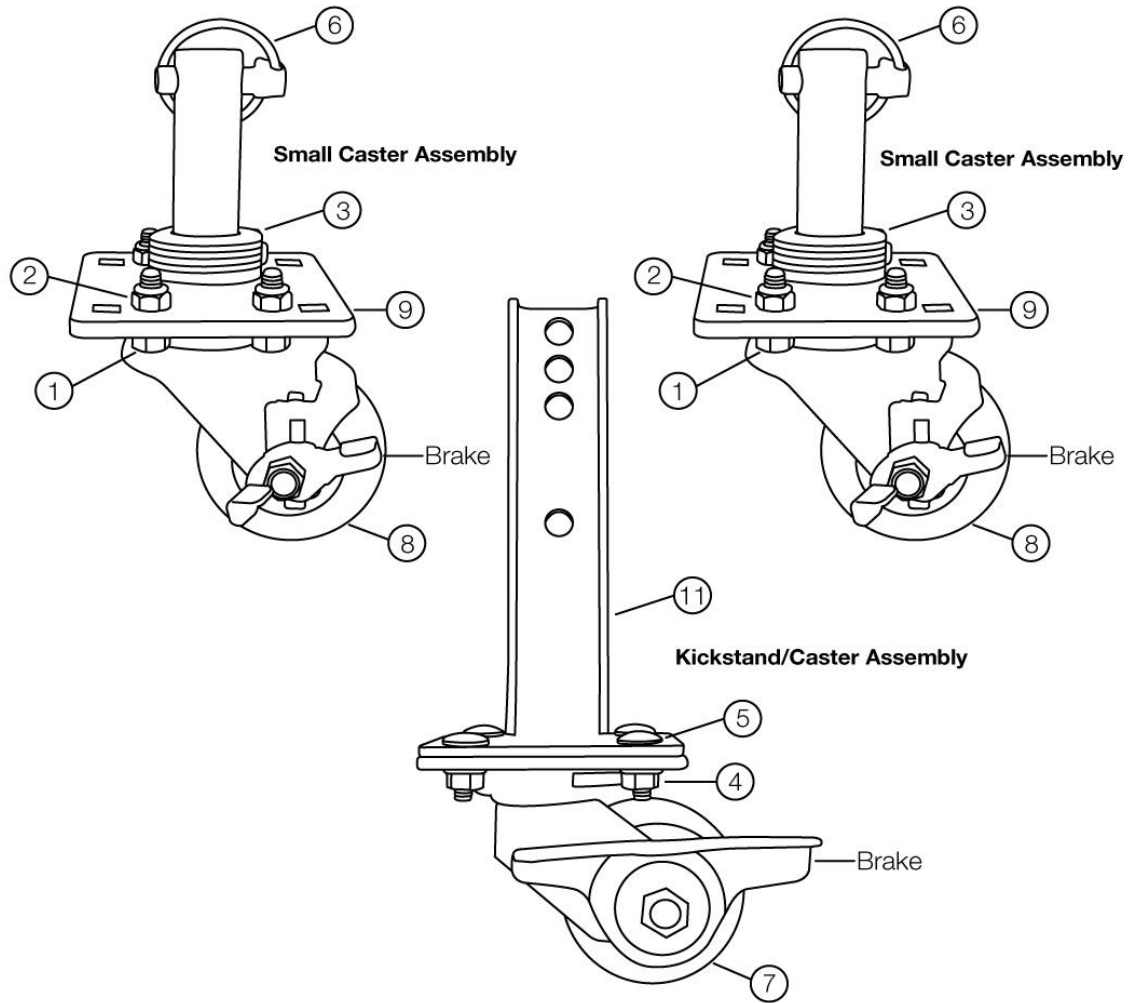
Covering Plow Model:  
6'6" UTV Power V XT

**Caster Kit, DXT V-Blade  
Installation Instructions**

**Kit Number:  
MSC01141**

Covering Plow Models:  
8'2", 9'2" Power V DXT

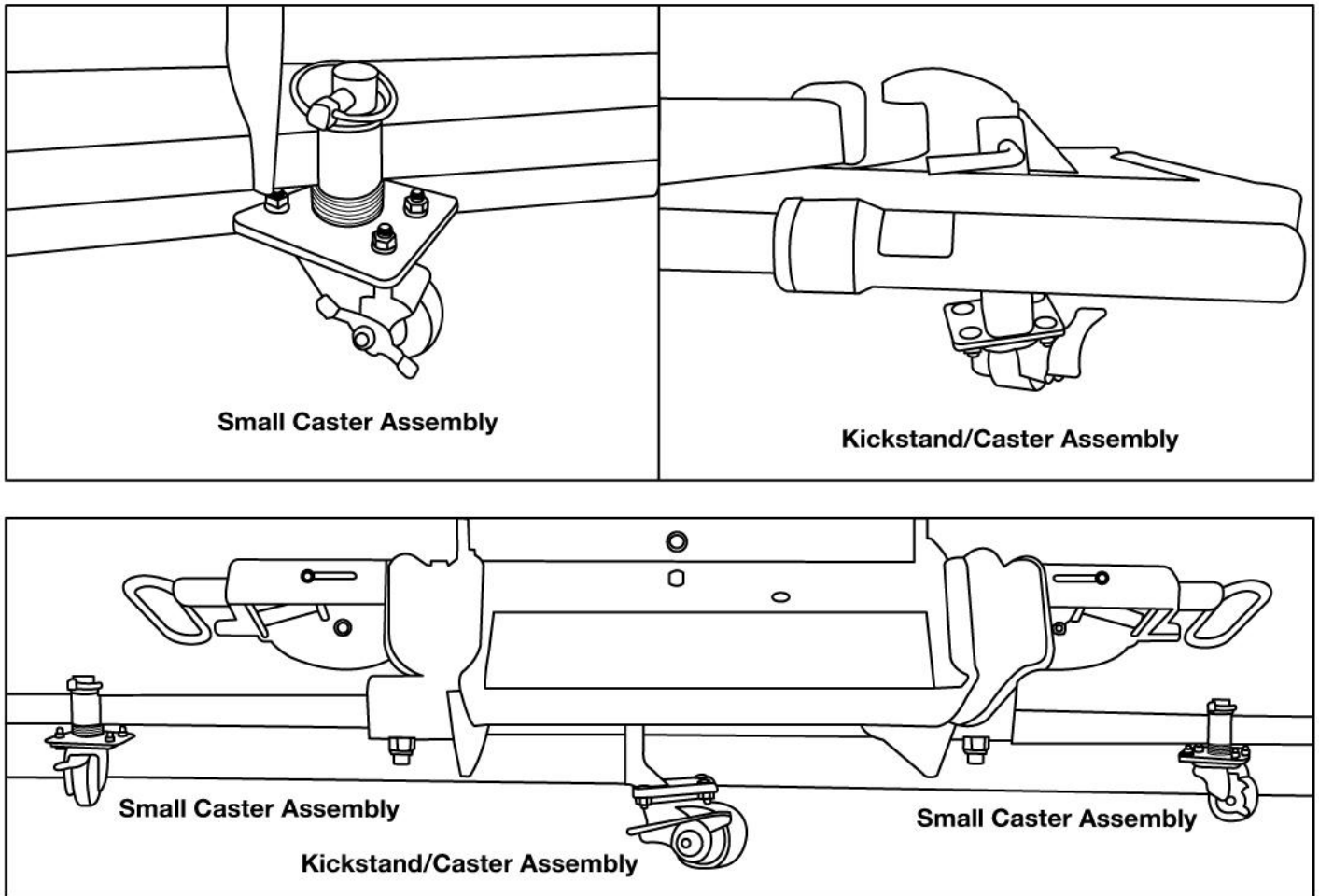
**STB CASTER KIT MSC09215- ASSEMBLE AS SHOWN  
HTX/SPORT CASTER KIT MSC09249- ASSEMBLE AS SHOWN**



**Figure 1.** Caster Kits, Straight Blade Casters Shown Assembled– Note: extra hardware included

ITEM #	QUANTITY	PART #	DESCRIPTION
1	12	HDW01713	HHCS,5/16-18X1,NC,GR5,YZN
2	12	HDW01714	NUT,5/16-18,NYL INS,YZN
3	30	HDW01814	WASHER,FLAT,1.06X1.75X.12,YZN
4	8	HDW07730	NUT,3/8-16,SPIN L/N,EPOXY PATCH,YZN
5	8	HDW09217	BOLT,CARR,3/8-16X1,GR5, YZN
6	2	MSC01503	PIN,QUICK,7/16"
7	1	MSC09218	CASTER,LARGE,3.25"
8	2	MSC09219	CASTER,SMALL,3"
9	2	MSC09220	CASTER BASE
10	1	MSC09223	MANUAL,CASTER KIT (NOT SHOWN)
11	1	STB09349	KICKSTAND,CASTER LEG,STB (09215 SHOWN)
	1	STB09445	KICKSTAND,CASTER LEG, HTX/SPORT (09249)

**STB CASTER KIT MSC09215 INSTALLED  
HTX/SPORT CASTER KIT MSC09249 INSTALLED**



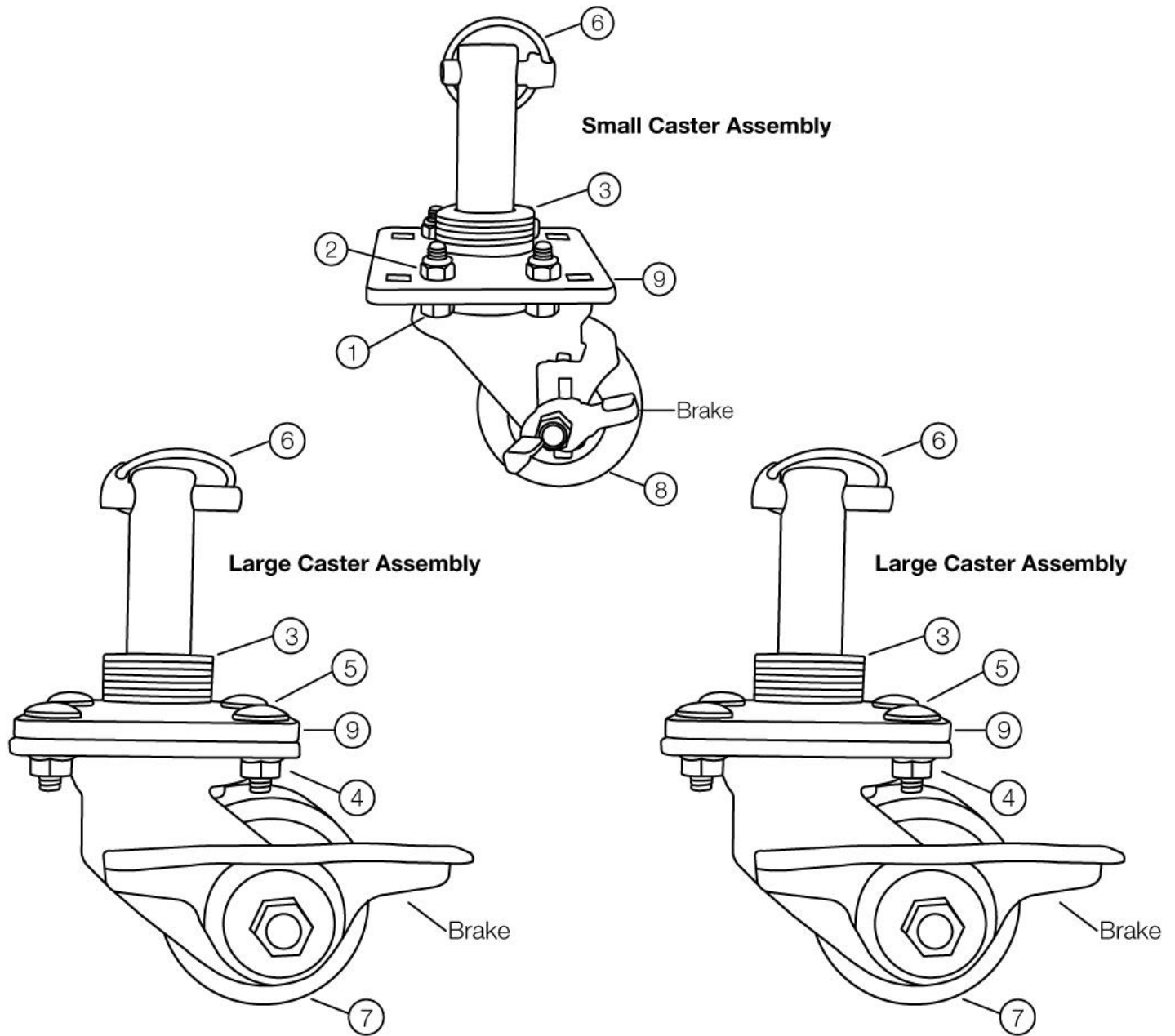
**Figure 2.** Caster Kits, STB Casters Shown Installed on a STB Note: Sport Duty need shoe brackets

**⚠ WARNING**

Serious injury or death can result if you do not follow these instructions and procedures.

1. With the STB plow on truck and after casters are all assembled as shown in Fig.1, begin by raising the plow fully. Add **two safety jack stands** under plow's cutting edge for safety.
2. Remove any plow shoes and store. Install small 3" caster assemblies in both shoe holders as shown in Fig. 2 upper left view (adjust washers as needed above/ below shoe holder). Be sure to lock them in with the quick pin.
3. Remove existing kick stand and insert the new caster kickstand with caster in its place. Be sure the new kick stand is then raised to max height and locked into place with existing spring loaded pin.
4. Remove the **safety jack stands**, and lower plow onto a level hard surface. Next lower the kickstand caster assembly until caster is resting on a level hard surface. Be sure spring loaded pin locks into appropriate hole.
5. With plow controller in float, remove plow and back truck away. You can now push plow to desired location. All casters have a locking brake. Step down on brake(s) to set as needed.
6. Reverse procedure when taking caster assemblies off. Be sure to use **safety jack stands**.

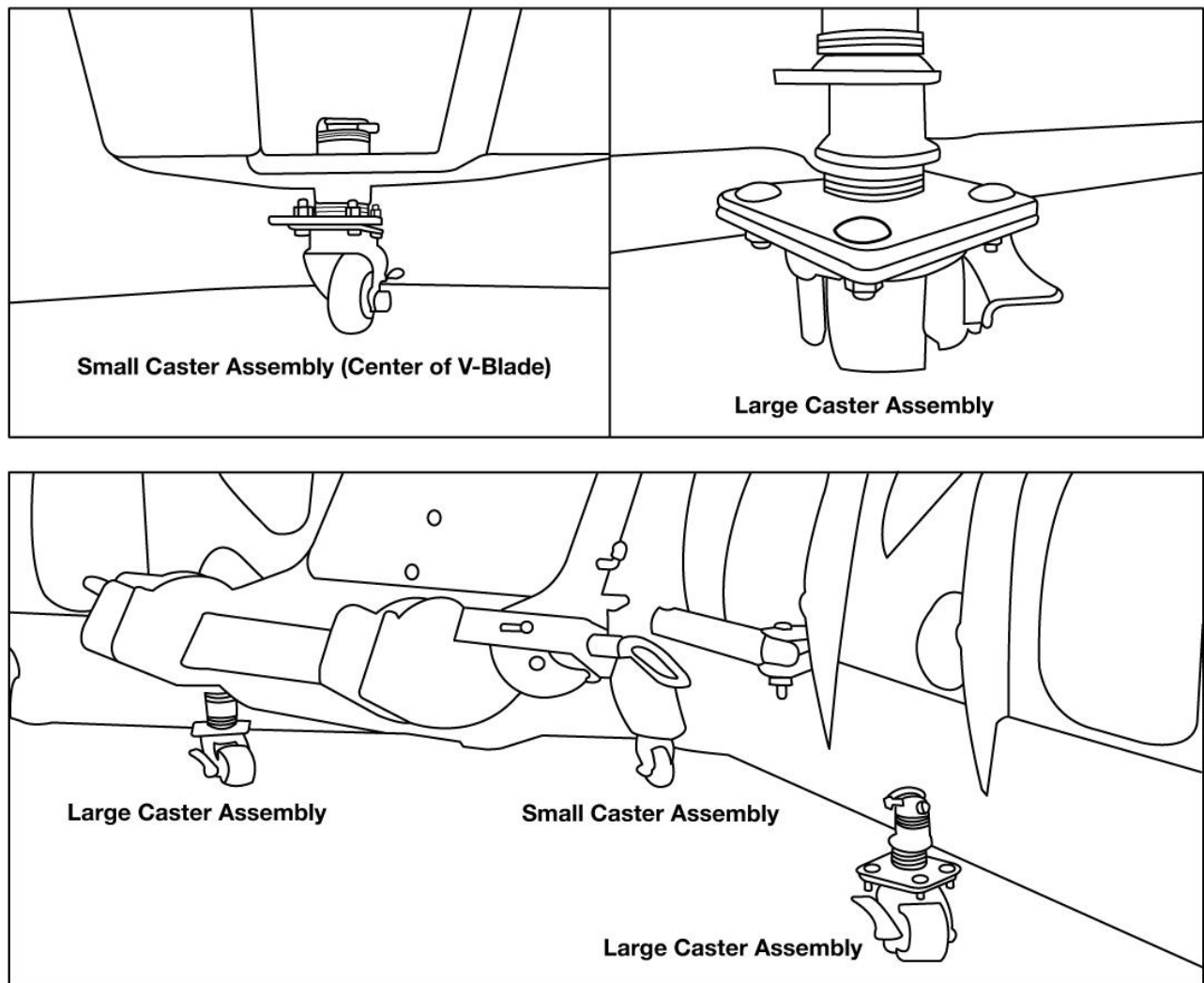
**V-BLADE CASTER KIT MSC09216- ASSEMBLE AS SHOWN**



**Figure 1.** Caster Kit, V-Blade Casters Shown Assembled – Note: extra hardware included

ITEM #	QUANTITY	PART #	DESCRIPTION
1	12	HDW01713	HHCS,5/16-18X1,NC,GR5,YZN
2	12	HDW01714	NUT,5/16-18,NYL INS,YZN
3	30	HDW01814	WASHER,FLAT,1.06X1.75X.12,YZN
4	12	HDW07730	NUT,3/8-16,SPIN L/N,EPOXY PATCH,YZN
5	12	HDW09217	BOLT,CARR,3/8-16X1,GR5, YZN
6	3	MSC01503	PIN,QUICK,7/16"
7	2	MSC09218	CASTER,LARGE,3.25"
8	1	MSC09219	CASTER,SMALL,3"
9	3	MSC09220	CASTER BASE
10	1	MSC09223	MANUAL,CASTER KIT (NOT SHOWN)

## V-BLADE CASTER KIT MSC09216 INSTALLED



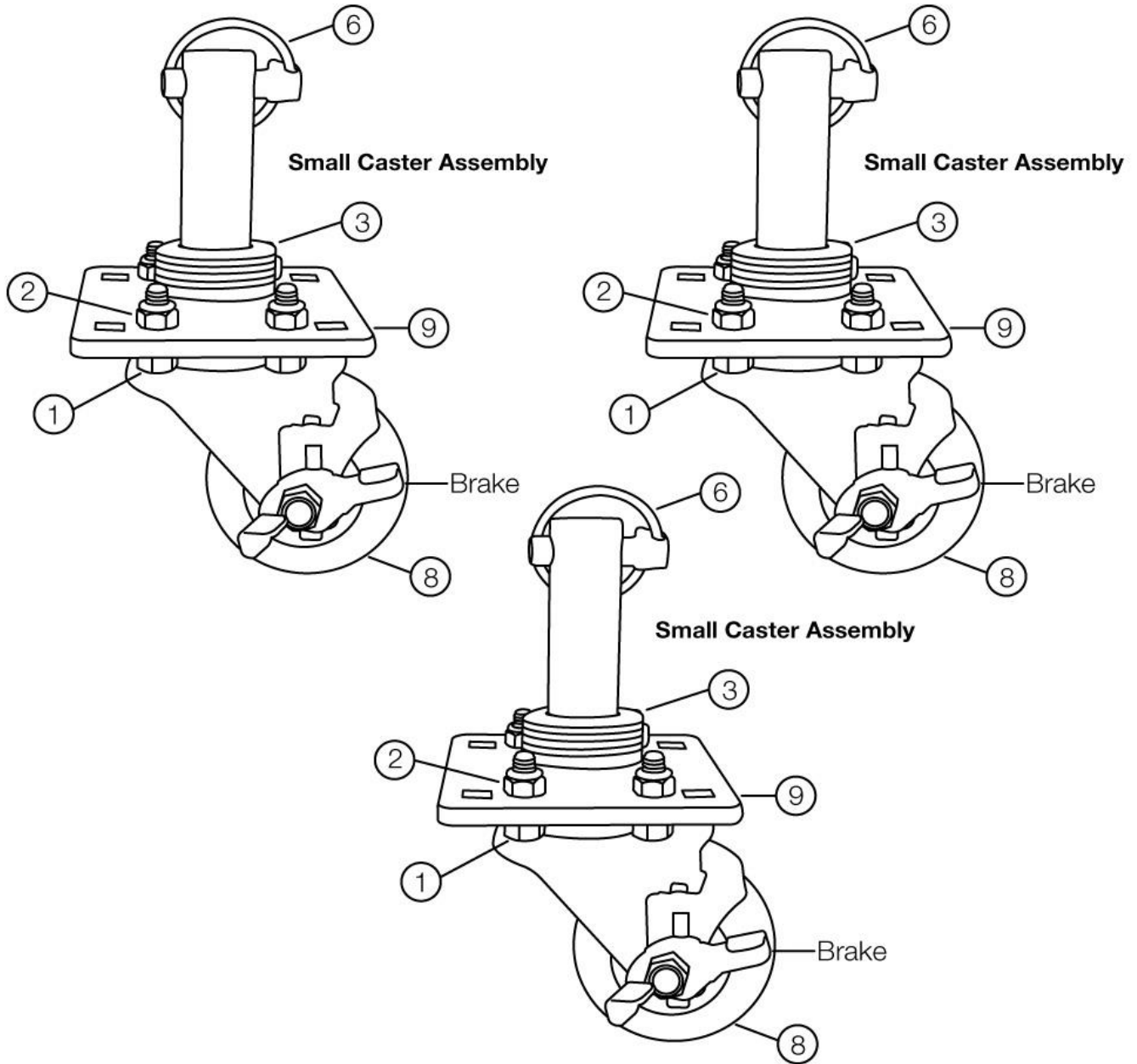
**Figure 2.** Caster Kit, V-Blade Casters Shown Installed on a V-Blade

### **⚠ WARNING**

Serious injury or death can result if you do not follow these instructions and procedures.

1. With the V-Blade plow on truck and after casters are all assembled as shown in Fig.1, begin by raising the V-plow fully. Add **two safety jack stands** under plow's cutting edge for safety.
2. Remove any plow shoes and store. Install the two large 3.25" caster assemblies in both shoe holders as shown in Fig. 2 upper right view (adjust washers as needed above/ below shoe holder). Be sure to lock them in with the quick pin.
3. Next using the small 3" caster assembly, install into center shoe holder as shown in Fig. 2 upper left view (adjust washers as needed above/ below shoe holder). Be sure to lock them in with the quick pin.
4. Remove the **safety jack stands**, lower plow in the V-position onto a level hard surface.
5. With plow controller in float, remove plow and back away. You can now push plow to desired location. All casters have a locking brake. Step down on brake(s) to set as needed.
6. Reverse procedure when taking caster assemblies off. Be sure to use **safety jack stands**.

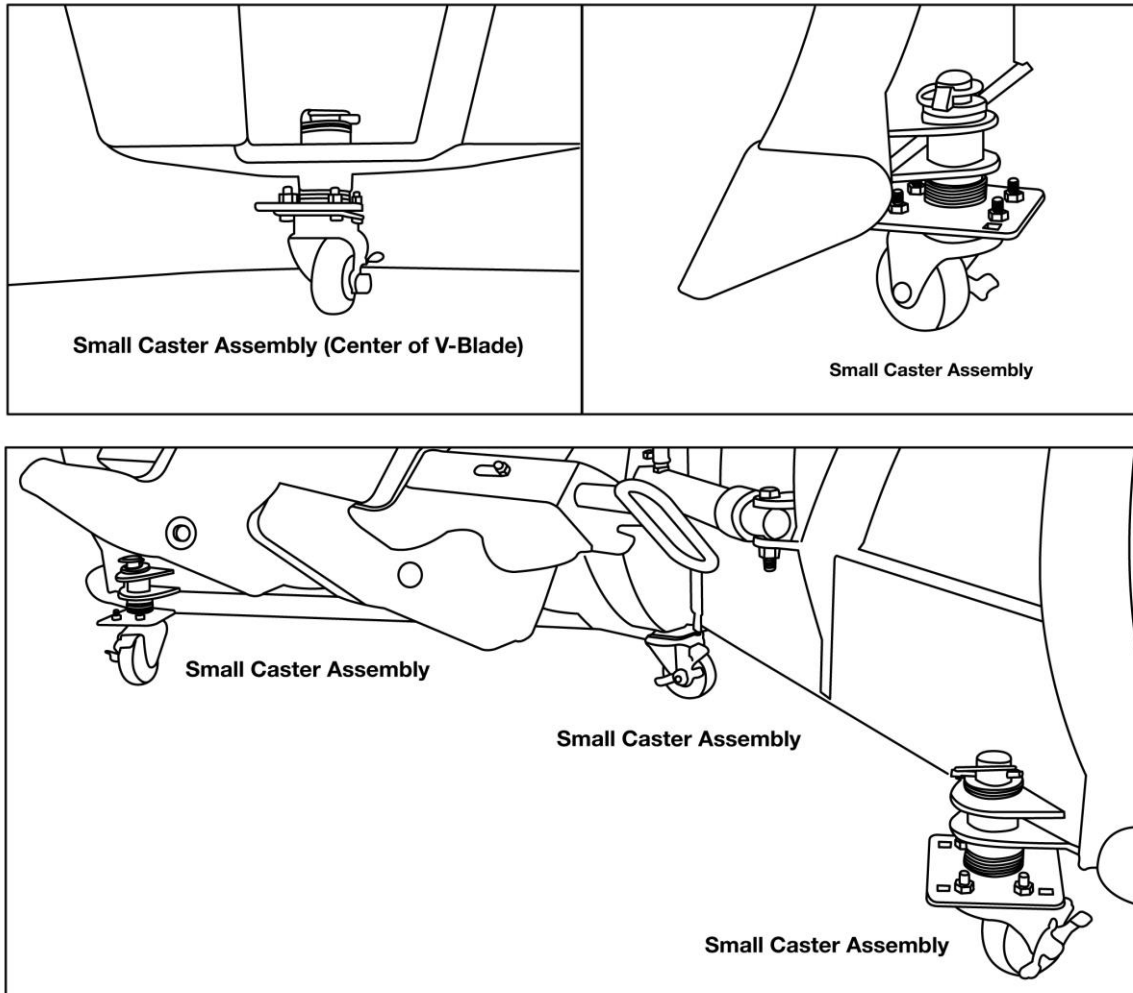
**UTV V-BLADE CASTER KIT MSC09235- ASSEMBLE AS SHOWN**



**Figure 3.** Caster Kit, UTV V-Blade Casters Shown Assembled – Note: extra hardware included

ITEM #	QUANTITY	PART #	DESCRIPTION
1	12	HDW01713	HHCS,5/16-18X1,NC,GR5,YZN
2	12	HDW01714	NUT,5/16-18,NYL INS,YZN
3	30	HDW01814	WASHER,FLAT,1.06X1.75X.12,YZN
4	12	HDW07730	NUT,3/8-16,SPIN L/N,EPOXY PATCH,YZN
5	12	HDW09217	BOLT,CARR,3/8-16X1,GR5, YZN
6	3	MSC01503	PIN,QUICK,7/16"
7			
8	3	MSC09219	CASTER,SMALL,3"
9	3	MSC09220	CASTER BASE
10	1	MSC09223	MANUAL,CASTER KIT (NOT SHOWN)

## UTV V-BLADE CASTER KIT MSC09235 INSTALLED



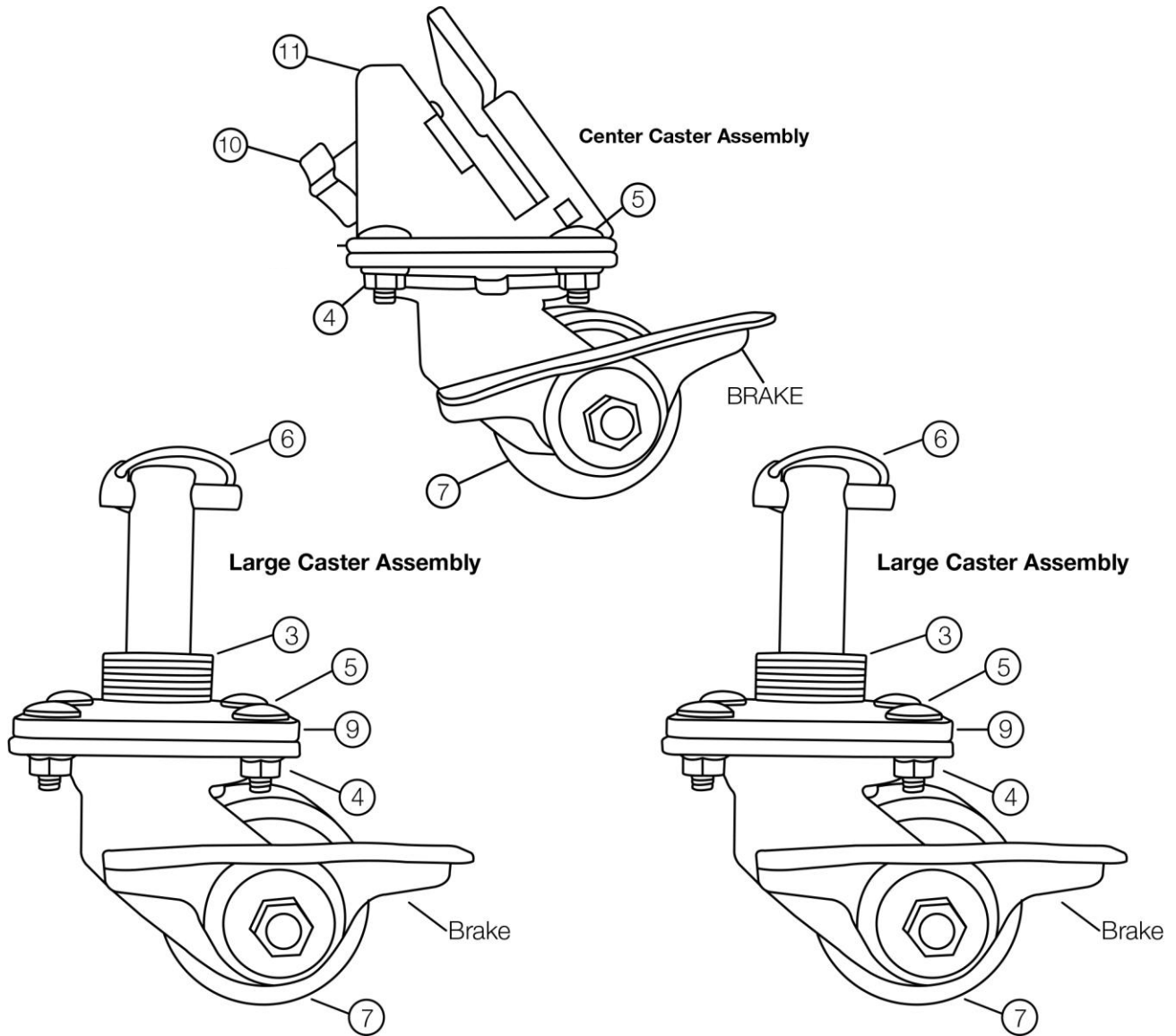
**Figure 4.** Caster Kit, UTV V-Blade Casters Shown Installed on a UTV Power V XT Blade

### **! WARNING**

Serious injury or death can result if you do not follow these instructions and procedures.

1. With the V-Blade plow on the UTV and after casters are all assembled as shown in Fig.3, begin by raising the V-plow fully. Add **two safety jack stands** under plow's cutting edge for safety.
2. Remove any plow shoes and store. Install the three small 3" caster assemblies in both shoe holders and the center section as shown in Fig. 4 upper views (adjust washers as needed above/ below shoe holder and center section bushing). Be sure to lock them in with the quick pin.
3. Remove the **safety jack stands**, lower plow in the V-position onto a level hard surface.
4. With plow controller in float, remove plow and back away. You can now push plow to desired location. All casters have a locking brake. Step down on brake(s) to set as needed.
5. Reverse procedure when taking caster assemblies off. Be sure to use **safety jack stands**.

## DXT V-BLADE CASTER KIT MSC01141 - ASSEMBLE AS SHOWN

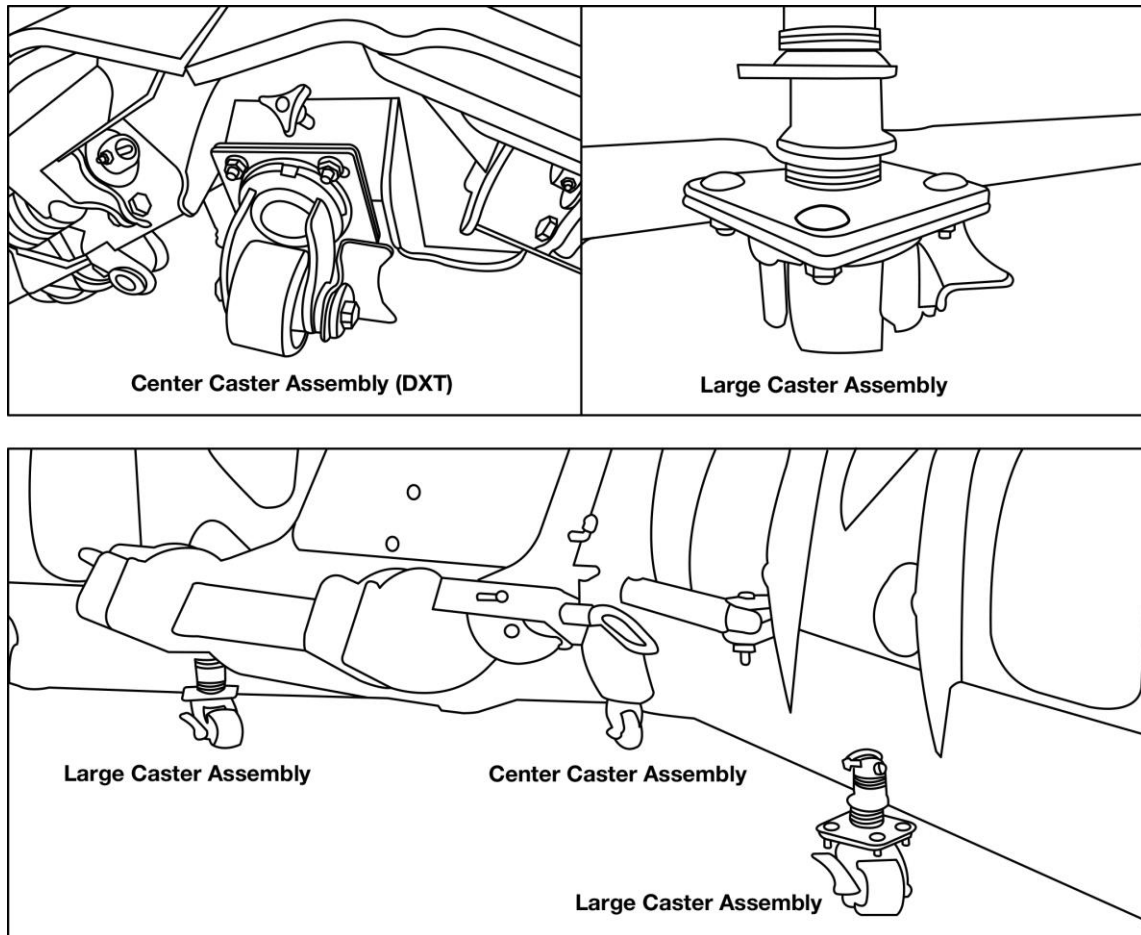


**Figure 5.** Caster Kit, DXT V-Blade Casters Shown Assembled – Note: extra hardware included

ITEM #	QUANTITY	PART #	DESCRIPTION
1	12	HDW01713	HHCS,5/16-18X1,NC,GR5,YZN
2	12	HDW01714	NUT,5/16-18,NYL INS,YZN
3	30	HDW01814	WASHER,FLAT,1.06X1.75X.12,YZN
4	12	HDW07730	NUT,3/8-16,SPIN L/N,EPOXY PATCH,YZN
5	12	HDW09217	BOLT,CARR,3/8-16X1,GR5, YZN
6	2	MSC01503	PIN,QUICK,7/16"
7	3	MSC09218	CASTER,LARGE,3.25"
8			
9	2	MSC09220	CASTER BASE
10	1	MSC01146	PLASTIC KNOB, 3/8-16 X 1.5
11	1	MSC01142	WELDMENT,CASTER,CENTER,DXT
12	1	MSC09223	MANUAL,CASTER KIT (NOT SHOWN)



## DXT V-BLADE CASTER KIT MSC01141 INSTALLED



**Figure 6.** Caster Kit, DXT V-Blade Casters Shown Installed on a Power V DXT Blade

### **! WARNING**

Serious injury or death can result if you do not follow these instructions and procedures.

1. With the V-Blade plow on the truck and after casters are all assembled as shown in Fig.5, begin by raising the V-plow fully. Add **two safety jack stands** under plow's cutting edge for safety.
2. Remove any plow shoes and store. Install the two large 3.25" caster assemblies in both rear shoe holders as shown in Fig. 6 (adjust washers as needed above/ below shoe holder). Be sure to lock them in with the quick pin. Partially install the **plastic knob** on the center caster bracket. Slide the Large center caster onto the plow center bottom plate as shown in Fig. 6 with the plastic knob facing forward. Tighten the plastic knob snug to secure the caster to the plow.
3. Remove the **safety jack stands**, lower plow in the V-position onto a level hard surface. **Never lower in the scoop position with the casters installed.**
4. With plow controller in float, remove plow and back away. You can now push plow to desired location. All casters have a locking brake. Step down on brake(s) to set as needed.
5. Reverse procedure when taking caster assemblies off. Apply caster brakes and take caution when driving up to a plow on casters. Be sure to use **safety jack stands**.