



A Division of Northern Star Industries, Inc.
P.O. BOX 787, IRON MOUNTAIN, MICHIGAN 49801
www.bosspow.com (906) 774-0440

TO: ALL BOSS DISTRIBUTORS

DATE: 12/15/10

SUBJECT: FAQ18

The following page is FAQ18 from The BOSS Snowplow Technical Support. Please make sure this FAQ is distributed to all employees and sub-distributors who sell or service The BOSS Snowplow.

We have distributed this FAQ to all registered sub-distributors with dedicated fax lines or e-mail addresses.

Thank you,

BOSS Snowplow Technical Support



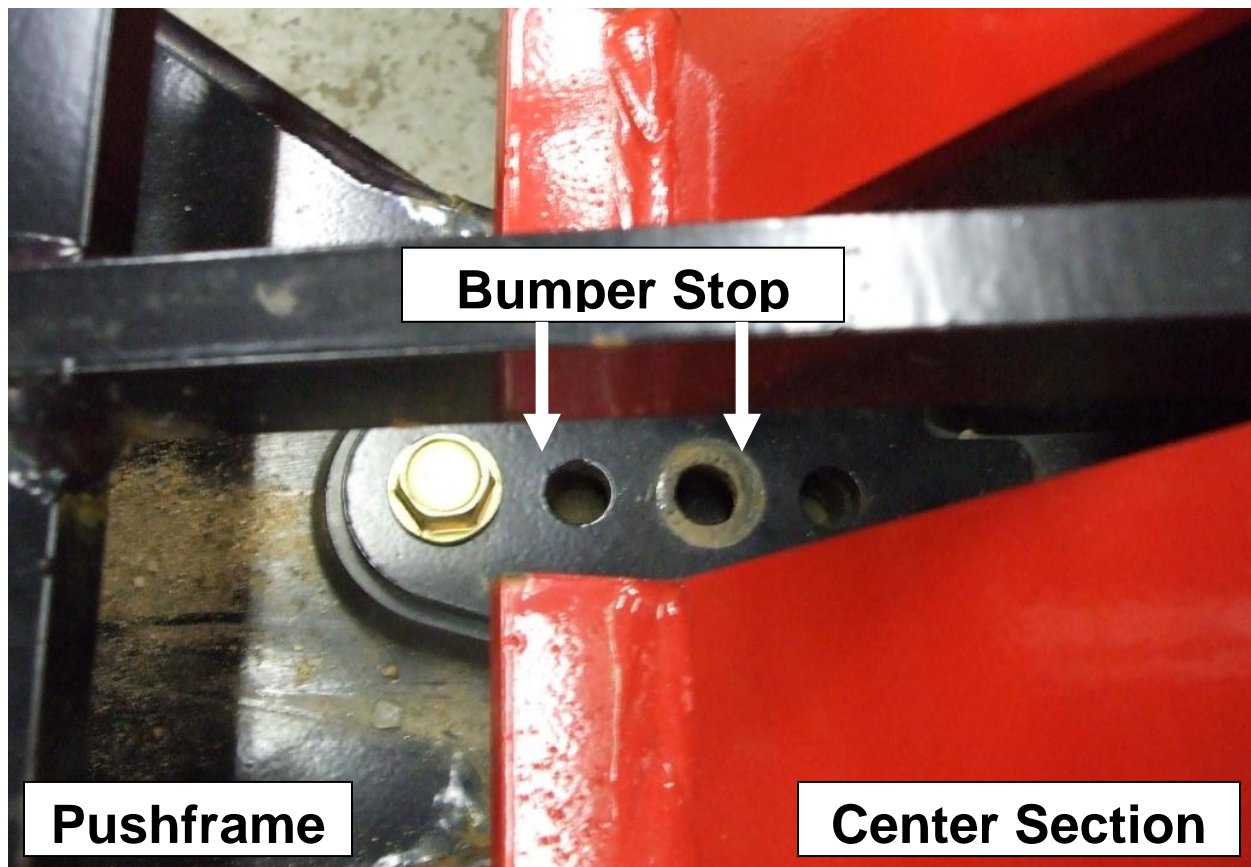
BOSS PRODUCTS
NORTH HWY. US2
P.O. BOX 787
IRON MOUNTAIN, MI 49801

Fax: (906) 779-4218 Phone: (906) 776-3500

FAQ18
12/15/10

QUESTION: How do I adjust my RT3 Power-V so that the cutting edge sits level with the ground?

SOLUTION: This is done by adjusting the Bumper Stop, which is located where the Pushframe enters the back of the Center Section. There are two sets of instructions attached. One set describes how to level the cutting edge if the center is too high. The other set describes how to level if the wing tips are up.



If you have any concerns or questions about this FAQ please feel free to contact BOSS Technical Support at (906) 776-3500.



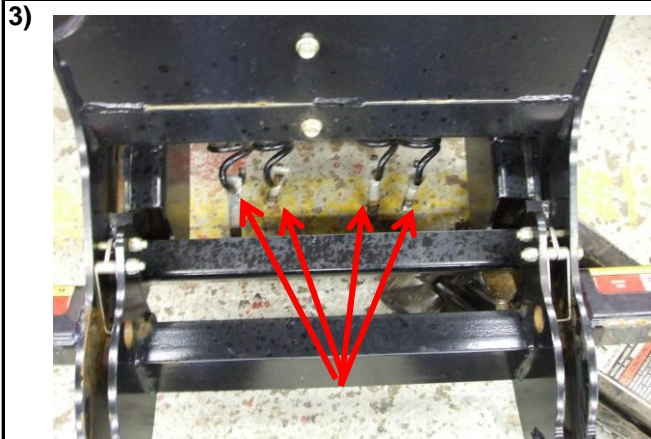
Bumper Stop Adjustment CENTER OF PLOW TOO HIGH



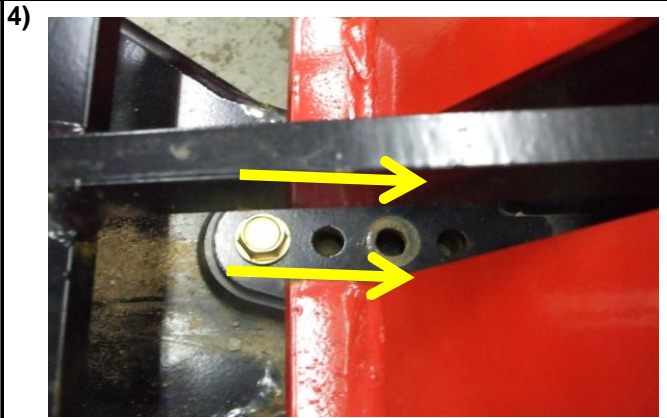
If center of plow is not level with ground, adjust bumper stop.



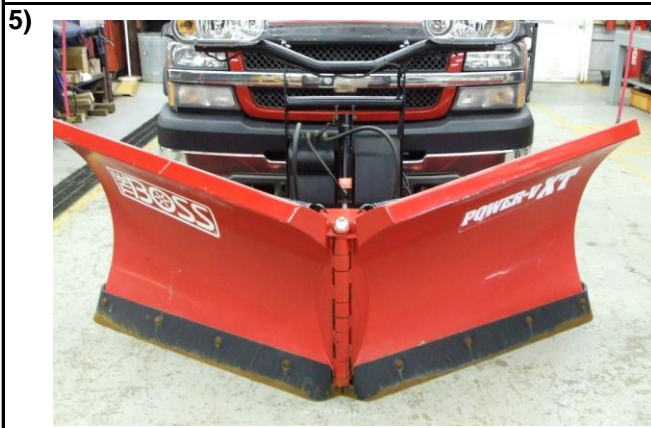
To adjust bumper stop, use floor jack to support coupler.



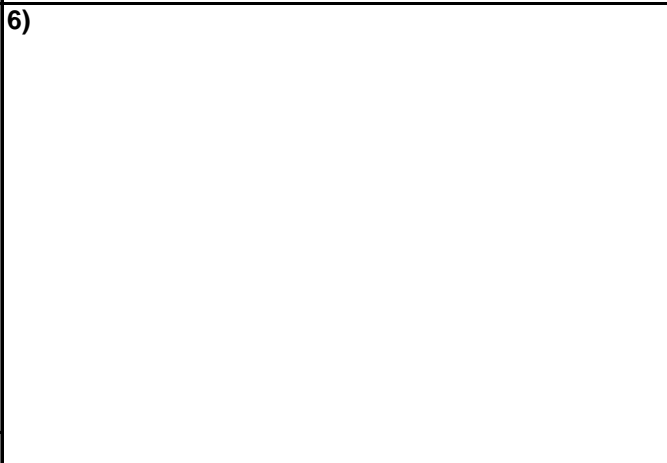
Loosen the four trip springs. Lower jack to floor to release tension on bumper stop.



Move bumper stop forward (one hole at a time) into center section to bring front of plow down until level.



Tighten up springs. Plow should be level to ground. If not, repeat step 4 by moving forward another hole.





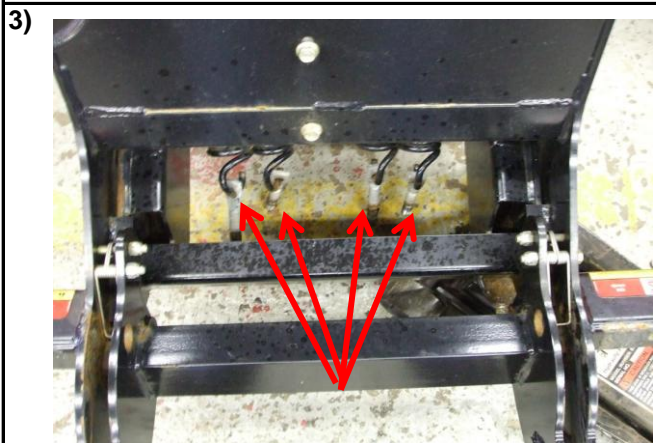
Bumper Stop Adjustment WING TIPS UP



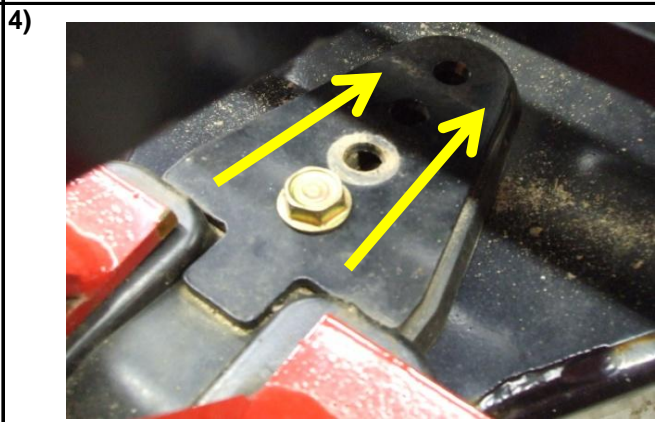
If wings of plow are not level with ground, adjust bumper stop.



To adjust bumper stop, use floor jack to support coupler.



Loosen the four trip springs. Lower jack to floor to release tension on bumper stop.



Move bumper stop towards truck - away from center section (one hole at a time) to bring wing tips down until level.



Tighten up springs. Plow should be level to ground. If not, repeat step 4 by moving one hole at a time.

