

CENTRAL HYDRAULICS SETUP FOR BOSS SNOWPLOW

The BOSS Snowplow can be operated using a central hydraulic supply. Boss offers all snowplows without hydraulics as an option for those who choose to run central hydraulics.

3rd Party Sandwich Valves

Once you have purchased a Boss Snowplow without Hydraulics, the valving for the snowplow would then have to be purchased from an outside source. Sandwich valves, which bolt directly to the trucks existing hydraulic controls, may be purchased from 3rd party vendors. These are typically mechanically actuated valves, controlled by a hand lever.

Power V-Blade snowplows require three sandwich valves: Raise/Lower/Float, Right In/Right Out, and Left In/Left Out. Both wing valves must contain a pressure relief set at 2800 psi maximum porting back to the tank reservoir.

Straight Blade snowplows require two sandwich valves: Raise/Lower/Float and Angle Left/Angle Right. Both wings must contain a cross over relief valve set at 3500psi porting fluid from one angling cylinder to the other.

The Raise/Lower/Float valve should be 3 position with detent in the Float position, momentary in the Raise and Neutral positions. Three quick disconnects will be required between the plow and the vehicle for the right wing, left wing, and lift cylinders.

The headlight system will be wired into the truck the same as a standard snowplow. Only the headlight wires will be used, several wires will not be used. The plow will have one large black connector at the bumper that will need to be unplugged when the plow is detached.

SmartHitch™ and SmartHitch 2™ are not available with central hydraulics.

	Central Hydraulics
Connections at Bumper	3 hydraulic quick couplings 1 electrical harness plug
Valve Actuation	Mechanical
Headlight Wiring	Standard Plow Harness – Headlight Adapters may be needed depending on vehicle – See Headlight Adapter Chart.
Hydraulic Circuit	Requires knowledgeable Technician to specify and install correct valves. Valves are purchased from a third party.
Controls	Customer Supplied
Plow Box Part No.	MSC09978 Power V-Blade STB04647 Super Duty Str. Blade MSC09798 10' Power V-Blade STB07971 10' Straight Blade
Controls Kit Part No.	None Required

NOTE: The hydraulic system pressure operating the plow should be 2500-3000 psi maximum. The flow rate should be 2-4 gpm.

Central Hydraulic Set-Up (Power-V Blade Assembly Shown)

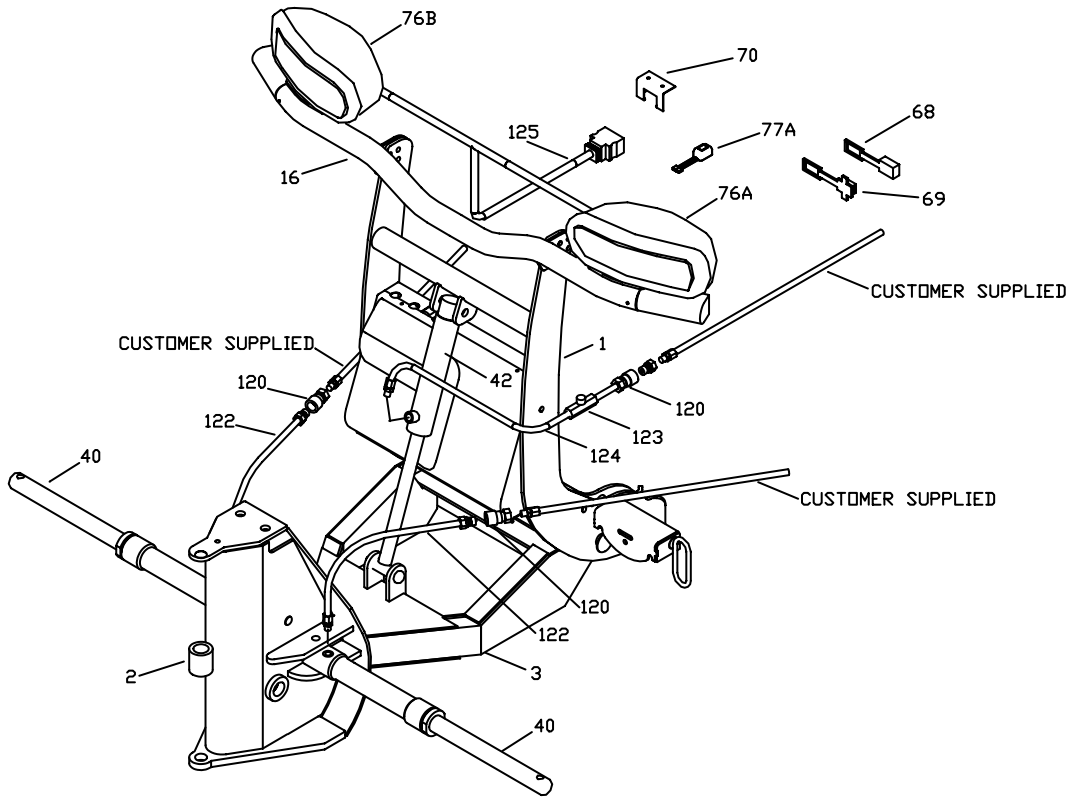


Figure 1. Method 1 Central Hydraulic Setup

G10198

Reference Number	Part Number	Description
1	CPA04689	COUPLER ASSY W/PINS ONLY,SPR DTY,RT3,SH2
2	CHA09716	CENTER SECTION,V RT3
3	TFR09708	PUSHFRAME ASSY RT3 V, 06+
16	LBA04629	LIGHTBAR ASSEMBLY,COUPLER SH2
40	HYD09731	CYLINDER,ANGLE V 10"X1-1/2"SA,COMMON 06+
42	HYD07013	CYLINDER,LIFT RT3
76A	MSC04731	HEADLIGHT SMARTLIGHT DR
76B	MSC04732	HEADLIGHT SMARTLIGHT PS
122	HYD07042	HOSE, 3/8"X42", 1/4"MPX3/8"MP
MSC04693 – Central Hydraulics Component Kit. Includes some of the following commonly ordered parts:		
68	HYD07017	DUST CAP,1/4"
69	HYD01657	DUST PLUG,1/4"
70	MSC03813	CONTROL HARNESS,MOUNT BRKT 95&UP
77A	MSC04747	TOGGLE SWITCH,SMARTLIGHT
120	HYD01653/HYD01654	QUICK DIS,MALE,1/4"/QUICK DIS,FEMALE,1/4"
123	HYD01624	VALVE,FLOW CONTROL(Use HYD01687)
124	HYD09926	HOSE, 1/4"X54",3/8"MPX1/4"MP
125	MSC04317	WIRING HARNESS,13 PIN,PLOW SIDE

Note: The parts list above is a partial list of all components and pertains to the 7'6", 8'2", and 9'2" Power V-Blade. Reference numbers of standard parts correspond to the current reference numbers in the Assembly Drawing found in the RT3 Power V-Blade Owners Manuals.