





**BOSSPLOW.COM**


See how BOSS continues to back you up.  
Get more info, watch videos, find a dealer or chat live.

Call 800-286-4155  
Email [sales@bossplow.com](mailto:sales@bossplow.com)



 Ask your dealer or visit [bossplow.com](http://bossplow.com) to explore the complete line-up of BOSS Snowplows, Box Plows, ATV & UTV Snowplows and Spreader products.

 Exclusive to BOSS owners, joining this community gives you a profile page, a free gift and access to special offers and information on BOSS products and services.

 SnowCare for Troops is a nationwide outreach program that performs free snow removal for the families of men and women serving overseas, and disabled veterans.



**BOSS PRODUCTS**  
2010 THE BOSS WAY  
P.O. BOX 787  
IRON MOUNTAIN, MI 49801-0787

BOSS SNOWFLOW PRODUCTS  
ARE DESIGNED AND MANUFACTURED  
IN AN APPROVED ISO 9001:2008  
REGISTERED FACILITY.

Patents: [www.tfcopats.com](http://www.tfcopats.com)  
©2015 BOSS PRODUCTS. ALL RIGHTS RESERVED.  
PRINTED IN U.S.A. FORM #450-2015  
Hardox is a registered trademark of SSAB Technology. The "F" logo is a registered trademark/service mark of Facebook, Inc. The Twitter bird is a registered trademark/service mark of Twitter, Inc. The YouTube and Google+ logos are registered trademarks/service marks of Google Inc. The "in" logo is a registered service mark of LinkedIn Corporation. The Instagram logo is a registered trademark/service mark of Instagram, LLC. The Blogger logo is a registered service mark of Google Inc. The Advantage International Registrar logo is a trademark of Advantage International Registrar, Inc. All other trademarks belong to BOSS Snowplow.



**BOSS**  
TRUCK PLOWS  
& ACCESSORIES  
**2015**





# TABLE OF CONTENTS

---

**3 SMART TECHNOLOGY**

**5 SL3 L.E.D. WITH ICE SHIELD TECHNOLOGY™**

**7 DXT**

**9 XT**

**11 STRAIGHT-BLADES**

**13 TRIP-EDGE SNOWPLOWS**

**15 HTX**

**17 MUNICIPAL PLOWS**

**19 ACCESSORIES**

**23 WHAT YOU GET**

**24 SPECIFICATIONS**

**27 BOSS EXTENDED FAMILY**

**29 GET CONNECTED WITH BOSS**

It all started in a town called Iron Mountain, MI, over 30 years ago, when BOSS began its journey. Driven by an understanding of the duties and responsibilities of their customers, BOSS engineers professional-grade snow- and ice-removal equipment with one goal — to help you restore order to the towns, cities and communities you serve. Incorporating state-of-the-art design and manufacturing techniques, BOSS has set the industry benchmark, producing the highest-quality, most durable and efficient snowplows and spreaders on the planet. And with a philosophy of listening to and answering the needs of the professional, BOSS will never stop innovating its products, technologies or services. With over 30 years of proven experience, you can continue to expect that BOSS will always be there to back you up.







# SMART DESIGN, STRONG PERFORMANCE

When winter's at its worst, the job calls for more than muscle, which is why BOSS Smart Technology provides you with a complete system to make snow and ice removal fast, easy and efficient. With a variety of tripping technologies, intuitive controls, and headlights designed for maximum visibility, BOSS has what today's professionals need to take on winter and restore order.



## A NEW ERA IN PLOW LIGHTING

The optional SL3 light kit\* features Ice Shield Technology™, preventing ice buildup on the screen, and is 100% LED, projecting light wider, brighter and farther than standard halogen systems.



\*Kit available October 2015. See dealer for details.



## ELIMINATE THE 13-PIN CONNECTOR

The optional Next Generation Electrical (NGE) system eliminates the connector pins for a cleaner appearance, easier attachment and increased reliability.



## UNIVERSAL UNDERCARRIAGE

A universal undercarriage ensures that BOSS plows\* can be quickly and easily switched from truck to truck.

\*Excludes HTX, 10' plows and Sport-Duty plows.



## SUPERIOR CONTROL OPTIONS

Advanced control technology combined with ergonomic control features and large backlit buttons make BOSS controls highly intuitive and easy to use. Optional Pistol Grip controller for use with NGE only.



## STRENGTH-TO-WEIGHT

BOSS designs maximum snowplow performance and strength in packages that are lighter than competitive options.



## SEE THROUGH THE STORM

The standard SL2 system enhances visibility during tough, nighttime plowing conditions.



## MADE TO LAST

Delivers superior corrosion protection and a long-lasting, high-gloss shine.



## PATENTED SNOW CATCHER

A proven snow catcher in the center section on every BOSS V-Plow ensures that no snow lines are left behind.



## ADVANCED CUTTING EDGES/BASE ANGLES

Cutting Edges and Base Angles feature HARDOX® wear plate, making it one of the longest-lasting cutting edges in the industry. (V-Plows only)



## DIAGONAL CROSS-BRACING

All BOSS snowplows use a diagonal cross-bracing design, which helps to reinforce the blade structure, reducing blade twisting and increasing strength overall.



## EASY TO ATTACH

Flip, plug, click. The three-step attachment process makes it easy to switch between plows.

## TRIPPING TECHNOLOGY

Only BOSS offers three tripping technologies: true dual-trip, full-trip and trip-edge.

## CHAINLESS LIFT SYSTEM

BOSS snowplows use a chainless, hydraulic lift system, which greatly reduces snowplow bounce and provides full float capabilities.



Get zero down, no payments and no interest for 6 months.\*

\*Commercial Use Customers Only. Ask your BOSS Dealer or visit [bossplow.com/financing](http://bossplow.com/financing) for more details.



# SL3

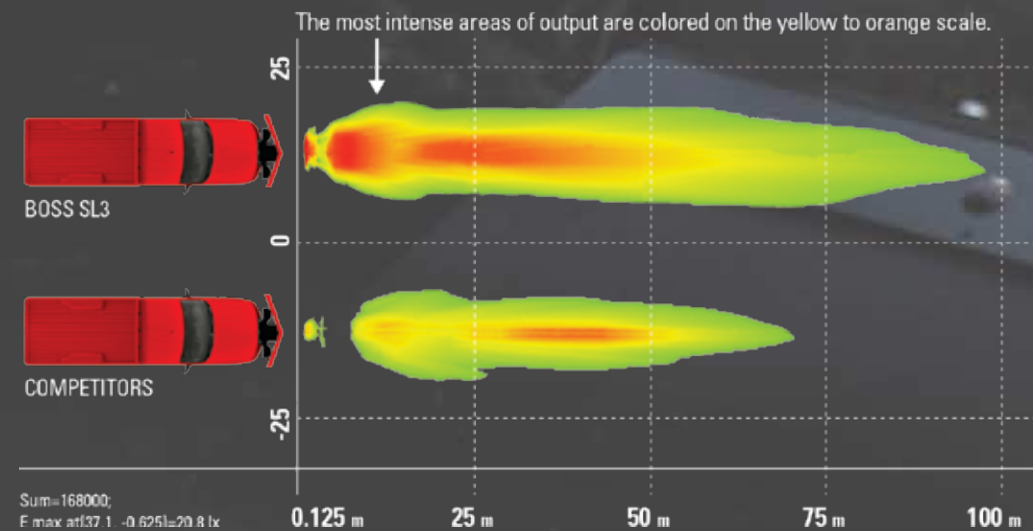
L.E.D. TECHNOLOGY

with Ice Shield Technology™

## INNOVATIONS BUILT WITH YOU IN MIND

BOSS knows the importance of listening to its customers and improving the technologies that make the lives of snowplow professionals safer, easier and more productive. The optional SL3 lighting kit\* featuring Ice Shield Technology™ uses heat to prevent snow and ice build-up on the lens and produces a light beam that shines farther and wider than traditional halogen systems. It's another innovation from BOSS that's built to back you up.

\*Kit available October 2015. See dealer for details.



Integrated Turn Signal

Tough, durable LED bulbs feature life expectancy of up to 8-10 years

BOSS signature, premium look and are 40% smaller than current SmartLight2 lights

Retrofits most BOSS plows using the SmartLight2 headlight system

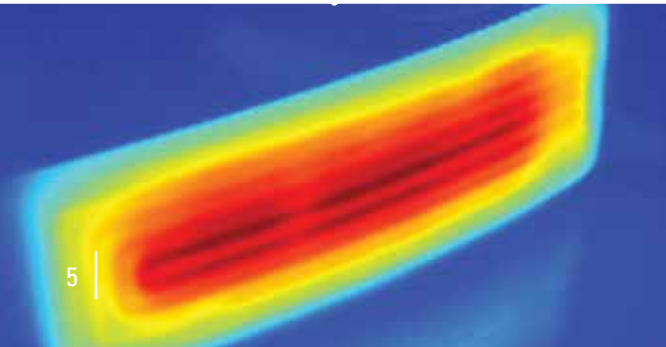
Ultra-efficient LED uses half the amperage of halogen systems

100% DOT-Compliant

> **ICE SHIELD TECHNOLOGY™**  
Integral system utilizes a thermally conductive grid to heat the SL3 lens, preventing ice build-up even in the worst conditions.

> **A MORE PRECISE LIGHT PATTERN**  
Light is concentrated in just the right areas to improve driver visibility while reducing the strain to oncoming traffic. Extra lamps flood the working area with additional light for extreme weather and extended plowing jobs.

SEE IT IN ACTION  
[BOSSPLOW.COM](http://BOSSPLOW.COM)







**SL3**  
L.E.D. TECHNOLOGY  
with  
Ice Shield Technology™

The all-new BOSS SL3 lighting system pumps out nearly double the lighting of standard halogen systems, with a life expectancy of 8 to 10 years. Ice Shield Technology™ heats the lens to prevent ice build-up. For 2015, the SL3 System will be available as an accessory. See BOSS Dealer for details.

# THE MOST FULLY FEATURED V-PLOW ON THE PLANET

- > STEEL 8'2", 9'2", 10'
- > POLY 8'2", 9'2"
- > STAINLESS 8'2", 9'2"

The durable, fully featured BOSS DXTs are the ultimate tool to fight all things snow and ice. Patented dual-trip design enhances plow protection when striking obstacles in any position and uses HARDOX® wear plate to protect against extended wear. Flared wings with an enhanced curl throw snow with maximum efficiency, and the DXT's multiposition plow blade can quickly and easily switch positions to move large amounts of snow. The smooth-running DXT is state of the art for plowing protection — proof that BOSS backs you up.

## STANDARD FEATURES:

- > **Patented Dual-Trip Design** for enhanced plow protection when striking hidden obstacles in any position.
- > **½" X 6" High-Performance Base Angle** built using HARDOX® wear plate to provide extended wear resistance and comes with built-in curb guards and patented snow catcher.
- > **Flared Wings** with enhanced curl to throw snow with maximum efficiency.
- > **Patented Snow Catcher** in the center section is designed to catch snow at the plow's pivot point — so no snow lines are left behind.
- > **Reinforced Moldboard** increases blade rigidity for increased durability.
- > **Heavy-Duty Push Frame And Center Section** for additional strength and reliability.
- > **High-Performance Hydraulic Package** delivers reliability and speed.
- > **SmartLock Cylinders** keep blades straight when backdragging.
- > **Enclosed Hydraulics** protects against corrosion and hydraulic freeze-up.
- > **Chainless Hydraulic Cylinder Lifting System** greatly reduces bounce during transport and provides full float capability.
- > **Two-Year Limited Warranty** protects against material defects for peace of mind.
- > **SmartLight 2** halogen light system for great visibility.

## AVAILABLE UPGRADES:

- > **SL3 Light System** best-in-class, 100% LED lighting spots obstacles before they're a problem.
- > **NGE Pistol Grip Controller** our high-tech, ergonomic control features large, backlit buttons for ease of use.
- > **NGE Control System** eliminates connector pins for a cleaner appearance, easier attachment and increased reliability.



9'2" Stainless Steel Power-V DXT

**HARDOX®**  
WEAR PLATE

Base angle made with HARDOX® wear plate guarantees outstanding resistance to impact and extreme abrasion while delivering maximum service life and enhanced productivity.



9'2" Steel Power-V DXT

A patented and proven snow catcher in the center section of base angle or optional cutting edge on every BOSS V-Plow is specifically designed to catch snow at the plow's pivot point, so no snow lines are left behind.



**Patented Dual-Trip Design** combines Trip-Edge and Full Moldboard Trip technologies in every DXT plow for protection from obstacles in any position, high or low.

QUESTIONS? CHAT LIVE ONLINE.  
**BOSSPLOW.COM**

Plow shown with optional equipment.

STANDARD FEATURES:







# PERFORMANCE-DRIVEN

- **STEEL 7'6", 8'2", 9'2"**  
**POLY 8'2", 9'2"**

The BOSS XT is built to perform with innovated flared blade wings and enhanced curl design that throws snow higher and farther than conventional plows. The super-slick polyethylene surface of the Poly XT keeps snow from sticking. The durable steel plows feature a baked-on powder-coat paint finish with exclusive epoxy-based primer to resist corrosion and outlast the elements. The BOSS XT is just another innovation you can count on.

### STANDARD FEATURES:

- **Full Moldboard Trip Design** helps to prevent plow damage when an obstacle is encountered.
- **1/2" X 6" High-Performance Cutting Edge** built using HARDOX® wear plate to provide extended wear resistance and comes with built-in curb guards and patented snow catcher.
- **Patented Snow Catcher** in the center section is designed to catch snow at the plow's pivot point – so no snow lines are left behind.
- **Reinforced Moldboard** increases blade rigidity for increased durability.
- **Heavy-Duty Push Frame And Center Section** for additional strength and reliability.
- **SmartLight 2** halogen light system for great visibility.

Plow shown with optional equipment.

- **High-Performance Hydraulic Package** delivers reliability and speed.
- **SmartLock Cylinders** keep blades straight when backdragging.
- **Enclosed Hydraulics** protects against corrosion and hydraulic freeze-up.
- **Chainless Hydraulic Cylinder Lifting System** greatly reduces bounce during transport and provides full float capability.
- **Two-Year Limited Warranty** protects against material defects for peace of mind.

### AVAILABLE UPGRADES:

- **SL3 Light System** best-in-class, 100% LED lighting spots obstacles before they're a problem.
- **NGE Pistol Grip Controller** our high-tech, ergonomic control features large, backlit buttons for ease of use.
- **NGE Control System** eliminates connector pins for a cleaner appearance, easier attachment and increased reliability.



8'2" Poly XT



SEE HOW BOSS CAN BACK YOU UP.  
**BOSSPLOW.COM**





## PROVEN TOUGHNESS IN A CLASSIC WORKHORSE

- > STANDARD-DUTY STEEL 7'6"
- > SUPER-DUTY STEEL 7'6", 8', 8'6", 9'
- > SUPER-DUTY POLY 7'6", 8'
- > SUPER-DUTY STAINLESS 8', 9'

Push back the chaos and restore order with BOSS Standard-Duty and Super-Duty Straight-Blade Plows. The durable Steel Straight-Blade features a baked-on powder-coat paint finish with epoxy-based primer to resist corrosion, and the super-slick polyethylene moldboard of the Poly Straight-Blade prevents snow from sticking. BOSS Super-Duty Straight-Blades are also available in high-grade, corrosion-resistant stainless steel. Every BOSS Straight-Blade features our heavy-duty push frame and quadrant, optimized blade curl and the reinforced moldboard, leading all other plows in reliability and strength.

### STANDARD FEATURES:

- > **Full Moldboard Trip Design** helps to prevent plow damage when an obstacle is encountered.
- > **Cast-Iron Plow Shoes** provide extended wear resistance compared to steel shoes.
- > **Blade Shock Absorber** stabilizes and cushions the trip return.
- > **Reinforced Moldboard** increases blade rigidity for increased durability (Super-Duty only).
- > **Heavy-Duty Push Frame and Quadrant** for additional strength and reliability.
- > **High-Performance Hydraulic Package** delivers reliability and speed.
- > **Enclosed Hydraulics** protects against corrosion and hydraulic freeze-up.
- > **Chainless Hydraulic Cylinder Lifting System** greatly reduces bounce during transport and provides full float capability.
- > **SmartLight 2** halogen light system for great visibility.
- > **Two-Year Limited Warranty** protects against material defects for peace of mind.

### AVAILABLE UPGRADES:

- > **SL3 Light System** best-in-class, 100% LED lighting spots obstacles before they're a problem.
- > **NGE Pistol Grip Controller** our high-tech, ergonomic control features large, backlit buttons for ease of use.
- > **NGE Control System** eliminates connector pins for a cleaner appearance, easier attachment and increased reliability.



7'6" Standard-Duty



8' Super-Duty

8' Super-Duty Stainless Steel



GET HELP SELECTING THE RIGHT BOSS PLOW FOR YOUR TRUCK.  
**BOSSPLOW.COM**

STANDARD FEATURES:







## INNOVATED FOR THE INEVITABLE

- > **STEEL 7'6", 8', 9'**  
**STEEL for skid steer 7'6", 8', 9'**
- > **STAINLESS STEEL 7'6", 8', 9'**  
**STAINLESS STEEL for skid steer 7'6", 8', 9'**

BOSS Trip-Edge Snowplows are engineered to power through the heaviest snow and any obstacles that come with it. The extra-rigid moldboard and trip-edge technology ensure that only the base angle trips when you hit an obstacle, so you won't lose the load you're pushing. Trip-Edge Snowplows feature four adjustable trip return springs, so you can customize the trip spring tension for the job at hand. Available in steel and stainless steel for both pickup truck and skid steer applications.



### STANDARD FEATURES:

- > **Trip-Edge Design** helps to prevent plow damage when an obstacle is encountered.
- > **Adjustable Trip Springs** allow you to customize the trip spring tension.
- > **Cast-Iron Plow Shoes** provide extended wear resistance compared to steel shoes.
- > **Reinforced Moldboard** increases blade rigidity for increased durability.
- > **Heavy-Duty Push Frame And Quadrant** for additional strength and reliability.
- > **High-Performance Hydraulic Package** delivers reliability and speed.
- > **Enclosed Hydraulics** protects against corrosion and hydraulic freeze-up (truck plows only).
- > **Chainless Hydraulic Cylinder Lifting System** greatly reduces bounce during transport and provides full float capability (truck plows only).
- > **SmartLight 2** halogen light system for great visibility (truck plows only).
- > **Two-Year Limited Warranty** protects against material defects for peace of mind.

### AVAILABLE UPGRADES:

- > **SL3 Light System** best-in-class, 100% LED lighting spots obstacles before they're a problem.
- > **NGE Pistol Grip Controller** our high-tech, ergonomic control features large, backlit buttons for ease of use.
- > **NGE Control System** eliminates connector pins for a cleaner appearance, easier attachment and increased reliability.



8' Super-Duty Trip-Edge Stainless Steel



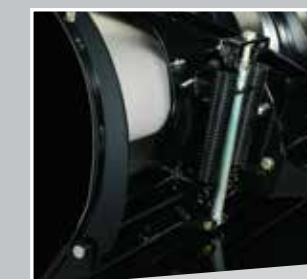
8' Super-Duty Trip-Edge Steel Skid Steer

### AVAILABLE FOR SKID STEERS, FEATURING:

- > **Universal Tool Carrier** is simple and fast to hook up; just drive in and connect the two hydraulic couplers (Skid Steer plows only).
- > **Adjustable Mounting Height** accommodates both track and wheel skid steer loaders (Skid Steer plows only).
- > **Built-In Side-To-Side Float** contours to what you're plowing (Skid Steer plows only).
- > **Two-Year Limited Warranty** protects against material defects for peace of mind.

Adjustable Trip Springs

Trip-Edge







# TOUGH PLOWS FOR HALF-TONS

- ▶ POLY & STEEL 7', 7'6"
- ▶ STAINLESS 7', 7'6"

New for 2015, BOSS has engineered a line of snowplows for today's half-ton, light-duty trucks with just the right amount of steel in exactly the right place for the best combination of weight and strength. The precisely crafted, ultra-efficient HTX is built to deliver the power and reliability you expect from BOSS, handling the biggest of jobs with your lighter duty truck. Because when it's on you to restore order, BOSS is always there to back you up.

### STANDARD FEATURES:

- ▶ **Full Moldboard Trip Design** helps to prevent plow damage when an obstacle is encountered.
- ▶ **Heavy-Duty Push Frame And Quadrant** for additional strength and reliability.
- ▶ **High-Performance Hydraulic Package** delivers reliability and speed.
- ▶ **Chainless Hydraulic Cylinder Lifting System** greatly reduces bounce during transport and provides full float capability.
- ▶ **Enclosed Hydraulics** protects against corrosion and hydraulic freeze-up.
- ▶ **SmartLight 2** halogen light system for great visibility.
- ▶ **Two-Year Limited Warranty** protects against material defects for peace of mind.

### AVAILABLE UPGRADES:

- ▶ **SL3 Light System** best-in-class, 100% LED lighting spots obstacles before they're a problem.
- ▶ **NGE Pistol Grip Controller** our high-tech, ergonomic control features large, backlit buttons for ease of use.
- ▶ **NGE Control System** eliminates connector pins for a cleaner appearance, easier attachment and increased reliability.

7'6" Stainless Steel HTX



7'6" Steel HTX



7'6" Poly HTX



SEE IT IN ACTION  
BOSSPLOW.COM

STANDARD FEATURES:





# MUNICIPAL SNOWPLOWS

> **HEAVY-DUTY STRAIGHT-BLADE STEEL 10' DXT STEEL 10'**

If you're looking for larger, municipal-grade plows, BOSS has what you want. Designed for medium-duty trucks, the BOSS Heavy-Duty Straight-Blade features a reinforced moldboard with enhanced blade curl to power through deep, wet snow, while the versatility of the dual-trip BOSS DXT allows you to scoop, stack and punch through hard-packed banks with power and performance. Because when it's on you to restore order, BOSS is always there to back you up.



- STANDARD FEATURES:**
- > **Dual-Trip Design** for enhanced plow protection when striking hidden obstacles (DXT only).
  - > **½" X 6" Base Angle** with built-in curb guards serves as the cutting edge until worn (DXT only).
  - > **Cast-Iron Plow Shoes** provide extended wear resistance compared to steel shoes (Optional on 10' DXT).
  - > **Full Moldboard Trip Design** helps to prevent plow damage when an obstacle is encountered (Straight-Blade only).
  - > **Dual Shock Absorbers** stabilize and cushion the trip action (Straight-Blade only).
  - > **Heavy-Duty Push Frame And Quadrant** for additional strength and reliability.
  - > **Reinforced Moldboard** increases blade rigidity for increased durability.
  - > **High-Performance Hydraulic Package** delivers reliability and speed.
  - > **Chainless Hydraulic Cylinder Lifting System** greatly reduces bounce during transport and provides full float capability.
  - > **Enclosed Hydraulics** protects against corrosion and hydraulic freeze-up.
  - > **SmartLight 2** halogen light system for great visibility.
  - > **Two-Year Limited Warranty** protects against material defects for peace of mind.
- AVAILABLE UPGRADES:**
- > **SL3 Light System** best-in-class, 100% LED lighting spots obstacles before they're a problem.
  - > **NGE Pistol Grip Controller** our high-tech, ergonomic control features large, backlit buttons for ease of use.
  - > **NGE Control System** eliminates connector pins for a cleaner appearance, easier attachment and increased reliability.



BOSS knows that the quality of a company starts with its employees. That's why they recruit only the best and most experienced talent around. For 30 years, this practice has enabled them to stay one step ahead of the competition with innovative, simple, elegant snowplow and ice-removal solutions. Because at BOSS, these core values are built on the premise that they will always be there to back you up.





# BOSS SNOWPLOW AUTHORIZED ACCESSORIES

## CONTROL OPTIONS



Attach it to a pedestal mount.



Mount it on your dash (with or without handle).



### MOUNTING OPTIONS

Attach the versatile SmartTouch 2 Handheld Control to a pedestal mount or mount it on your dash (with or without handle).

PEDESTAL MOUNT .....	MSC09658
DASHBOARD MOUNT .....	MSC09660

## ATTACHMENT SYSTEMS



Attach your plow in just three easy steps with the industry's easiest-to-use snowplow attachment system.

.....MSC04679



### NGE PISTOL GRIP

The new Pistol Grip Controller features a unique ergonomic design, with a thumb controlled joystick and trigger finger raise and lower buttons for ease of use even during the longest snow events. One controller can be used for Straight and V-Plows. Available only with Next Generation Electrical system. Talk to your BOSS Dealer today.

NGE PISTOL GRIP .....	MSC17819
-----------------------	----------

### JOYSTICK CONTROL

If you prefer the feel of a joystick, opt for this versatile accessory, featuring a lighted on/off switch and right- or left-hand adjustment.

STRAIGHT-BLADES .....	STB03191
POWER-V .....	MSC03809



### SNOWPLOW SIGHT SYSTEM

Optional for all BOSS snowplows featuring the SmartLight2 lighting system, our exclusive Snowplow Sight System allows you to align your truck and plow from inside your cab for hookups on the first try, every time. Making the fastest plow attachment system even faster and easier.

.....	MSC09644
-------	----------



## BLADE ENHANCEMENT

### PLOW WINGS

Increasing your blade width by a full 22" at a 30-degree angle, these convenient poly plow wings will cut your plowing time and attach and detach within seconds (excludes Sport-Duty and Municipal Plows).

**STRAIGHT-BLADE .....** MSC08042C  
**XT AND DXT PLOWS .....** MSC08063B  
 (Excludes Sport-Duty plows & 10' plows. The only Power-V DXT models recommended for plow wing extensions are the 8'2" Steel DXT and 8'2" Poly DXT. Wing extensions do fit other DXT sizes and do not void the warranty but are not recommended, as the blade may sag when in the scoop position, due to the weight of the wing extensions.)



### HIGH-PERFORMANCE POWER-V CUTTING EDGE

Featuring built-in curb guards and patented snow catcher, our patented Power-V cutting edge is made of HARDOX® that delivers extended wear resistance compared to conventional cutting edges.

7'6" DRIVER SIDE .....	BAL08857
7'6" PASSENGER SIDE .....	BAR08856
8'2" DRIVER SIDE .....	BAL08859
8'2" PASSENGER SIDE .....	BAR08858
9'2" DRIVER SIDE .....	BAL08861
9'2" PASSENGER SIDE .....	BAR08860
10' DRIVER SIDE .....	BAL08863
10' PASSENGER SIDE .....	BAR08862
10' DXT DRIVER SIDE .....	BAL17580
10' DXT PASSENGER SIDE .....	BAR17590

### CURB GUARDS

Protect the edge of your plow with these long-lasting, high-impact curb guards. Fits all BOSS Power-V and Straight-Blade snowplow models (except HTX and Sport-Duty).

STRAIGHT-BLADE DRIVER SIDE .....	STB03395
STRAIGHT-BLADE PASSENGER SIDE .....	STB03394
STRAIGHT-BLADE XT DRIVER SIDE .....	STB00315
STRAIGHT-BLADE XT PASSENGER SIDE .....	STB00313
POWER-V DRIVER SIDE .....	BAL00898
POWER-V PASSENGER SIDE .....	BAR00498
STRAIGHT-BLADE 10' DRIVER SIDE .....	STB04364
STRAIGHT-BLADE 10' PASSENGER SIDE .....	STB04363

### RUBBER SNOW DEFLECTOR

For increased visibility and safety, keep blowing snow off your windshield with a rugged snow deflector specifically designed for BOSS snowplows.

7' and 7'6" HTX/Sport-Duty and 7'6" Standard-Duty Straight-Blade Plows (MSC04587)  
 Power-V and Straight-Blade Plows (MSC01565)  
 10' Power-V DXT and Straight-Blade (MSC17611)





## BLADE ENHANCEMENT

### URETHANE CUTTING EDGE

BOSS now offers a full line of Urethane Cutting Edges to cover our entire line of Straight-Blade Plows. Ranging from 7' all the way up to 10', the edges offer between 1" to 2" of material thickness based on blade application and are reversible with a built-in bevel for optimum scraping performance. All necessary mounting hardware is included in the kit.

7' X 6" X 1" HTX/SPORT-DUTY STRAIGHT-BLADE (7')	.....STB09231
7'6" X 6" X 1" HTX/SPORT-DUTY STRAIGHT-BLADE (7'6")	.....STB09232
7'6" X 8" X 1½" STD AND SUPER-DUTY STRAIGHT-BLADE (7'6")	.....STB09233
8' X 8" X 1½" SUPER-DUTY STRAIGHT-BLADE (8')	.....STB09234
8'6" X 8" X 1½" SUPER-DUTY STRAIGHT-BLADE (8'6")	.....STB09235
9' X 8" X 1½" SUPER-DUTY STRAIGHT-BLADE (9')	.....STB09236
10' X 8" X 2" HEAVY-DUTY STRAIGHT-BLADE (10')	.....STB09237



## WALK BEHIND PUSH SPREADERS

### BROADCAST WALK BEHIND SPREADER

Spread up to 70 pounds of material easily with the BOSS Broadcast Spreader. Included are an adjustable chute, weather cover and ergonomic handle.

#### Broadcast Walk Behind Spreader (WBS15800B)

- 70 lb capacity
- Spreads dry, free flowing salt and deicers
- Adjustable chute for pattern control
- Weather Cover
- Gear Cover – limited lifetime gear warranty
- Ergonomic handle
- 13" pneumatic tires



### DROP DOWN SPREADER

Spread up to 100 lb of material easily with the BOSS Drop Down Spreader. Included are a spring loaded on/off system, split axle for independent agitation and ergonomic handle.

#### Drop Down Spreader (WBS15900)

- 100 lb capacity
- Spreads dry, free flowing salt and deicers
- Spring loaded on/off
- Split axle with independent agitation
- Ergonomic handle
- 13" pneumatic tires



## MAINTENANCE

### TOUCH-UP PAINT

Cover chips and scrapes the professional way.

RED, SPRAY PAINT	.....MSC04098
BLACK, SPRAY PAINT	.....MSC04036
RED, QUART	.....MSC04358

### HIGH-PERFORMANCE HYDRAULIC FLUID

Specially formulated to maintain its viscosity from normal use to as low as -40°F.

GALLON	.....HYD01836
QUART	.....HYD01835

### EMERGENCY PARTS KITS

These kits feature the most useful replacement parts — packaged in a convenient soft-sided case that fits easily behind the seat of your truck.

V-PLOW EMERGENCY PARTS KIT	.....MSC04298
STRAIGHT-BLADE EMERGENCY PARTS KIT	.....STB16187



## STABILITY & PERFORMANCE

### REPLACEMENT BUMPER TRIM KIT

This kit eliminates the need to cut or modify a portion of the OEM bumper to access the push beam's hooks. The kits utilize the factory mounting holes and give the plow vehicle an attractive, finished OEM look when installed. If the truck is going to be sold, the original bumper piece can be reinstalled to look like new. The lowest portion of the bumper, the valence, must be removed or trimmed.

BUMPER TRIM KIT, 2014 + CHEVY 1500	.....MSC09409
BUMPER TRIM KIT, 2015 + CHEVY 2500/3500	.....MSC09279
BUMPER TRIM KIT, 2014 + GMC 1500	.....MSC09290
BUMPER TRIM KIT, 2015 + GMC 2500/3500	.....MSC09295

### SMARTLOCK® CYLINDERS

Keep your Power-V Plow locked securely in the straight-position while backdragging, with these easy-to-install locking cylinders.

PRE-2006 POWER-V PLOWS	.....HYD07130
2006 & NEWER POWER-V PLOWS	.....HYD09733
2006 & NEWER 10' POWER-V AND 10' DXT PLOWS	.....HYD09386



### CAST-IRON PLOW SHOES

These ultra-rugged cast-iron shoes deliver extended wear resistance compared to conventional steel shoes.

PLOW SHOE ASSEMBLY*	.....MSC01570
SPORT-DUTY PLOW SHOE BRACKET OPTION KIT (SHOES INCLUDED)	.....MSC09588
TRIP-EDGE PLOW SHOE ASSEMBLY	.....TRP07880
DXT PLOW SHOE BRACKET OPTION KIT (SHOES NOT INCLUDED)	.....MSC18207

\*DXT and HTX blades now include Plow Shoe Brackets as standard. Shoes not included in Plow Box.



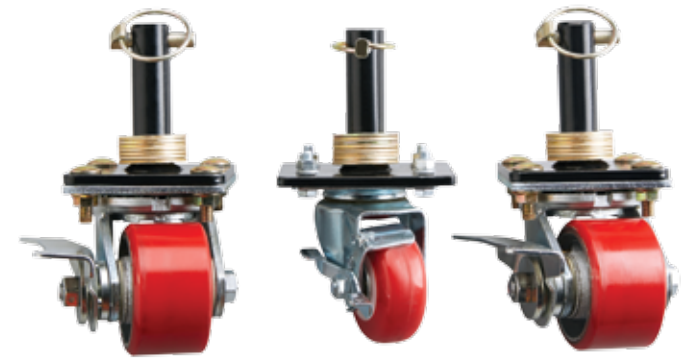
Trip-Edge Shoe Kit

### DOLLY WHEELS

Ideal for moving your plow around in the garage or service bay, these dolly wheels utilize existing shoe holders on the blade and make moving the plow a breeze. These heavy-duty wheels feature steel ball bearings for smooth movement and long-lasting life. Separate kits are available for Straight-Blades and Power-V Blades. Excludes: DXT, Trip-Edge Straight-Blade, Skid Steer and 10' Straight-Blade plows.

CASTER KIT, STRAIGHT-BLADE	.....MSC09215
CASTER KIT, V-BLADE	.....MSC09216
CASTER KIT, HTX/SPORT-DUTY STRAIGHT BLADE (COVERS 7', 7'6", HTX/SPORT-DUTY STB)	.....MSC09249

\*\*Dolly wheel color may vary.



V-Blade Dolly Wheel Kit\*\*

### BALLAST RETAINER KIT

Use the ballast retainer kit to hold sandbags securely in place in order to provide enhanced performance.

.....	.....MSC09845
-------	---------------





# WHAT YOU GET WHEN YOU BUY A BOSS PLOW.\*



**1** **+ BLADE**  
Steel, stainless, poly, whatever you choose, it's durable and reliable.

**2** **+ PLOW LIGHTS**  
SmartLights provide outstanding light output for increased visibility.

**3** **+ PUSH FRAME/COUPLER**  
The powerful reinforced steel framework behind your plow.

**4** **+ UNDERCARRIAGE**  
Serves as the connection point for the plow to the truck.

**5** **+ WIRING & CONTROLLER**  
An intuitive, easy-to-use system completely protected from the elements.

**6** **+ ATTACHMENT SYSTEM**  
A three-step, fully hydraulic system for quick and easy attachment.

**7** **+ CUTTING EDGE OR BASE ANGLE**  
A durable cutting edge designed for precision and performance. Trip-edge plows are sold with a base angle only. Base angle serves as the cutting edge until worn.

**8** **+ WORLD-CLASS SUPPORT**  
From distributors and customer service to our Owners Group, BOSS backs you up.

\*The above equipment applies to brand-new plow purchases that require all components.

## PERSONAL-USE PLOWS

VEHICLE APPLICATION: **DOWNSIZE 4X4s, 1/2-TON TRUCKS AND SUVs**

**HTX STRAIGHT-BLADE**

SPECIFICATIONS	7' Steel / Poly / Stainless HTX	7'6" Steel / Poly / Stainless HTX
Blade Width (Straight)	84" (213 cm)	90" (229 cm)
Plowing Width @ 30° Angle	73" (185 cm)	78" (198 cm)
Blade Height	26" (66 cm)	26" (66 cm)
Blade Thickness	14-ga (0.19 cm) Mild Steel / 3/8" (0.6 cm) Poly / 14-ga (0.19 cm) Stainless Steel	14-ga (0.19 cm) Mild Steel / 3/8" (0.6 cm) Poly / 14-ga (0.19 cm) Stainless Steel
Cutting Edge	3/8" x 6" (0.6 cm x 15 cm)	3/8" x 6" (1 cm x 15 cm)
Reinforcement Ribs	4 vertical, 2 diagonal	6 vertical, 2 diagonal
Plow Shoes	Optional	Optional
Trip Springs	2	2
Angle Cylinders	1 1/2" x 6 1/2" (4 cm x 17 cm)	1 1/2" x 6 1/2" (4 cm x 17 cm)
Lift Cylinder	1 3/4" x 1 1/8" x 10" (5 cm x 3 cm x 25 cm)	1 3/4" x 1 1/8" x 10" (5 cm x 3 cm x 25 cm)
Shock Absorber	N/A	N/A
Attachment System	SmartHitch 2	SmartHitch 2
Plow Weight*	393 lb* (178 kg) / 367 lb* (166 kg) / 393 lb* (178 kg)	440 lb* (200 kg) / 416 lb* (188 kg) / 440 lb* (200 kg)
Plow Lights	SmartLight 2	SmartLight 2

\*Plow weight does not include vehicle mount weight. †Vehicle mount weight range: 45-75 lb (20-34 kg).

VEHICLE APPLICATION: **4X4s, 1/2 AND 3/4-TON TRUCKS AND SUVs**

**STANDARD-DUTY STRAIGHT-BLADE**

SPECIFICATIONS	7'6" Standard-Duty Steel
Blade Width (Straight)	90" (229 cm)
Plowing Width @ 30° Angle	78" (198 cm)
Blade Height	27 1/2" (70 cm)
Blade Thickness	14-ga high-strength Steel
Cutting Edge	3/8" x 6" (1 cm x 15 cm)
Reinforcement Ribs	7 vertical
Plow Shoes	Cast iron
Trip Springs	3
Angle Cylinders	1 1/2" x 10" (4 cm x 25 cm)
Lift Cylinder	2" x 1 1/8" x 10" (5 cm x 3 cm x 25 cm)
Shock Absorber	1
Attachment System	SmartHitch 2
Plow Weight*	597 lb* (271 kg)
Plow Lights	SmartLight 2

\*Plow weight does not include vehicle mount weight. †Vehicle mount weight range: 75-105 lb (34-47 kg).

### TWO-YEAR LIMITED WARRANTY

ALL BOSS SNOWPLOWS AND EQUIPMENT ARE GUARANTEED TO BE FREE FROM DEFECTS IN MATERIAL AND WORKMANSHIP FOR TWO FULL YEARS FROM THE DATE OF PURCHASE. STOP BY ANY AUTHORIZED BOSS DEALER TO RECEIVE COMPLETE DETAILS ON OUR TWO-YEAR PARTS AND LABOR WARRANTY. PLEASE VISIT BOSSPLOW.COM FOR MORE DETAILS.

### LEGAL STATEMENT

VEHICLES INTENDED TO BE EQUIPPED WITH A SPREADER AND/OR SNOWPLOW MUST COMPLY WITH THE VEHICLE MANUFACTURERS' SPECIFICATIONS FOR EQUIPMENT APPLICATION. BOSS PRODUCTS RESERVES THE RIGHT UNDER ITS PRODUCT IMPROVEMENT POLICY TO CHANGE CONSTRUCTION OR DESIGN DETAILS AND FURNISH EQUIPMENT WHEN SO ALTERED WITHOUT REFERENCE TO ILLUSTRATIONS OR SPECIFICATIONS USED HEREIN. BOSS PRODUCTS MAY BE PROTECTED BY ONE OR MORE PATENTS; PLEASE SEE BOSSPLOW.COM FOR MORE DETAILS.



# PROFESSIONAL-USE PLOWS

## VEHICLE APPLICATION: 4X4s, ½ TO 1-TON TRUCKS AND SUVs

### SUPER-DUTY STRAIGHT-BLADE

SPECIFICATIONS	7'6" Super-Duty Steel	8' Super-Duty Steel	8'6" Super-Duty Steel	9' Super-Duty Steel*
Blade Width (Straight)	90" (229 cm)	96" (244 cm)	102" (259 cm)	108" (274 cm)
Plowing Width @ 30° Angle	78" (198 cm)	83" (211 cm)	88" (224 cm)	93½" (238 cm)
Blade Height	29" (74 cm)	29" (74 cm)	29" (74 cm)	29" (74 cm)
Blade Thickness	11-ga Steel	11-ga Steel	11-ga Steel	11-ga Steel
Cutting Edge	½" x 6" (1.3 cm x 15 cm)	½" x 6" (1.3 cm x 15 cm)	½" x 6" (1.3 cm x 15 cm)	½" x 6" (1.3 cm x 15 cm)
Reinforcement Ribs	7 vertical, 2 diagonal	7 vertical, 2 diagonal	7 vertical, 2 diagonal	7 vertical, 2 diagonal
Plow Shoes	Cast iron	Cast iron	Cast iron	Cast iron
Trip Springs	4	4	4	4
Angle Cylinders	1½" x 10" (4 cm x 25 cm)	1½" x 10" (4 cm x 25 cm)	1½" x 10" (4 cm x 25 cm)	1½" x 10" (4 cm x 25 cm)
Lift Cylinder	2" x 1½" x 10" (5 cm x 3 cm x 25 cm)	2" x 1½" x 10" (5 cm x 3 cm x 25 cm)	2" x 1½" x 10" (5 cm x 3 cm x 25 cm)	2" x 1½" x 10" (5 cm x 3 cm x 25 cm)
Shock Absorber	1	1	1	1
Attachment System	SmartHitch 2	SmartHitch 2	SmartHitch 2	SmartHitch 2
Plow Weight*	680 lb <sup>B</sup> (308 kg)	698 lb <sup>B</sup> (317 kg)	720 lb <sup>B</sup> (327 kg)	742 lb <sup>B</sup> (337 kg)
Plow Lights	SmartLight 2	SmartLight 2	SmartLight 2	SmartLight 2

SPECIFICATIONS	7'6" Super-Duty Poly	8' Super-Duty Poly	8' Super-Duty Stainless	9' Super-Duty Stainless
Blade Width (Straight)	90" (229 cm)	96" (244 cm)	96" (244 cm)	108" (274 cm)
Plowing Width @ 30° Angle	78" (198 cm)	83" (211 cm)	83" (224 cm)	93½" (238 cm)
Blade Height	29" (74 cm)	29" (74 cm)	29" (74 cm)	29" (74 cm)
Blade Thickness	¾" (1 cm) Poly	¾" (1 cm) Poly	14-ga 304 Stainless	14-ga 304 Stainless
Cutting Edge	½" x 6" (1.3 cm x 15 cm)	½" x 6" (1.3 cm x 15 cm)	½" x 6" (1.3 cm x 15 cm)	½" x 6" (1.3 cm x 15 cm)
Reinforcement Ribs	7 vertical, 2 diagonal	7 vertical, 2 diagonal	7 vertical, 2 diagonal	7 vertical, 2 diagonal
Plow Shoes	Cast iron	Cast iron	Cast iron	Cast iron
Trip Springs	4	4	4	4
Angle Cylinders	1½" x 10" (4 cm x 25 cm)	1½" x 10" (4 cm x 25 cm)	1½" x 10" (4 cm x 25 cm)	1½" x 10" (4 cm x 25 cm)
Lift Cylinder	2" x 1½" x 10" (5 cm x 3 cm x 25 cm)	2" x 1½" x 10" (5 cm x 3 cm x 25 cm)	2" x 1½" x 10" (5 cm x 3 cm x 25 cm)	2" x 1½" x 10" (5 cm x 3 cm x 25 cm)
Shock Absorber	1	1	1	1
Attachment System	SmartHitch 2	SmartHitch 2	SmartHitch 2	SmartHitch 2
Plow Weight*	706 lb <sup>B</sup> (320 kg)	722 lb <sup>B</sup> (328 kg)	747 lb <sup>B</sup> (339 kg)	794 lb <sup>B</sup> (360 kg)
Plow Lights	SmartLight 2	SmartLight 2	SmartLight 2	SmartLight 2

\*Plow weight does not include vehicle mount weight. <sup>B</sup>Vehicle mount weight range: 75-105 lb (34-48 kg).

## VEHICLE APPLICATION: ½ TO 1-TON TRUCKS, SUVs AND SKID STEERS

### TRIP-EDGE SUPER-DUTY STRAIGHT-BLADE

SPECIFICATIONS	7'6" Trip-Edge Steel/Skid Steer	8' Trip-Edge Steel/Skid Steer	9' Trip-Edge Steel/Skid Steer*	7'6" Trip-Edge Stainless/Skid Steer	8' Trip-Edge Stainless/Skid Steer	9' Trip-Edge Stainless/Skid Steer
Blade Width (Straight)	90" (229 cm)	96" (244 cm)	108" (274 cm)	90" (229 cm)	96" (244 cm)	108" (274 cm)
Plowing Width @ 30° Angle	78" (198 cm)	83" (211 cm)	93½" (238 cm)	78" (198 cm)	83" (211 cm)	93½" (238 cm)
Blade Height	31" (79 cm)	31" (79 cm)	31" (79 cm)	31" (79 cm)	31" (79 cm)	31" (79 cm)
Blade Thickness	11-ga Steel	11-ga Steel	11-ga Steel	14-ga 304 Stainless	14-ga 304 Stainless	14-ga 304 Stainless
Base Angle	½" x 6" x 3½" (1.3 cm x 15 cm x 9 cm)	½" x 6" x 3½" (1.3 cm x 15 cm x 9 cm)	½" x 6" x 3½" (1.3 cm x 15 cm x 9 cm)	½" x 6" x 3½" (1.3 cm x 15 cm x 9 cm)	½" x 6" x 3½" (1.3 cm x 15 cm x 9 cm)	½" x 6" x 3½" (1.3 cm x 15 cm x 9 cm)
Cutting Edge (optional)	½" x 6" (1.3 cm x 15 cm)	½" x 6" (1.3 cm x 15 cm)	½" x 6" (1.3 cm x 15 cm)	½" x 6" (1.3 cm x 15 cm)	½" x 6" (1.3 cm x 15 cm)	½" x 6" (1.3 cm x 15 cm)
Reinforcement Ribs	6 vertical, 2 diagonal	6 vertical, 2 diagonal	8 vertical, 2 diagonal	6 vertical, 2 diagonal	6 vertical, 2 diagonal	8 vertical, 2 diagonal
Plow Shoes	Cast iron	Cast iron	Cast iron	Cast iron	Cast iron	Cast iron
Trip Springs	4	4	4	4	4	4
Trip Pivot Pin Diameter	1" (3 cm)	1" (3 cm)	1" (3 cm)	1" (3 cm)	1" (3 cm)	1" (3 cm)
Trip Spring Type	¾" (1 cm) hooked extension spring	¾" (1 cm) hooked extension spring	¾" (1 cm) hooked extension spring	¾" (1 cm) hooked extension spring	¾" (1 cm) hooked extension spring	¾" (1 cm) hooked extension spring
Trip-Edge Adjustable	Standard	Standard	Standard	Standard	Standard	Standard
Angle Cylinders	1½" x 10" (4 cm x 25 cm)	1½" x 10" (4 cm x 25 cm)	1½" x 10" (4 cm x 25 cm)	1½" x 10" (4 cm x 25 cm)	1½" x 10" (4 cm x 25 cm)	1½" x 10" (4 cm x 25 cm)
Lift Cylinder	2" x 1½" x 10" (5 cm x 3 cm x 25 cm)	2" x 1½" x 10" (5 cm x 3 cm x 25 cm)	2" x 1½" x 10" (5 cm x 3 cm x 25 cm)	2" x 1½" x 10" (5 cm x 3 cm x 25 cm)	2" x 1½" x 10" (5 cm x 3 cm x 25 cm)	2" x 1½" x 10" (5 cm x 3 cm x 25 cm)
Attachment System	SmartHitch 2 / Universal tool carrier	SmartHitch 2 / Universal tool carrier	SmartHitch 2 / Universal tool carrier	SmartHitch 2 / Universal tool carrier	SmartHitch 2 / Universal tool carrier	SmartHitch 2 / Universal tool carrier
Plow Weight*	772 lb <sup>B</sup> (350 kg) / 798 lb <sup>B</sup> (362 kg)	788 lb <sup>B</sup> (357 kg) / 809 lb <sup>B</sup> (367 kg)	828 lb <sup>B</sup> (376 kg) / 857 lb <sup>B</sup> (389 kg)	831 lb <sup>B</sup> (377 kg) / 826 lb <sup>B</sup> (375 kg)	849 lb <sup>B</sup> (385 kg) / 836 lb <sup>B</sup> (379 kg)	897 lb <sup>B</sup> (407 kg) / 888 lb <sup>B</sup> (403 kg)
Plow Lights	SmartLight 2/NA	SmartLight 2/NA	SmartLight 2/NA	SmartLight 2/NA	SmartLight 2/NA	SmartLight 2/NA

\*Plow weight does not include vehicle mount weight.

<sup>B</sup>Vehicle mount weight range: 75-105 lb (34-48 kg).

\*\*Includes 1-ton trucks with dual rear wheels.

## VEHICLE APPLICATION: 4X4s, ¾ AND 1-TON TRUCKS AND SUVs

### XT

SPECIFICATIONS	7'6" XT Steel	8'2" XT Steel	9'2" XT Steel**	8'2" XT Poly	9'2" XT Poly**
Blade Width (Straight)	90" (229 cm)	98" (249 cm)	110" (279 cm)	98" (249 cm)	110" (279 cm)
Plowing Width (V position)	81" (206 cm)	88" (224 cm)	99" (252 cm)	88" (224 cm)	99" (252 cm)
Plowing Width (Scoop)	74" (188 cm)	81" (206 cm)	92" (234 cm)	81" (206 cm)	92" (234 cm)
Plowing Width @ 30° Angle	77" (196 cm)	85" (216 cm)	95" (241 cm)	85" (216 cm)	95" (241 cm)
Blade Height	36" (91 cm) at end, 30" (76 cm) at center	37" (94 cm) at end, 30" (76 cm) at center	38" (96.52 cm) at end, 30" (76 cm) at center	37" (94 cm) at end, 30" (76 cm) at center	38" (96.52 cm) at end, 30" (76 cm) at center
Blade Thickness	14-ga Steel	11-ga Steel	11-ga Steel	¾" (1 cm) Poly	¾" (1 cm) Poly
Cutting Edge (high-performance)	½" x 6" (1.3 cm x 15 cm)	½" x 6" (1.3 cm x 15 cm)	½" x 6" (1.3 cm x 15 cm)	½" x 6" (1.3 cm x 15 cm)	½" x 6" (1.3 cm x 15 cm)
Reinforcement Ribs	6 vertical, 2 diagonal	6 vertical, 2 diagonal	8 vertical, 2 diagonal	6 vertical, 2 diagonal	8 vertical, 2 diagonal
Plow Shoes	Optional	Optional	Optional	Optional	Optional
Trip Springs	4	4	4	4	4
SmartLock Cylinders	1½" x 10" (4 cm x 25 cm)	1½" x 10" (4 cm x 25 cm)	1½" x 10" (4 cm x 25 cm)	1½" x 10" (4 cm x 25 cm)	1½" x 10" (4 cm x 25 cm)
Lift Cylinder	2" x 1½" x 10" (5 cm x 3 cm x 25 cm)	2" x 1½" x 10" (5 cm x 3 cm x 25 cm)	2" x 1½" x 10" (5 cm x 3 cm x 25 cm)	2" x 1½" x 10" (5 cm x 3 cm x 25 cm)	2" x 1½" x 10" (5 cm x 3 cm x 25 cm)
Attachment System	SmartHitch 2	SmartHitch 2	SmartHitch 2	SmartHitch 2	SmartHitch 2
Plow Weight*	713 lb <sup>B</sup> (323 kg)	785 lb <sup>B</sup> (356 kg)	842 lb <sup>B</sup> (382 kg)	795 lb <sup>B</sup> (361 kg)	852 lb <sup>B</sup> (387 kg)
Plow Lights	SmartLight 2	SmartLight 2	SmartLight 2	SmartLight 2	SmartLight 2

\*Plow weight does not include vehicle mount weight. <sup>B</sup>Vehicle mount weight range: 75-105 lb (34-48 kg).

\*\*Includes 1-ton trucks with dual rear wheels.

## VEHICLE APPLICATION: 4X4s, ¾ AND 1-TON TRUCKS AND SUVs, MEDIUM-DUTY TRUCKS 14,000-27,000 GVWR (10' ONLY)

### DXT

SPECIFICATIONS	8'2" Steel / Poly / Stainless DXT	9'2" Steel / Poly / Stainless DXT	10' Steel Heavy-Duty DXT
Blade Width (Straight)	98" (249 cm)	110" (279 cm)	120" (305 cm)
Blade Width (V)	88" (224 cm)	99" (251 cm)	107" (272 cm)
Blade Width (Scoop)	81" (206 cm)	92" (234 cm)	102" (259 cm)
Plowing Width @ 30° Angle	85" (216 cm)	95" (241 cm)	104" (264 cm)
Blade Height	30" (76 cm) at center, 37½" (95 cm) at end	30" (76 cm) at center, 38½" (98 cm) at end	35" (88 cm) at center, 45" (114 cm) at end
Blade Thickness	11-ga Steel / 3/8" Poly / 12-ga 304 Stainless Steel	11-ga Steel / 3/8" Poly / 12-ga 304 Stainless Steel	11-ga Steel
Base Angle	**½" x 6" (1.3 cm x 15 cm)	**½" x 6" (1.3 cm x 15 cm)	½" x 6" (1.3 cm x 15 cm)
Reinforcement Ribs	6 vertical, 2 diagonal	8 vertical, 2 diagonal	8 vertical, 2 diagonal
Plow Shoes	Optional	Optional	Optional
Trip Springs (Moldboard)	4 Extension Springs	4 Extension Springs	4 Extension Springs
Trip Springs (Cutting Edge)	3 Torsion Springs (per blade half)	3 Torsion Springs (per blade half)	3 Torsion Springs (per blade half)
Angle Cylinders	1½" x 10" (4 cm x 25 cm)	1½" x 10" (4 cm x 25 cm)	2" x 10" (5.08 cm x 25.4 cm)
Lift Cylinder	2" x 1½" x 10" (5 cm x 3 cm x 25 cm)	2" x 1½" x 10" (5 cm x 3 cm x 25 cm)	2¼" x 1½" x 12" (5.72 cm x 2.86 cm x 30.48 cm)
Attachment System	SmartHitch 2	SmartHitch 2	SmartHitch 2
Plow Weight*	868 lb <sup>B</sup> (394 kg) / 878 lb <sup>B</sup> (398 kg) / 920 lb <sup>B</sup> (417 kg)	925 lb <sup>B</sup> (420 kg) / 935 lb <sup>B</sup> (424 kg) / 977 lb <sup>B</sup> (433 kg)	1205 lb <sup>B</sup> (547 kg)
Plow Lights	SmartLight 2	SmartLight 2	SmartLight 2

\*Plow weight does not include vehicle mount weight.

<sup>B</sup>Vehicle mount weight range: 130-160 lb (59-73 kg).

\*\*The tripping base angles on the DXT come standard with curb guards and patented snow catcher, and can be used as the cutting edge until worn. The optional cutting edge is made from HARDOX<sup>®</sup> for maximum wear resistance and durability.

# MUNICIPAL-USE PLOWS

## VEHICLE APPLICATION: MEDIUM-DUTY TRUCKS 14,000-27,000 GVWR

### HEAVY-DUTY STRAIGHT-BLADE

#### 10' DXT (SPECIFICATIONS LISTED ABOVE)

SPECIFICATIONS	10' Heavy-Duty Straight-Blade
Blade Width (Straight)	120" (305 cm)
Plowing Width @ 30° Angle	104" (264 cm)
Blade Height	34½" (88 cm)
Blade Thickness	7-ga Steel
Cutting Edge	½" x 6" (1.3 cm x 15 cm)
Reinforcement Ribs	8 vertical, 2 diagonal
Plow Shoes	Cast iron
Trip Springs	6
Angle Cylinders	2" x 10" (5 cm x 25 cm)
Lift Cylinder	2¼" x 1½" x 12" (6 cm x 3 cm x 31 cm)
Shock Absorber	2
Attachment System	SmartHitch 2
Plow Weight*	1205 lb <sup>B</sup> (547 kg)
Plow Lights	SmartLight 2

\*Plow weight does not include vehicle mount weight.

<sup>B</sup>Vehicle mount weight range: 130-160 lb (59-73 kg).



# GIVING YOU EVERYTHING YOU NEED TO RESTORE ORDER

ASK YOUR BOSS DEALER OR VISIT [BOSSPLOW.COM](http://BOSSPLOW.COM)  
TO EXPLORE THE WHOLE BOSS FAMILY.

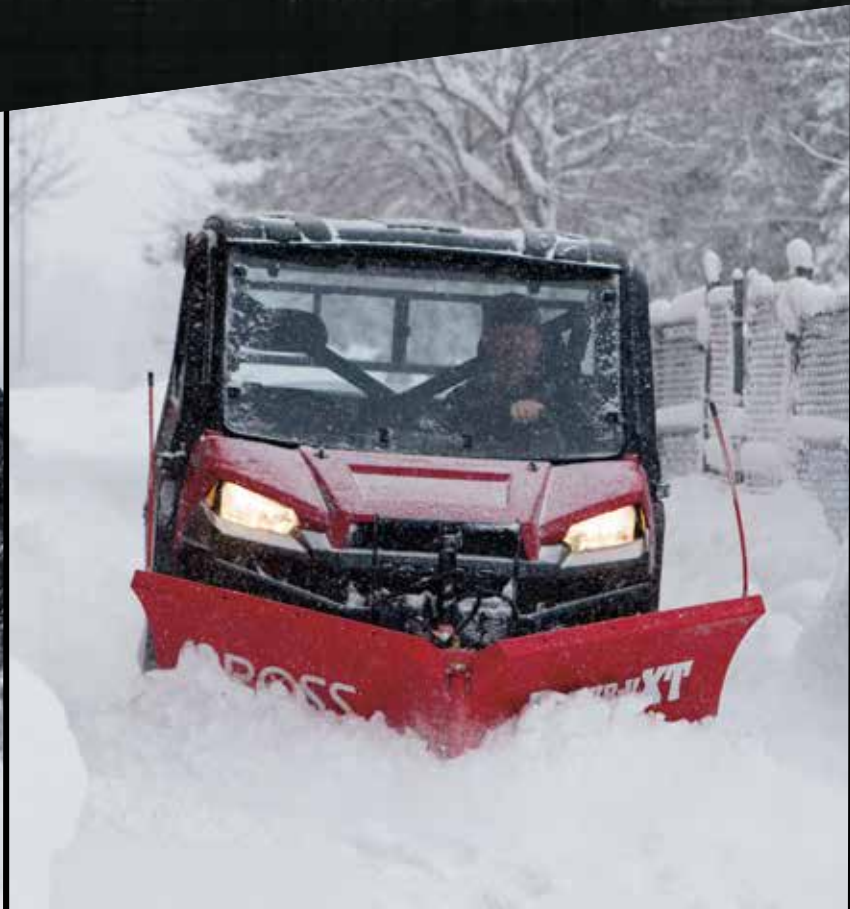
GET ZERO DOWN  
NO PAYMENTS  
AND NO INTEREST  
FOR 6 MONTHS\*



\*Commercial Use Customers Only. Ask your BOSS Dealer or visit [bossplow.com/financing](http://bossplow.com/financing) for more details.



ATV  
SNOWPLOWS



UTV  
SNOWPLOWS



BOX  
PLOWS



SPREADERS



# GET CONNECTED WITH BOSS

## JOIN THE BOSS FAMILY



You are a BOSS Snowplow Owner, and when the snow starts falling, we know you need to move at the speed of the storm. We also know that having a community to share stories about your equipment, communicating with the BOSS team and connecting with other snowplow professionals is important to you. That's why we developed the official BOSS OWNERS GROUP community.

This community is exclusive to BOSS Owners. When you join, you get your own BOSS profile page and access to special offers, new product announcements, and information on BOSS products and services. New members also receive a free welcome gift for joining. This is your community. You are part of the BOSS Family, and it is our promise that we're always here to back you up.

Join today at [bossplow.com/owners](http://bossplow.com/owners)

## BACK UP OUR NATION'S HEROES



When it comes to having our back, nothing compares to the men and women of the Armed Forces. SnowCare for Troops is a nationwide outreach program that recruits local volunteers to provide free snow-removal services at home for the men and women serving overseas, as well as disabled veterans. Since 2008, BOSS and hundreds of volunteers have helped more than 1,000 families. Enlisting is easy and helps take some of the burden off of those serving so far away. After all, they're protecting our freedom — plowing their driveways is the least we can do.

Enlist at [bossplow.com/snowcarefortroops](http://bossplow.com/snowcarefortroops)



Plow shown with optional equipment.